

Pigeon Lake Watershed Management Plan

Healthy Watershed – Healthy Lake – Healthy Communities

2013 ALMS WORKSHOP

September 26, 2013 –
Robert (Bob) Gibbs PLWA Director

Watershed Stewardship Group Approach to
Watershed Management Planning



RBC
Blue Water
Project™

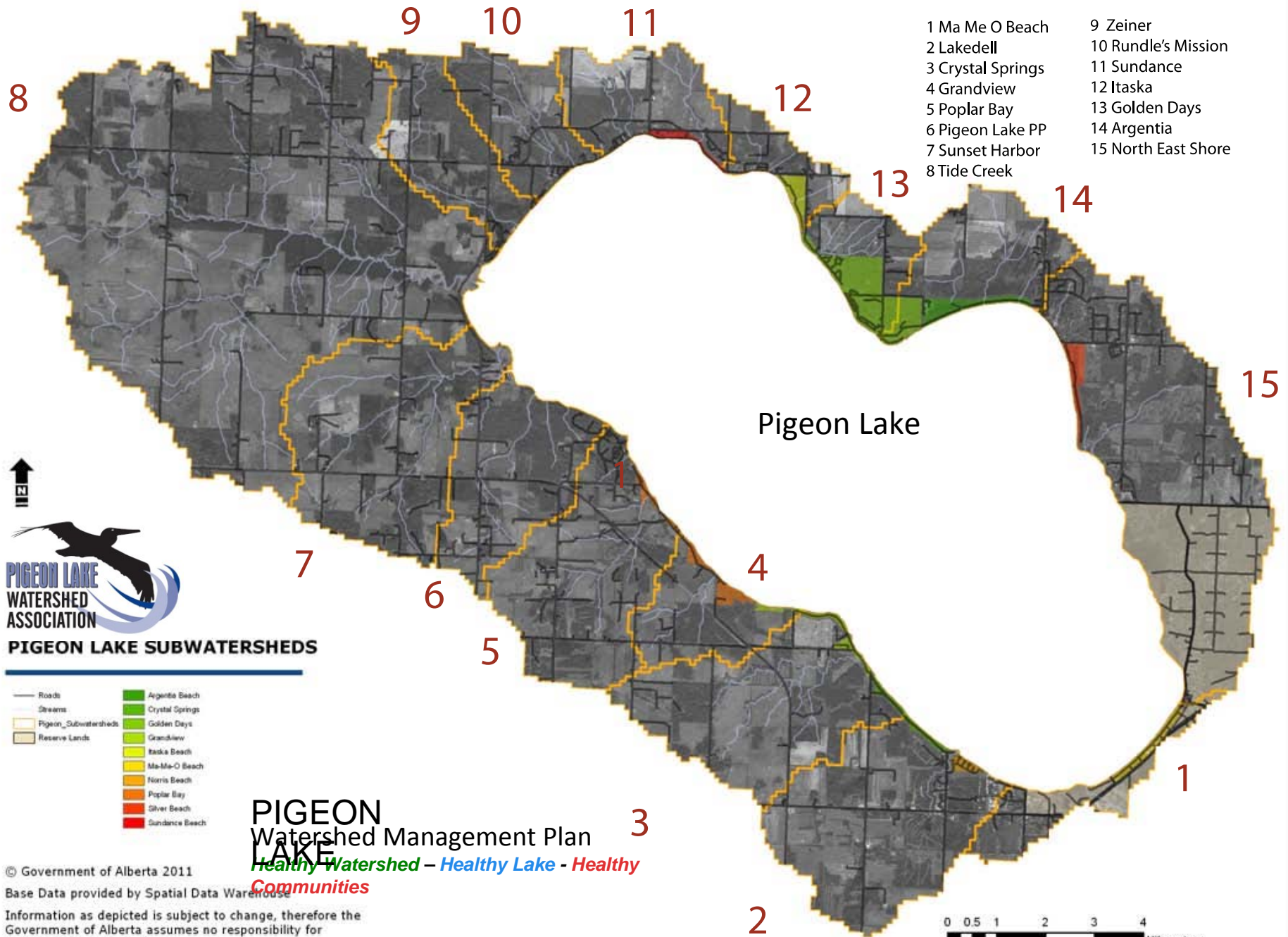
Presentation Outline

2

- PLWA and PL Watershed
- Plan Fundamentals from a WSG perspective
 - Why:
 - Who: Partnerships and Roles
 - How: Terms of Reference and Process
 - What/Where: BMP Topics
 - Outreach and Engagement
- WSG special considerations







ALGAE ADVISORY

If large amounts of Scum are visible in the water, it is advisable to take the following precautions:

- Do not swim or water ski in affected areas
- Do not allow children to play in the water in or near affected areas
- Do not drink the water (boiling or chlorination will not make the water safe)
- Prevent pets or livestock from drinking the water along the shoreline, as this could be fatal to animals
- Do not eat fish from this lake that appear unhealthy

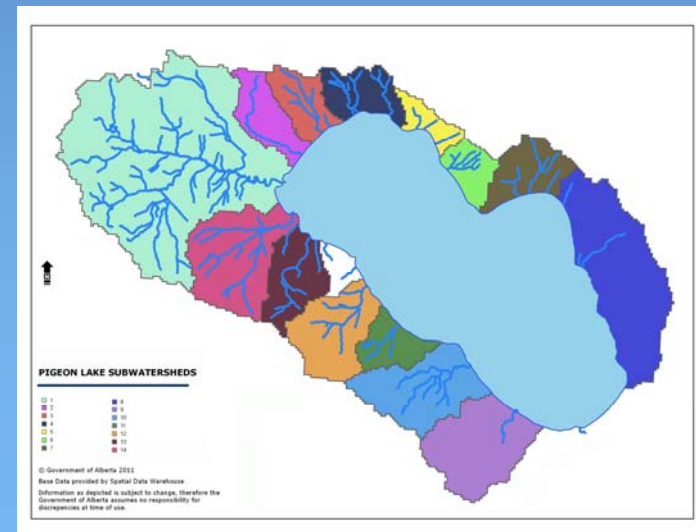
Blue-green algae, which can cause illness such as diarrhea, stomach cramps, and eye and skin irritation, have been found in this lake in the past.





Why has PLWA embarked on an WMP?

- Problem to solve through collective action
- Recommendation of State of Watershed and Water for Life Strategy
- Need to engage stakeholders: build consensus and capacity
- Need to make strategic and effective decisions
- Leverage and alignment of resources
- Regional linkage opportunities





Plan Fundamentals PLWMP – Who's Involved

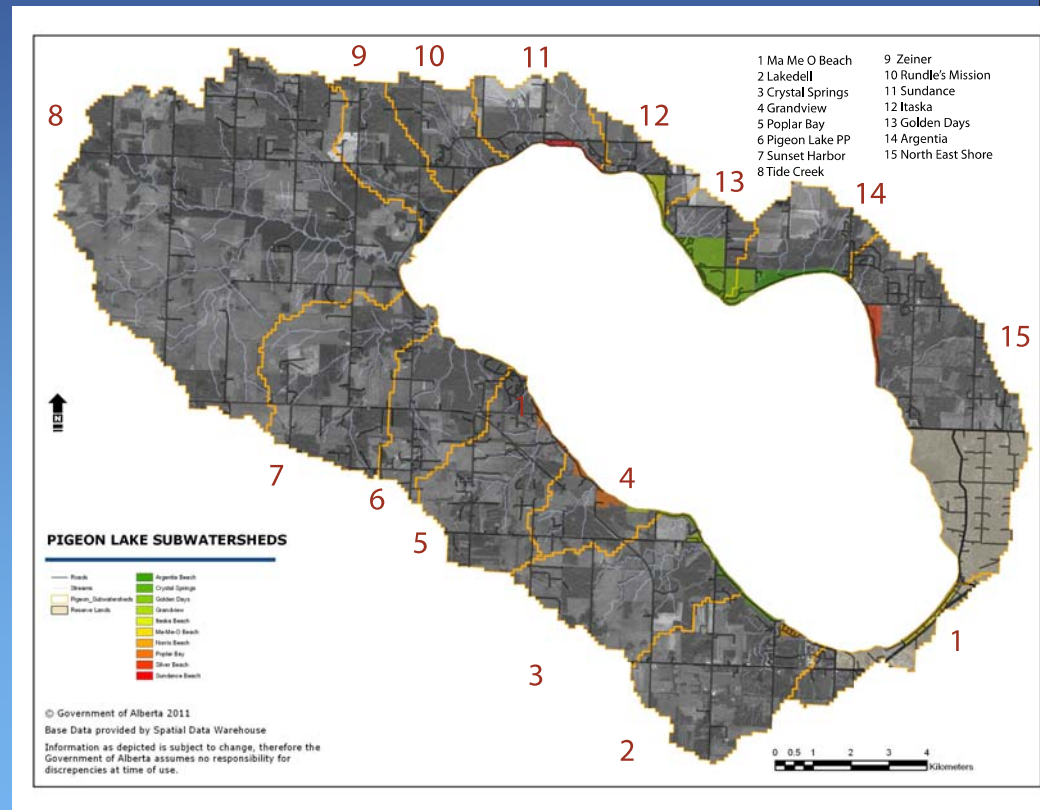
9



PLWMP Terms of Reference

10

- Prepared by Steering Committee
- Available on PLWA website.
- Sought Input
 - Reviews from both Counties
 - Topic of engagement program
- Establishes process
- Guidance document
- Final Adoption by Steering Committee and then PLWA / APLM
- Seeking statements of support





Plan Fundamentals: Focus

11

- Watershed and Source Nutrient controls
- Beneficial Management Practices (BMP)
- List of topics directed at stakeholders
- Multi-stakeholder input





Plan Fundamentals: Outcomes

12

- Series of BMP recommendations
- Support and direction for both municipalities and individuals
- Improved practices through awareness, education and legislation
- Reduced nutrient release into the lake



Plan Fundamentals: Core Strategies

13

Non Point Source Pollution Reduction

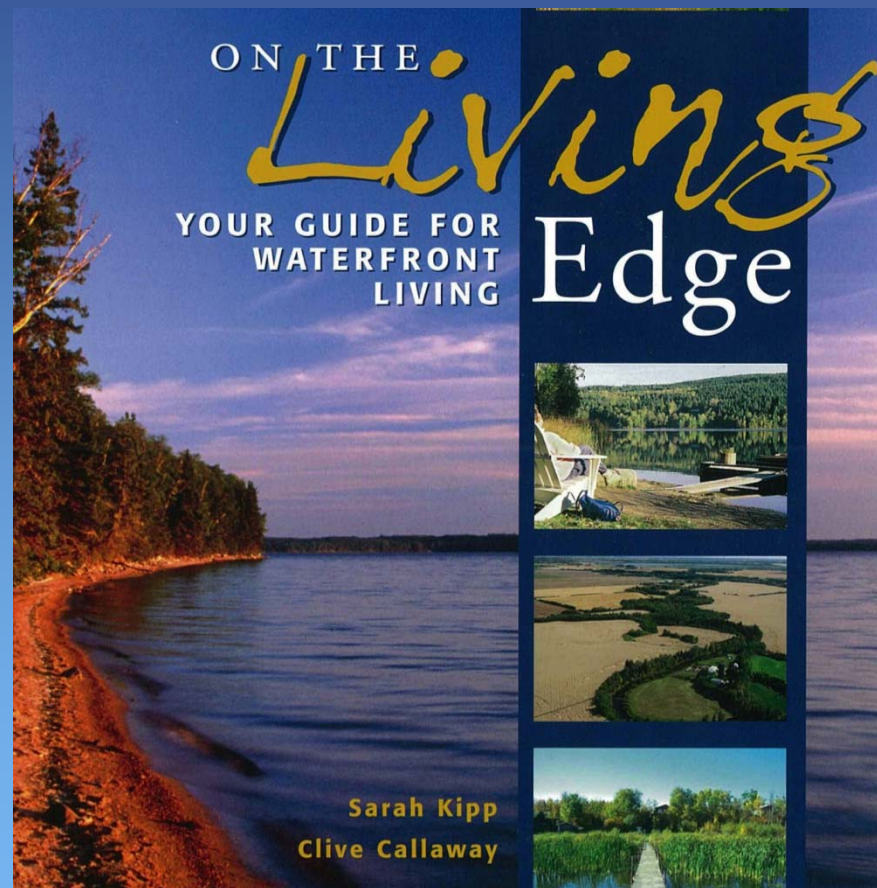
- Nutrient Source Reduction
- Bolster Natural Defenses
- Protect Priority Landscapes
- Improve Land Conversion Practices
- Improve Landscape Management Practices
- Improve Stormwater Management Practices
- Industry / Stakeholder Targeted Practices



Beneficial Management Practices (BMP)

14

- Targeted to specific audiences
- Based on best available science
- Based on the experience of others
- Intended to cause collective changes in behavior
- Generally voluntary
- Some aspects may be imbedded in legislation
- Beneficial = good, better and best



Cosmetic Fertilizers and Soil Nutrients

15

- Restriction of fertilizer use
- Targeted approach
- BMP's for residents
- Choices for municipalities
- Support and Education (PLWA)



Model Land Use Bylaw

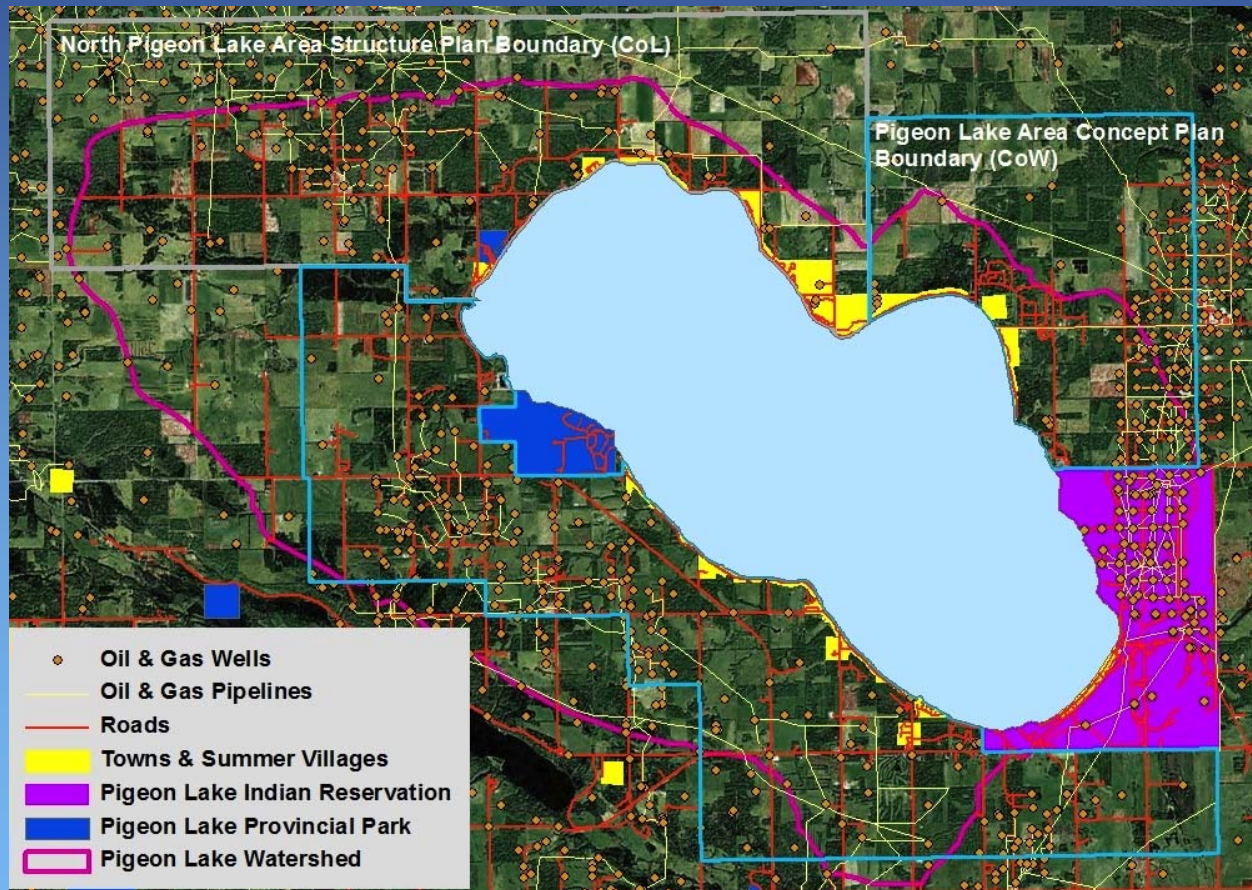
16

- Lot Development Practices



Development Practices and Storm Water Management

17



Riparian / Shoreline Restoration and Management ¹⁸



Land Conservation Priority Landscapes

19





PIGEON LAKE

Watershed Management Plan

Healthy Watershed Healthy Lake Healthy Communities

Watershed Management Plan Sectoral BMP's

20

1. Agriculture
2. Oil and Gas
3. Golf Courses



Watershed Management Plan Engagement Plan

21

1. Engagement committee developed plan

2. Identity and Outreach Program

3. PLWMP Website with online survey:
www.plwmp.ca

4. Leaders and Organizations

- Leaders Advisory Meeting.
- APLM Meeting in June

5. Stakeholders and the Public

- Workshops
- On line info and surveys

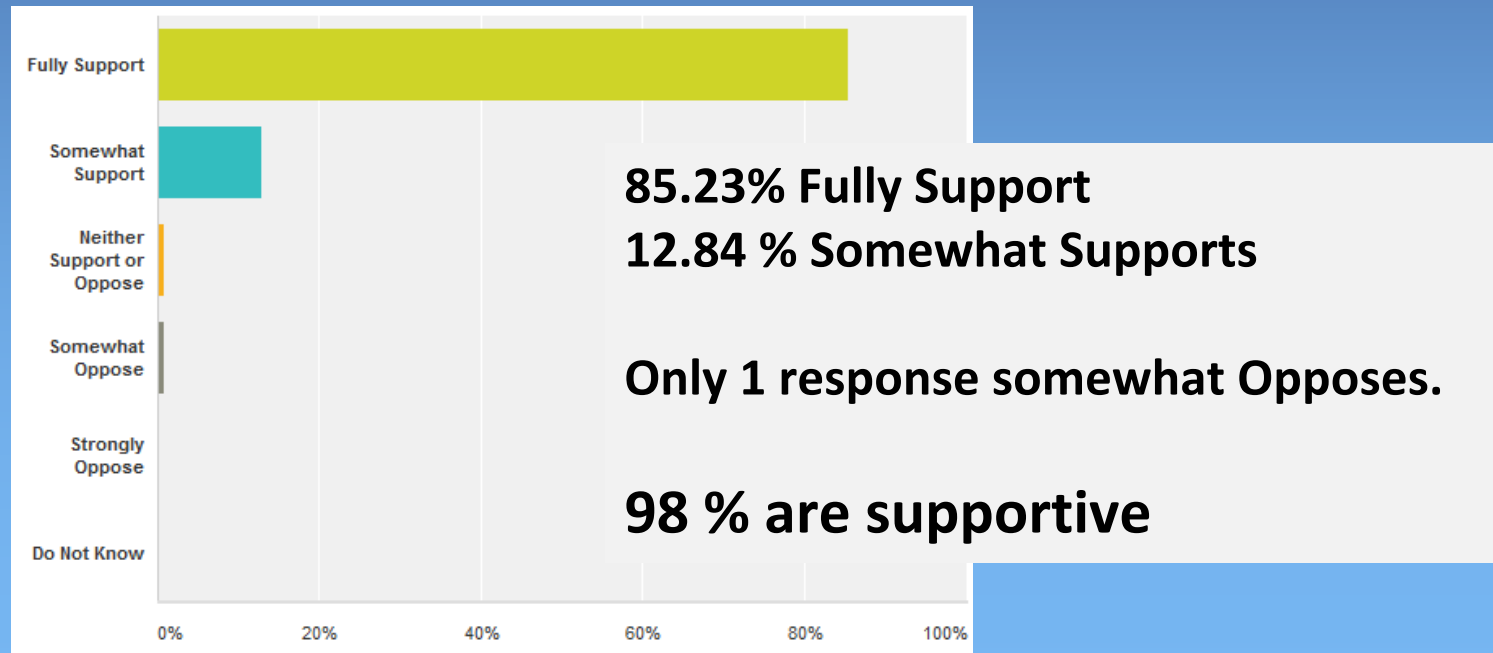


Preliminary PLWMP Results

PLWMP GOAL

22

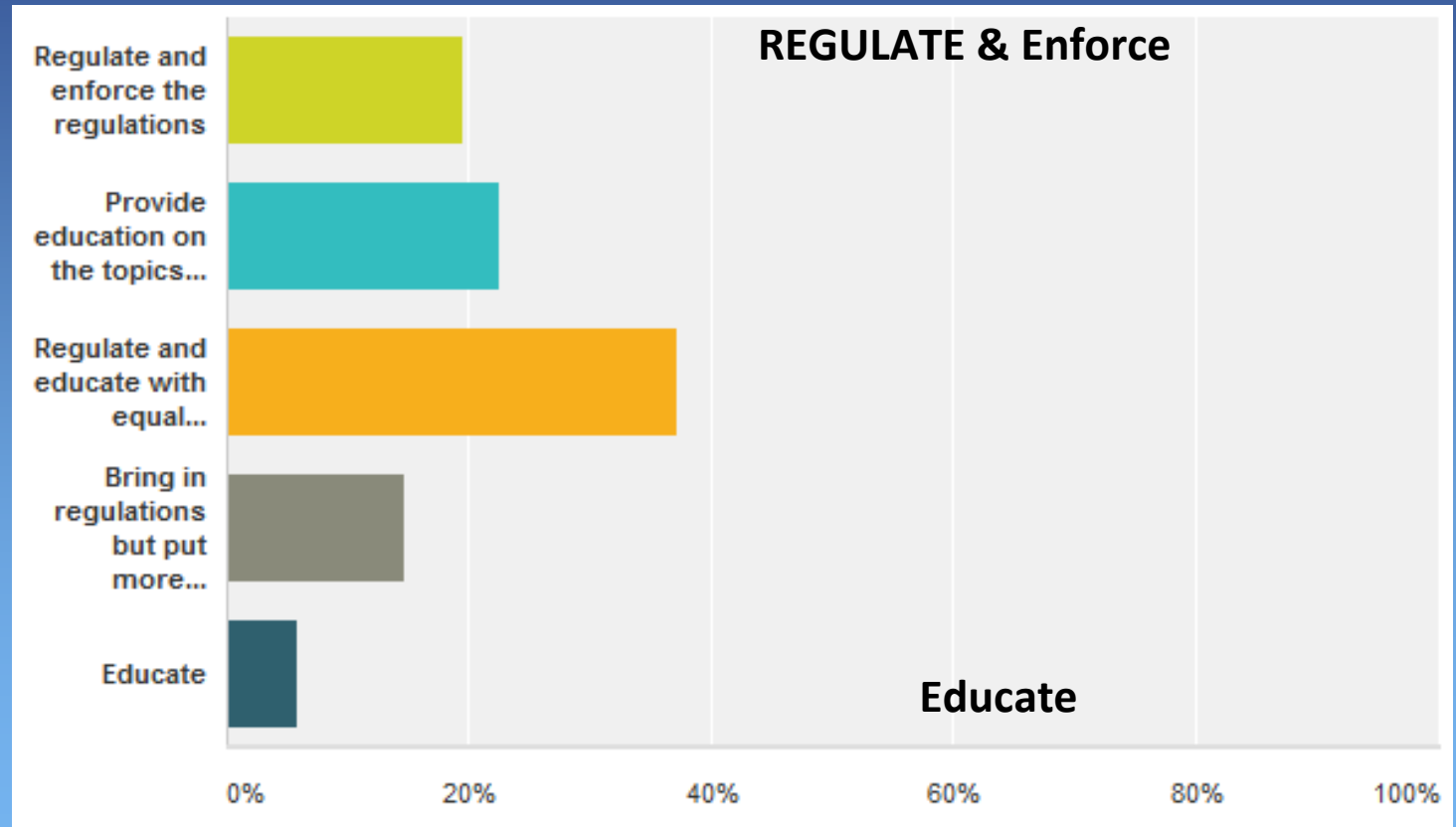
To promote the watershed's natural environment & water quality by recommending action-oriented watershed policies & best practices that support the long-term health, protection & restoration of the watershed.



Preliminary PLWMP Results

Regulate <-----> Educate

23



Considerations for WSG led WMP's

24

- **Right People: on Steering Committee**
- **Game Plan: well vetted, firm yet flexible**
- **Partnerships: Municipalities, GoA, NGO's Industry**
- **WDG Capacity Limitations: Modular BMP approach**
- **Role of WSG vs Municipal Government**





Considerations for WSG led WMP's

25

- **Identity and Optics: separate logo, Steering Committee**
- **Resource and Capacity Building: Grant Writing, Utilize engagement program to recruit**
- **Engage Subject Experts: successful with MLUB**
- **Sharing success stories with the greater watershed and lake management community**



www.plwmp.ca

www.plwa.ca

