

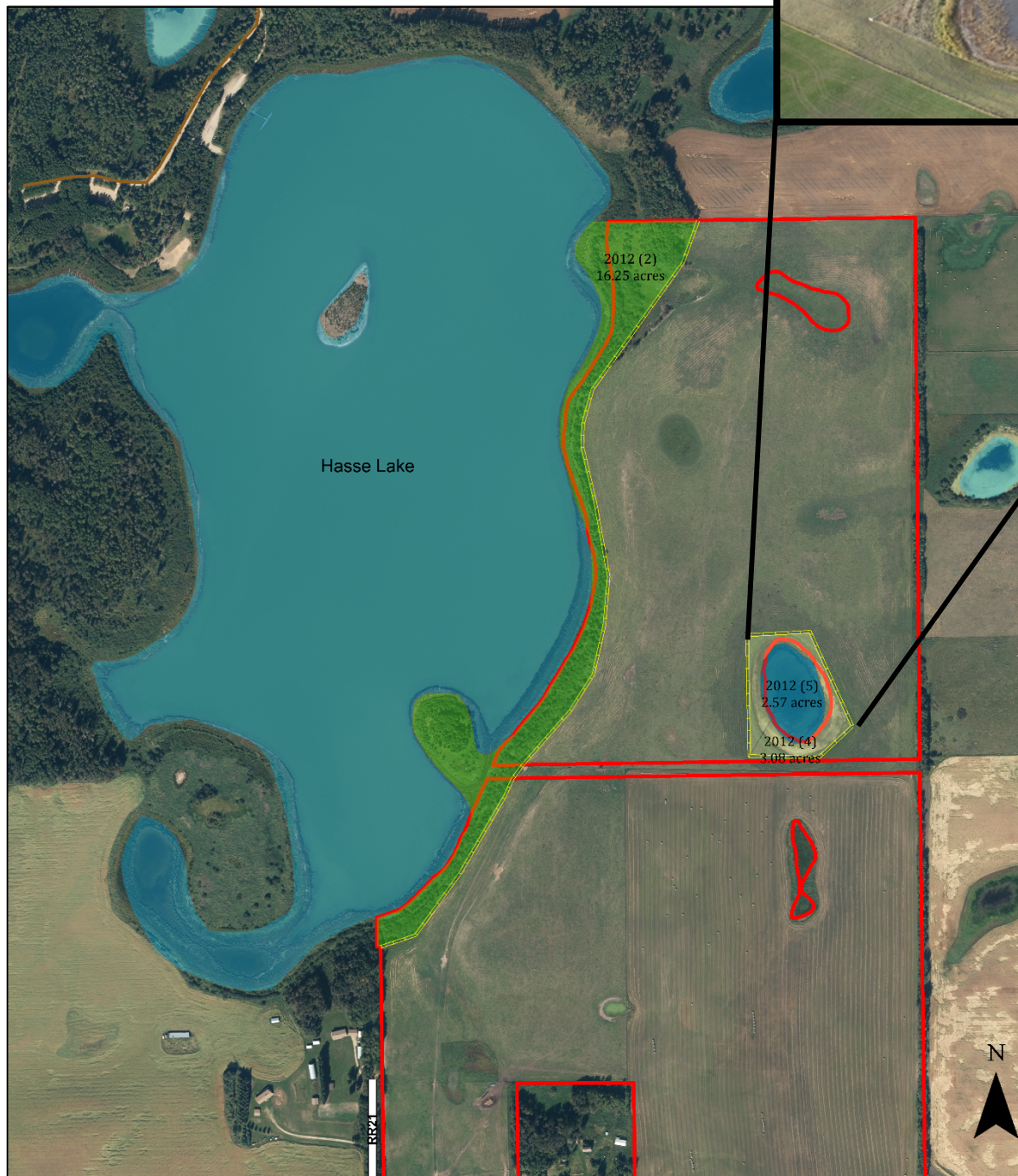
# Hasse Lake ALUS Project



Alternative Land Use Services or 'ALUS' is a voluntary program designed to work at the community level to recognize the role farmers and ranchers play as stewards of the land. ALUS pays producers annually for the ecosystem services they provide by maintaining or enhancing the environment on marginal areas of their operation. It also helps producers establish restoration projects by splitting establishment costs and providing technical expertise.

In 2013 Parkland County forged a conservation agreement with the Kleppers; owners of multiple quarter sections that surround the southeast corner of Hasse Lake. The Kleppers use the land to sustain their cattle ranching operation. The agreement described the environmental improvements that were to be completed; including having wildlife-friendly exclusion fencing installed along the East side of the Lake and completely encircling a wetland on the Lake's east side. The fence had already been installed prior to finalization of the agreement, so improvements are already being seen in the landscape!

The riparian area around the wetland can moderate the quality of both the water and the terrestrial area and provide habitat for specialized wildlife; therefore, protecting this area from the damage cattle can induce will improve the quality and quantity of ecosystem services it provides. Using wildlife friendly fencing to exclude cattle from the shoreline and increasing the natural vegetation in the area has contributed to increased water quality in Hasse Lake which also contains a public day-use park on the northwest corner.



## Legend

### Project Description

- Grassland, Native/Non-Native Mix
- Trees & Shrubs, Native/Non-Native Mix
- Waterbody, Wetland
- Control Structure, Fence
- ALUS Participant Parcel

0 115 230 460 Meters

Map Imagery 2013

