



Associated
Environmental



WABAMUN WATERSHED
MANAGEMENT COUNCIL



Platinum
member



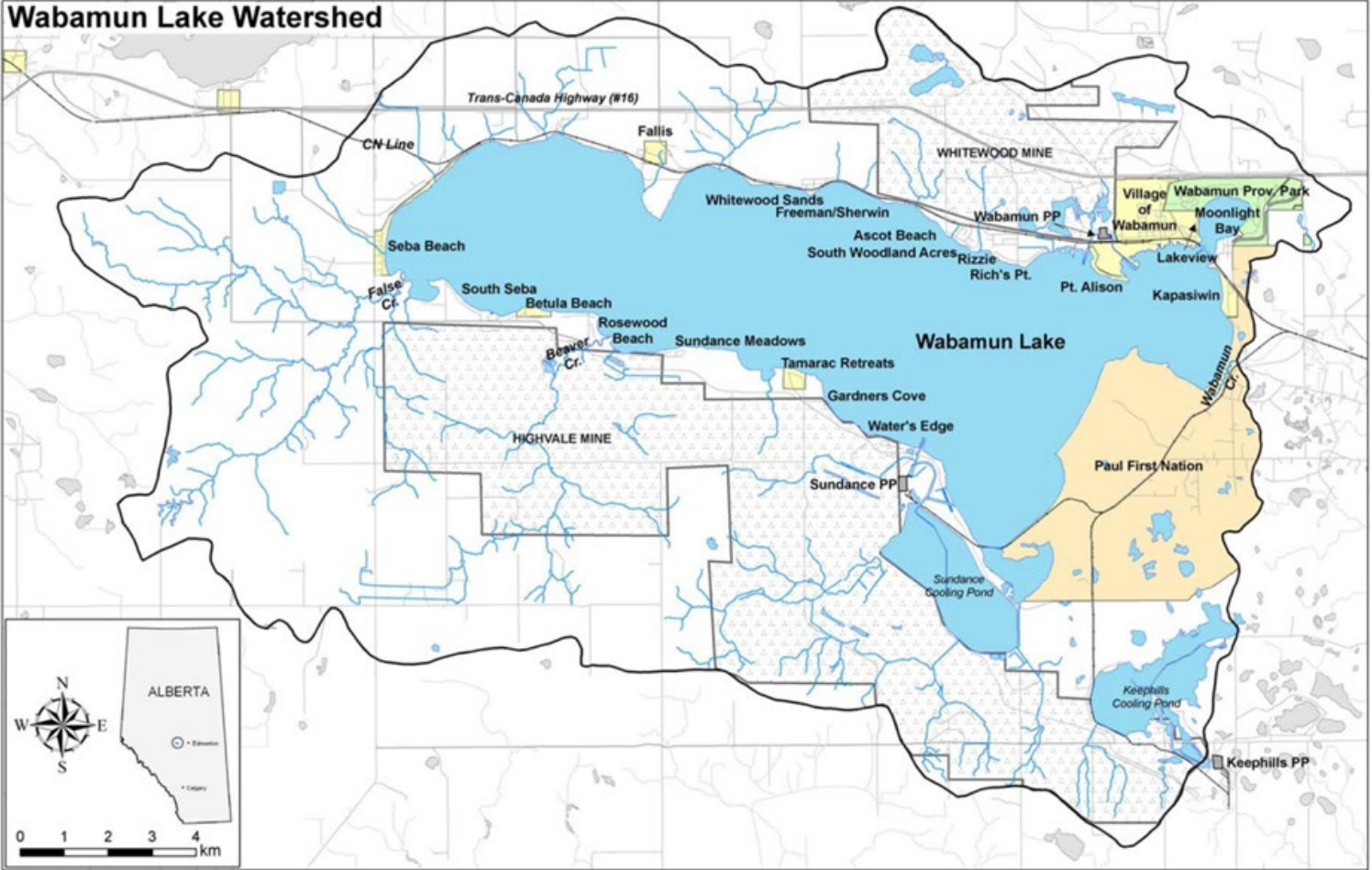
Wabamun Lake Bulrush Restoration

September 13, 2023

Kristen Andersen, P.Biol, PWS, CPESC

Background

The Story



The Plant

Schoenoplectus acutus (Hard-stem Bulrush)



https://www.illinoiswildflowers.info/grasses/plants/gt_bulrush.htm



Habitat



Function



Bulrush Planting Project Sites



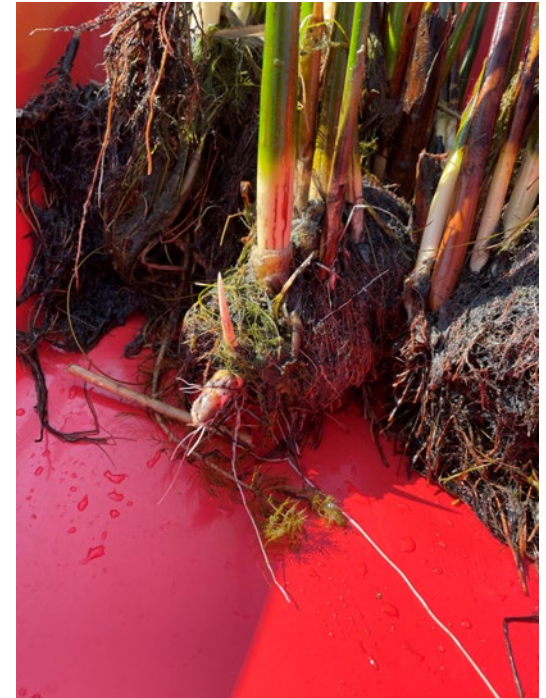
Site 3

Site 2

Site 1

Site 4

Plant Material Sources – Wild Harvest



Plant Material Sources – Nursey Stock



<https://www.minnesotawildflowers.info/grass-sedge-rush/hard-stem-bulrush>

Site 1

- Wild harvest from site planted in deepest area (~50 x 1 gallon pot sized)
- 45 x 4 inch plugs of native bulrush
- 150 x 150cc green house plugs in area closest to shore
- ~43m² of area planted



Site 1



Site 2

- Wild harvest from site planted in deepest area
- 30 x 4 inch plugs of native bulrush
- 100 x 150cc green house plugs in area closest to shore
- ~41m² of area planted



Site 2



Site 3

- Wild harvest from site planted in deepest area
- 60 x 4 inch plugs of native bulrush
- 200 green house plugs in area closest to shore
- 30 Soft stem Bulrush planted along shoreline (seen in purple)
- ~57m² of Hardstem bulrush planted



Site 3



Site 4

- Water depths of area planted ranged from 24-43cm
- Wild harvest from site planted in deepest area
- 60 x 4 inch plugs of native bulrush
- 10 x 1 gallon green house plugs in area closest to shore
- ~59m² of area planted



Site 4



Considerations

- Regulatory approvals
- Funding and timelines
- Water level fluctuation
- Wave and ice action
- Substrate



Next Steps

What's Next?

- Monitor sites annually
- Share information with landowners, stewardship groups and scientists
- Promote conservation and continue restoration
- Workshop at Seba Beach area Oct 28



Shoreline Restoration



Workshop October 28 - Seba Beach



Thank you!



Kristen Andersen andersenk@ae.ca (780) 446-5803