

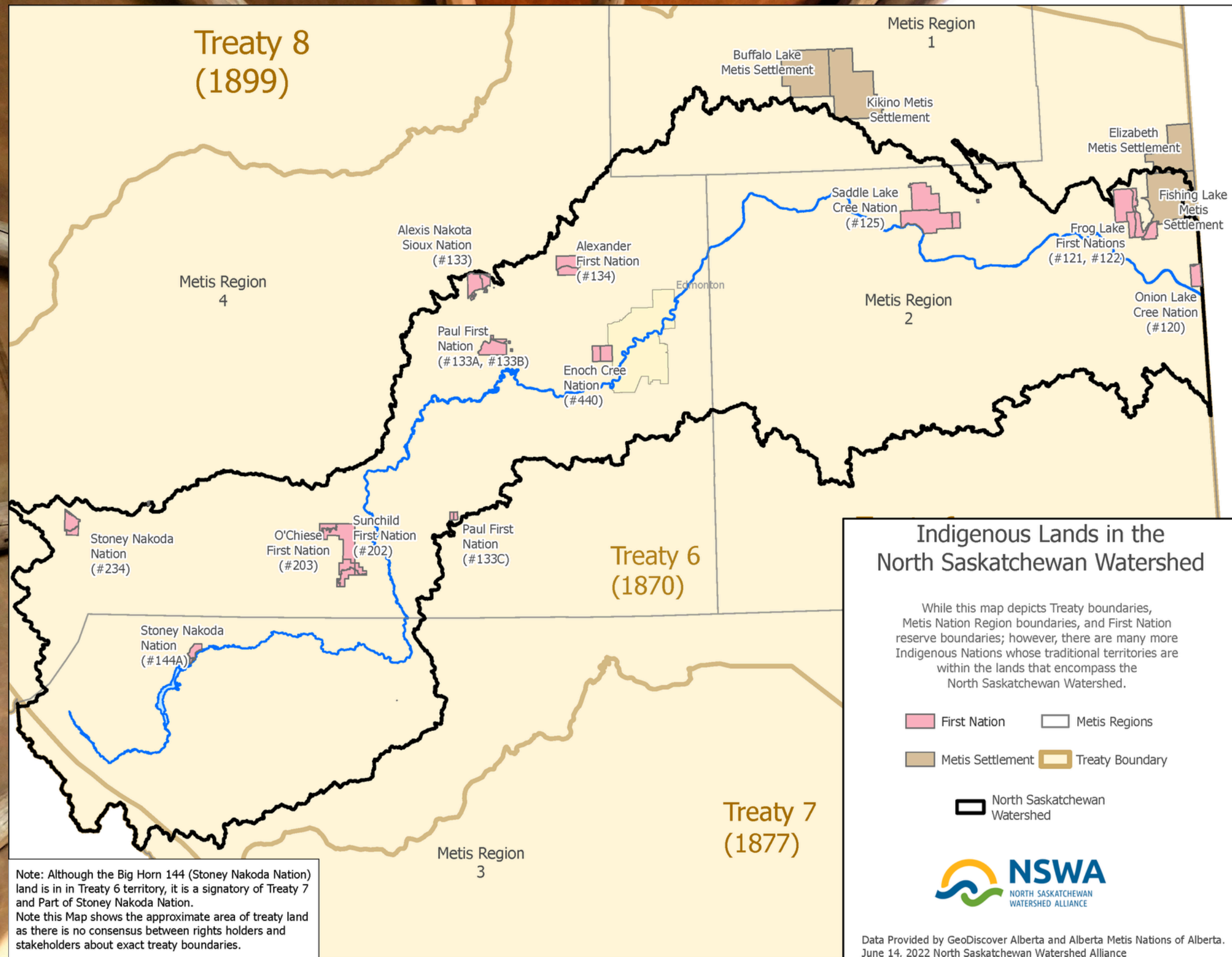
Lake Stewardship Community of Practice Forum

.....

May 29, 2024

Snow Valley Lodge, Edmonton

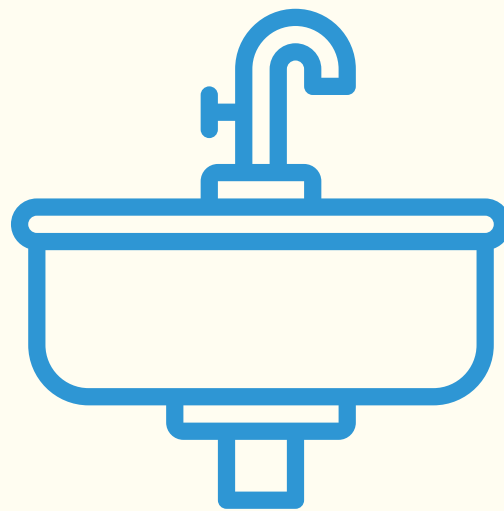




Note: Although the Big Horn 144 (Stoney Nakota Nation) land is in in Treaty 6 territory, it is a signatory of Treaty 7 and Part of Stoney Nakota Nation.
 Note this Map shows the approximate area of treaty land as there is no consensus between rights holders and stakeholders about exact treaty boundaries.

Housekeeping

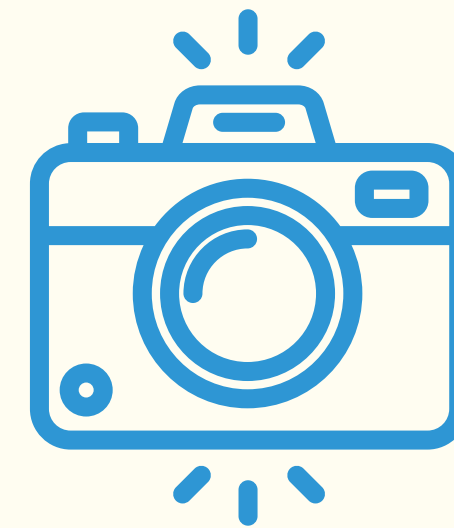
Washrooms



Emergency



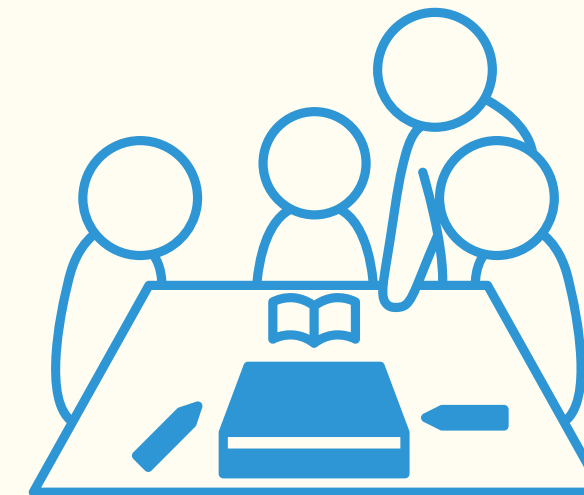
Pictures + Videos



Informal + Respectful Environment



Stay Engaged + Have Fun!



Presentation Outline

Overview of the Agenda + Plan for this Forum

About Us

Lake Stewardship Community of Practice - ALMS' Role

Lake Stewardship - NSWA's Role

Lake Stewardship - Mentimeter Question

Background on Watershed Stewardship + What's Next



Introductions

Who is in the room today?

Provincial Government?

Municipal Government?

Watershed Stewardship Groups?

Non-profit Organizations?

Universities?

Indigenous Community?

Consulting?

Who has a booth today?



Who you'll hear from during the Panel Discussion

Blake Bartlett

Sue Styles

Bernie Poulin

Bob Gibbs



FORUM AGENDA

9:00 AM

- Doors Open + Registration
- Light Meal + Refreshments

9:30 AM

- Welcome
- Lake Stewardship Community of Practice Overview Presentation

10:20AM

- Break

10:30 AM

- Lake Stewardship
 - Panel Introduction
 - Q+A - Open Discussion

12:00 PM

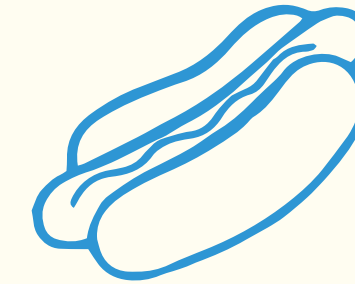
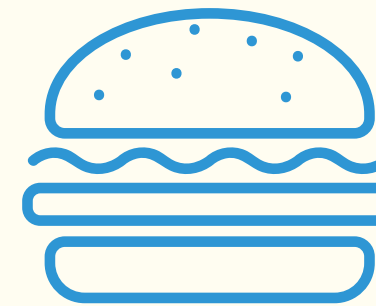
- Lunch + Break

1:30 PM

- Breakout Sessions
 - Explore Lake-Related Topics
 - Discussion on Issues + Solutions

3:00 PM

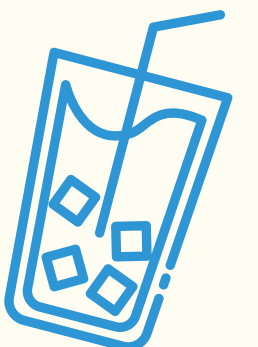
- Outdoor Social



Outline of the Breakout Sessions

Review, prioritize and discuss SWOT analysis from the 2022 ALMS Conference

Outdoor social @ Creekside Eats
1 coupon for a free drink!



ABOUT US



Who I Am + My Role

Bradley Peter | info@alms.ca
Executive Director - ALMS



Who I Am + My Role

Kelsie Norton | kelsie.norton@nswa.ab.ca

Watershed Planning Coordinator - NSWA



**LAKE STEWARDSHIP
COMMUNITY OF PRACTICE
ALMS' ROLE**





Spring 2022

Launch of the Lake Stewardship Community of Practice

SUPPORTED BY:





WHAT: The objectives of the Community of Practice are to connect, invigorate, and engage Alberta's lake watershed stewards. Our vision is a province where lake stewards are present, respected, connected, and knowledgeable stakeholders who are able to undertake community-level action to advocate for healthy lakes for Alberta's future.

HOW: In order to achieve this vision, ALMS is coordinating quarterly virtual meetings where lake stewards can network, share information, and feel a part of a community. This Community of Practice is open to anyone with an interest in lake stewardship.

MAY 2022 (ONLINE)

Community Engagement Initiatives

Blake Bartlett of the Wizard Lake Watershed Stewardship Society

JULY 2022 (ONLINE)

Advocating for your Lake

Don Davidson and Catherine Pierce of the Pigeon Lake Watershed Association

SEPTEMBER 2022 (IN-PERSON)

SWOT Analysis on Lake Watershed Management

ALMS In-Person Workshop

Participants indicated they were not aware or only somewhat aware of stewardship activities happening at other lakes in Alberta.

Sessions can be found here >



The Alberta Lake Management Society
26 subscribers

Subscribe

FEBRUARY 2023 (ONLINE)

High and Low Lake Water Levels

Featuring Kellie Nichiporik of the Moose Lake Watershed Society and Peter Cordingley of the Muriel Lake Basin Management Society

JULY 2023 (ONLINE)

In Lake Treatment

Featuring Richard Normandeau of the Half Moon Lake Residents Association

NOVEMBER 2023 (ONLINE)

Lake Watershed Stewardship Groups - Challenges and Opportunities

Featuring Sturgeon Lake Stewards, Healthy Waters Lac la Biche, and Cooking Lake Moraine Stewardship Society

“There is immense value in having a board with a diverse set of skills”.

“Elevate municipal support by providing council presentations”.

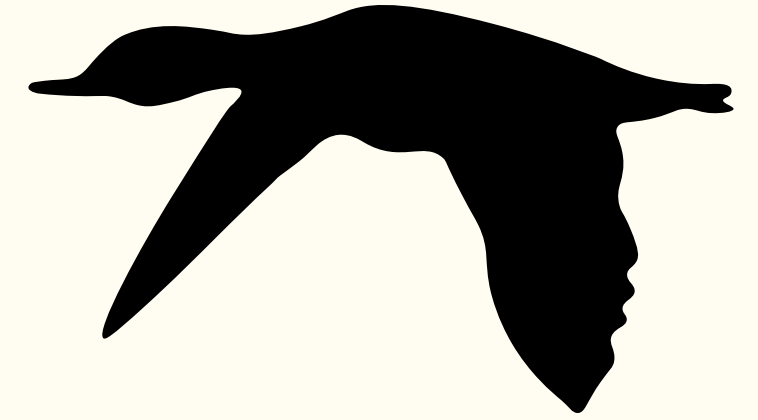
Sessions can be found here >



The Alberta Lake Management Society
26 subscribers

Subscribe

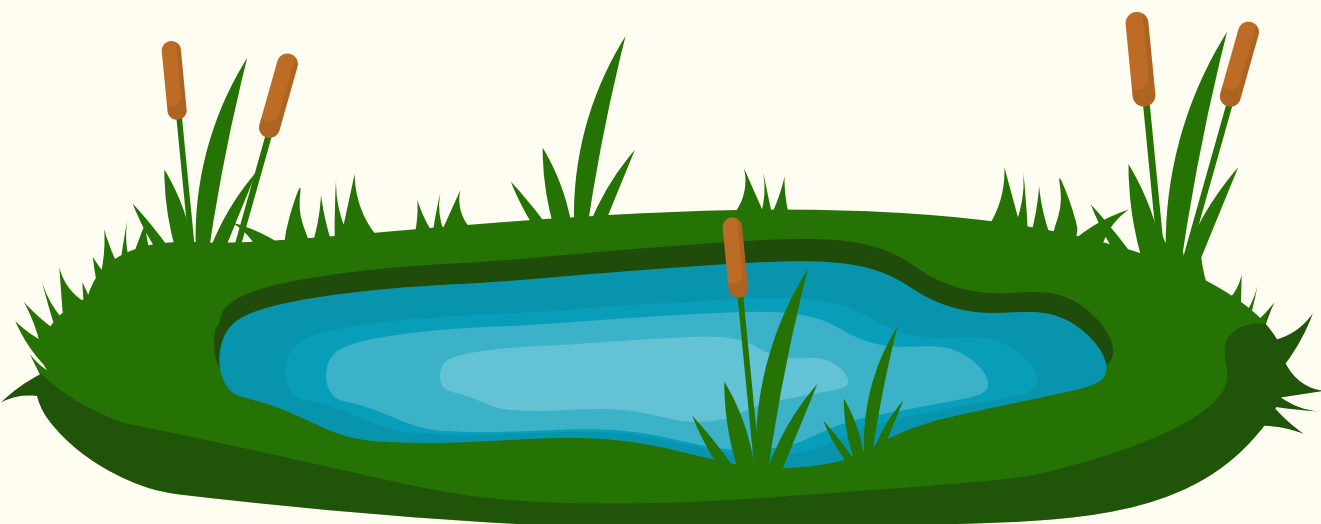
RESULTS OF LAKE STEWARDSHIP COP FORUM:



100% of survey respondents felt more informed of stewardship activities.

100% of respondents felt more connected with a network of lake stewards across Alberta.

100% of respondents were aware of new ideas for lake stewardship activities could be applied to their own lake.



MAY 2024 (IN-PERSON FORUM)

What are some needed topics for discussion for online meetings into summer/fall 2024?

Recommendations can be made on the water droplet poster!

Stewards: The treasured + foundational pieces that support lake health



LAKE STEWARDSHIP - NSWA'S ROLE



Since 2022, NSWA has been fortunate to have dedicated funding and coordinator capacity to support regional lakes!

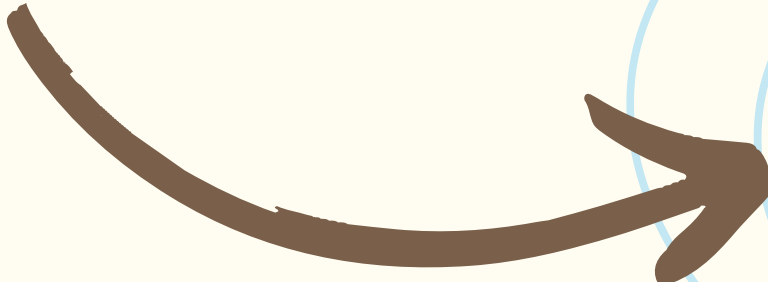
To date, we have:

- Dedicated a webpage to Lake Stewardship
- Provided Administration
 - Facilitating and coordinating meetings
 - Developing meeting materials
 - Environmental guidance on projects and efforts
- Developed New Communications
 - Printable outreach materials
 - Lake Stewardship Webinar
- On-the-ground
 - Water quality monitoring
 - Shoreline enhancement demonstration projects (in progress)



Outreach

- Setting up educational booths at events
- Revived the Lakes of Parkland Group



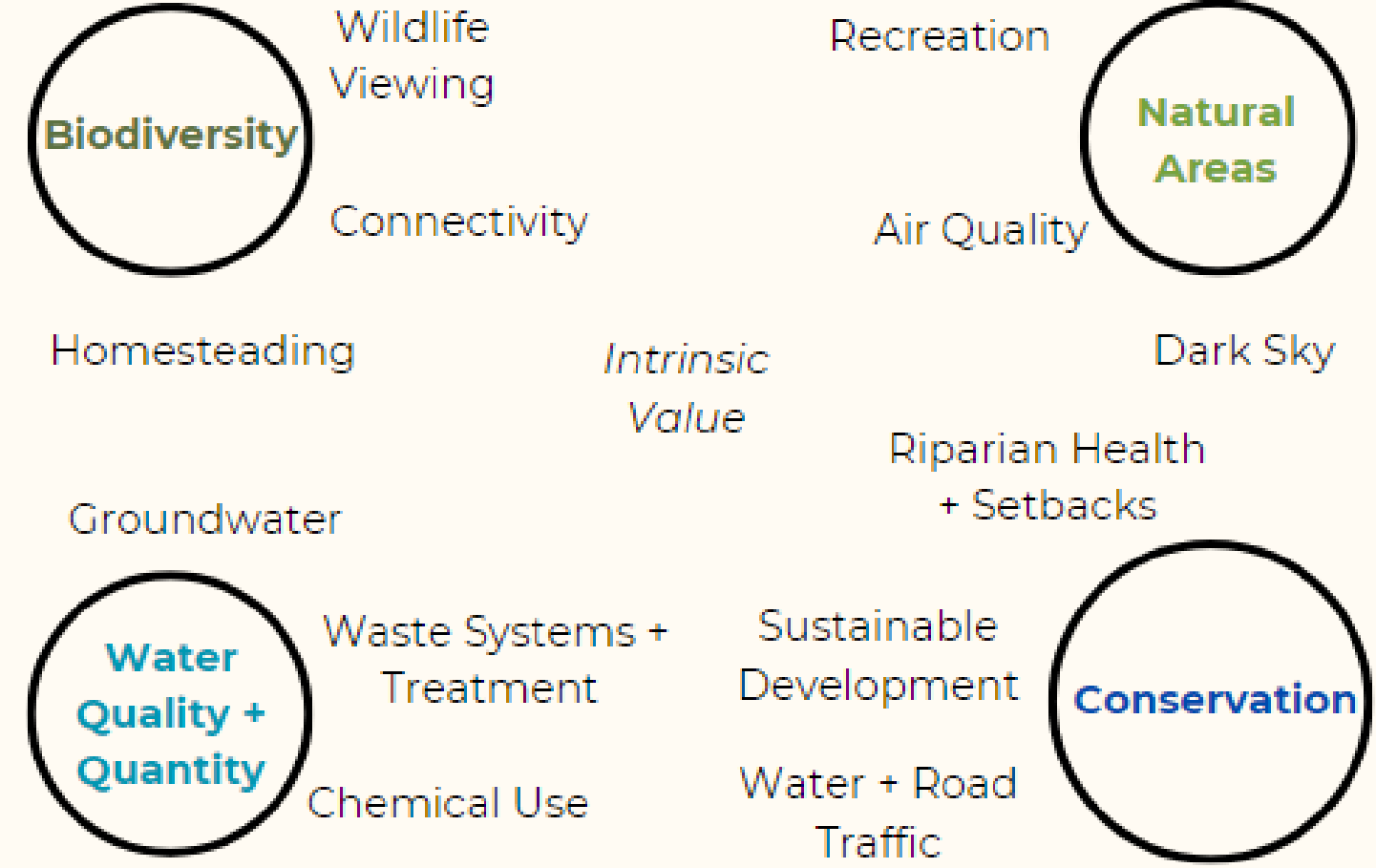
Lakes retain intrinsic value; these waterbodies hold value in their own right, independent of human uses.

Lake watershed matters are deeply interconnected, highlighting that some systems within a lake environment may support an array of values whilst also being influenced by various topics of interest.

The health and intactness of the systems support overall well-being for all.

This is best accomplished through lake leadership, stewardship, and collaboration.

COLLECTIVE VALUES + RELATED TOPICS OF INTEREST



Moving forward, we aim to set the reality stage for Alberta Lakes and provide an opportunity for knowledge transfer, sharing of best management practices, and promote science-based decision making!

LAKE DEPTHS

| LAKE NAME | AVERAGE DEPTH (M) | MAXIMUM DEPTH (M) |
|--------------|-------------------|-------------------|
| SPRING | 1.9 | 9.1 |
| JACKFISH | 3.4 | 9 |
| ISLE | 4.1 | 8 |
| LAC STE ANNE | 4.8 | 9 |
| WIZARD | 6.2 | 11 |
| WABAMUN | 6.3 | 11 |
| MAYATAN | 9.6 | 26.6 |
| HUBBLES | 10 | 33 |

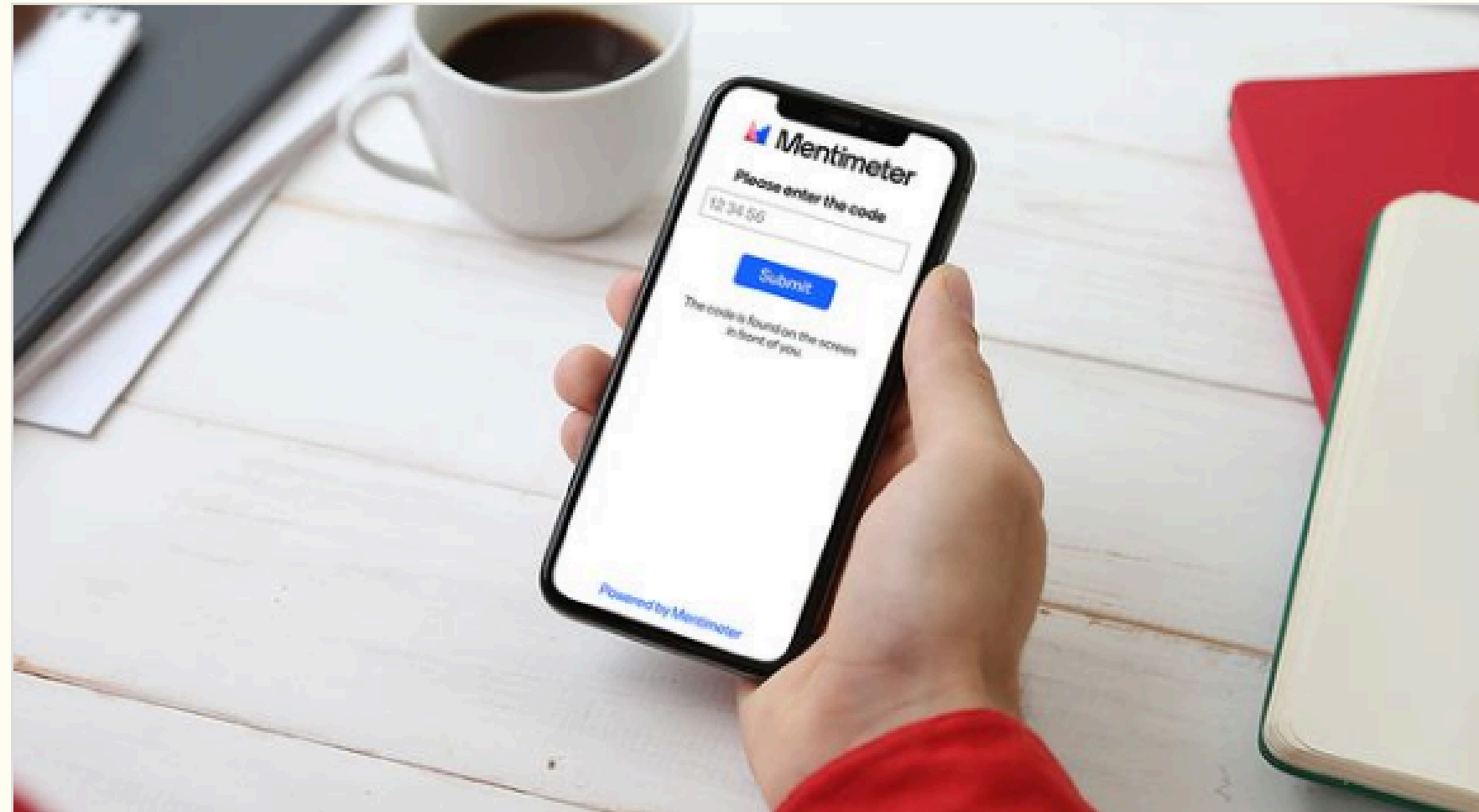


**LAKE STEWARDSHIP
MENTIMETER QUESTION**



Mentimeter on Lake Stewardship

5766 3004



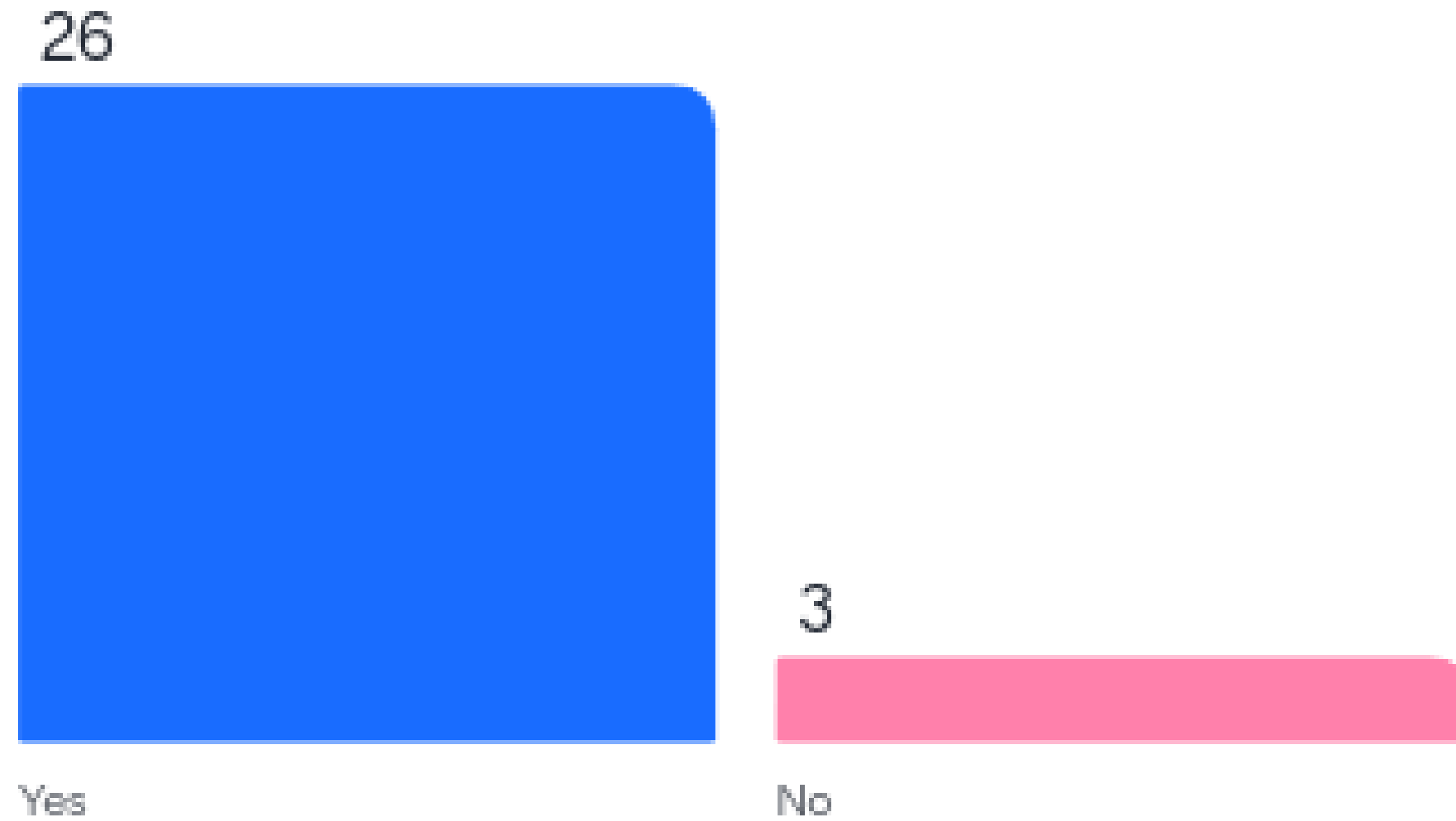
My First Poll

Participate in live polls, quizzes, and surveys - no login required. Enter the join code to vote and submit responses in real-time.

 Mentimeter

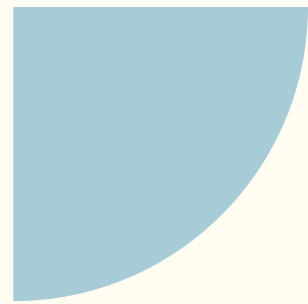


Are you an environmental steward?





**BACKGROUND ON WATERSHED
STEWARDSHIP + WHAT'S NEXT**



How do we define stewardship?



2003: National Watershed/Coastal Zone Stewardship Policy Recommendations and Suggested Actions for Implementation

Refers to the wide range of actions and activities of landowners, private companies, individual volunteers, communities, groups, organizations, and all levels of governments acting alone or in partnership, to promote, monitor, and conserve biodiversity, to develop and use all natural resources in a sustainable manner, and to maintain the ecosystem on which life depends.

How do we define a stewardship ethic?

2002: Federal-Provincial-Territorial Stewardship Working Group



An ethic by which Canadians care for our land, water and air as parts of a natural life-support system and act to sustain and enhance it for generations to come.

How do we define watershed stewardship?

2003: National Watershed/Coastal Zone Stewardship Policy Recommendations and Suggested Actions for Implementation



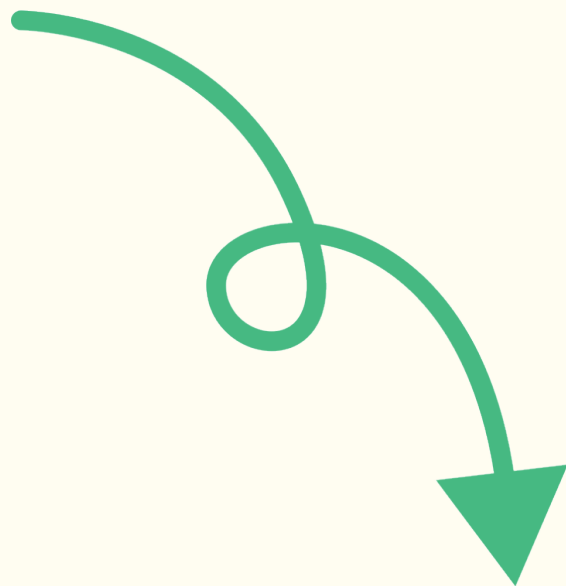
Refers to stewardship actions and activities organized around, and focused on promoting, monitoring, and conserving the ecological health (e.g., biodiversity) of a watershed unit. Since watersheds often span across many jurisdictional boundaries (e.g., of governments, of agencies, and organizations), effective watershed stewardship requires strong collaboration among communities and all levels of governments. Successful watershed stewardship is based on integrated planning, implementation, and evaluation processes.

Policy Recommendations:

2003



Seven Emergent Themes



List of Suggested Actions by
Community vs. Government
Actions

One Primary Recommendation
Plus Further Recommendations

Policy Recommendations: 2003

Themes:

- Founding Mechanisms
- Funding
- Partnerships
- Governance
- Monitoring and Evaluation
- Volunteers
- Information and Communication



21 Policy Recommendations

Recommendations of interest:

- 4: Provide necessary support to meet the specific challenges of emerging groups/programs.
- 5: Create stability for watershed stewardship groups and programs by generating long-term, stable funding through diverse sources.
- 11: Support the development of a network of watershed stewardship organizations.
- 15: Include monitoring and evaluation as part of program design and development.
- 17: Provide volunteer stewards and stewardship groups with support to maintain momentum and produce successful, long-term initiatives.
- 18: Honour volunteers by publicly recognizing, celebrating, and rewarding their efforts and accomplishments.
- 21: Create a community-wide, awareness-raising program that builds a stewardship ethic across generations and sectors.

Which of these policies have we achieved?

Which of these policies can we achieve?

What new recommendations need to be made?



WHAT'S NEXT FOR THE LAKE STEWARDSHIP COP?

2024/2025: Three Online Webinars

September 18/19 2024: ALMS In Person Workshop in Hinton

Identifying research and knowledge gaps on lakes.



THANK YOU!

QUESTIONS?

*Stewardship is not a solitary journey;
it is a collective endeavor.*

*It is a community of practice where
each of us brings our unique
strengths, knowledge, and passion to
the table.*



Proudly Supported By:

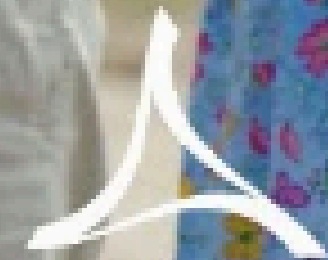
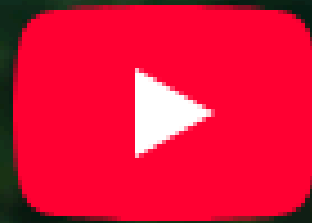





Pigeon Lake Watershed Association: Emerald Documentary Series Season Three



Share



Alberta
Emerald
Foundation

Watch on  YouTube



A family of volunteers help keep Wizard Lake in shape



Share



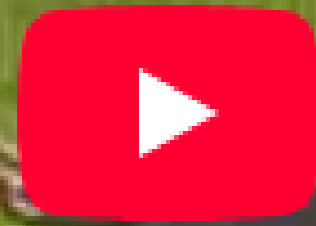
Watch on  YouTube



2021 Flowering Rush Herbicide Application at Lake Isle



Share



Watch on  YouTube **The impacts of flowering rush are quite obvious once you're here**

Content is no longer available



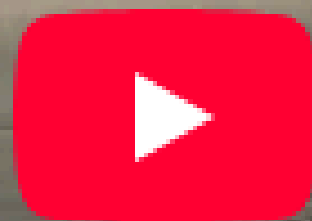
Wabamun Watershed a plan for all seasons




Share

It takes a community to protect a lake

THE WABAMUN LAKE WATERSHED PLAN
AND HOW WE CAN ALL HELP



Watch on  YouTube

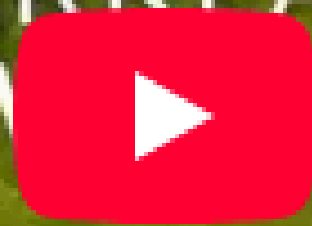


Parkland Lakes Video



Copy link

LAKES OF PARKLAND COUNTY FROM ABOVE AND BELOW



©2022 MAYATAN LAKE MANAGEMENT ASSOCIATION

Watch on  YouTube







Thank you for coming!

Happy Stewarding!

