



*THE ALBERTA LAKE MANAGEMENT SOCIETY
VOLUNTEER LAKE MONITORING PROGRAM*

2012 Laurier Lake Report

COMPLETED WITH SUPPORT FROM:





Alberta Lake Management Society's LakeWatch Program

LakeWatch has several important objectives, one of which is to collect and interpret water quality data on Alberta Lakes. Equally important is educating lake users about their aquatic environment, encouraging public involvement in lake management, and facilitating cooperation and partnerships between government, industry, the scientific community, and lake users. LakeWatch Reports are designed to summarize basic lake data in understandable terms for a lay audience and are not meant to be a complete synopsis of information about specific lakes. Additional information is available for many lakes that have been included in LakeWatch and readers requiring more information are encouraged to seek those sources.

ALMS would like to thank all those who express interest in Alberta's aquatic environments and particularly those who have participated in the LakeWatch program. These people prove that ecological apathy can be overcome and give us hope that our water resources will not be the limiting factor in the health of our environment.

Historical data has been re-queried and summarized for the 2012 report.

Acknowledgements

The LakeWatch program is made possible through the dedication of its volunteers. We would like to thank volunteer Bev Smith for her assistance with and dedication to sampling Laurier Lake. We would also like to thank Randi Newton and Erin Rodger who were summer technicians with ALMS in 2012. Program Coordinator Bradley Peter was instrumental in planning and organizing the field program. Technologists Trina Ball and Brian Jackson were involved in the training aspects of the program. Doreen LeClair, Chris Rickard, and Lisa Reinbolt were responsible for data management. Théo Charette, Ron Zurawell, Lori Neufeld, and Sarah Lord prepared the original report, which was updated for 2012 by Bradley Peter and Arin Dyer. Alberta Environment and the Beaver River Watershed Alliance (BRWA) were major sponsors of the program.

LAURIER LAKE:

Laurier Lake is one of four beautiful lakes that were left behind 10,000 years ago when glaciers carved a hummocky terrain of kettles, eskers, and lake basins. Archaeological evidence indicates that the area was inhabited 7000 years ago, with Europeans arriving in 1754 by way of the nearby North Saskatchewan River.

The Whitney Lakes Provincial Park adjacent to Laurier Lake was established in 1982. It boasts a diverse setting of jack pine (*Pinus banksiana*) meadows, aspen (*Populus spp.*) groves, willow (*Salix spp.*) thickets, marshes, fens, and mixed wood forests. As many as 148 bird species have been observed in the park with an excellent viewing point on the west side of Laurier Lake. The land surrounding Laurier Lake includes a mixture of recreational cottage development, cleared agricultural land, and natural deciduous forest. Protected Crown Land makes up the north shore of the lake and the remainder is privately owned.

The lake is enjoyed through recreational activities including hiking, wildlife viewing, and water-based recreation such as wind surfing, water-skiing, sailing, swimming, and fishing. Yellow perch (*Perca flavescens*) and northern pike (*Esox lucius*) are the sport fish of Laurier Lake. Fish stocking occurred in 1953 with sport and forage fish transferred from Moose Lake to Laurier Lake. The lake has not been managed for commercial or domestic fisheries.



Figure 1 – LakeWatch Coordinator Bradley Peter and volunteer Bev Smith at Laurier Lake. Photo by Pauline Pozsonyi, 2011.

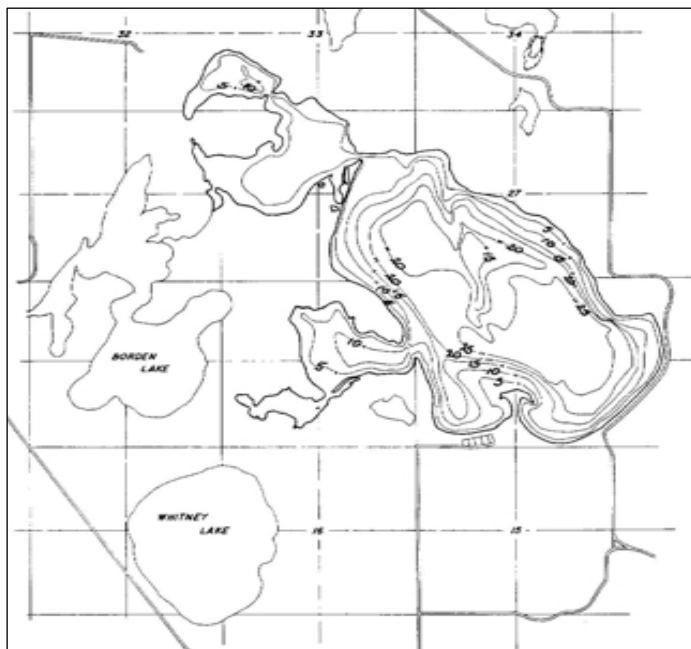


Figure 2 – Bathymetric map of Laurier Lake showing five-foot depth contour intervals.

WATER QUANTITY:

There are many factors influencing water quantity. Some of these factors include the size of the lakes drainage basin, precipitation, evaporation, water consumption, ground water influences, and the efficiency of the outlet channel structure at removing water from the lake.

Laurier Lake has a surface area of 6.42 km², a maximum of depth of approximately 6.0 m, and a drainage basin of 92.0 km² (which is shared with Ross, Borden, and Whitney Lakes; Figure 2). One intermittent and three permanent streams feed into Laurier Lake. The outflow, on the northwest end, drains into Borden Lake and subsequently into the North Saskatchewan River. Since 1968, water levels at Laurier Lake have shown a general trend towards decline (Figure 3). Maximum water elevation was observed in 1974 at 567.2 meters above sea level (m asl), and a minimum of 564.0 m asl was observed in 2004. Since 2004, water levels have shown an increasing trend (likely assisted by the large amounts of run-off observed in 2011), reaching an average of 565.516 m asl in 2012 – a value this high has not been observed since 1998.

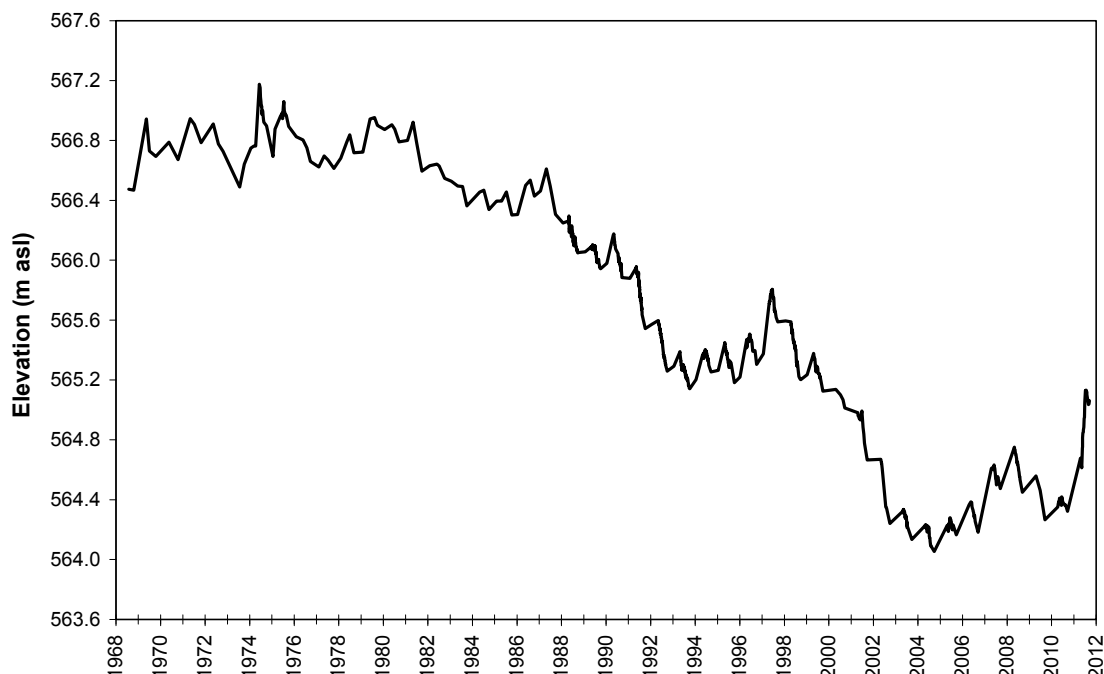


Figure 3 – Historical water levels for Laurier Lake recorded in meters above sea level (m asl) from 1968 to 2012. Data retrieved from Alberta Environment.

WATER CLARITY AND SECCHI DEPTH:

Water clarity is influenced by suspended materials, both living and dead, as well as dissolved colored compounds in the water column. During the melting of snow and ice in spring, lake water can become turbid (cloudy) from silt transported into the lake. Lake

water usually clears in late spring but then becomes more turbid with increased algal growth as the summer progresses. The easiest and most widely used measure of lake water clarity is the Secchi disk depth.

Average Secchi disk depth at Laurier Lake in 2012 measured 3.10 m (Table 1). This is slightly lower than the previous summer's average of 4.00 m, though still falls on the high end of the natural variability measured at Laurier Lake. Secchi disk depth reached a maximum of 5.00 m on June 7th and a minimum of 1.75 m on August 29th. Secchi disk depth appeared to change consistently with chlorophyll-*a* concentrations, suggesting algae/cyanobacteria as one of the primary factors affecting water transparency at Laurier Lake. In addition, concentration of total suspended solids was low (Table 1), suggesting stirred up sediment is not greatly affecting water clarity at Laurier Lake.

WATER TEMPERATURE AND DISSOLVED OXYGEN:

Water temperature and dissolved oxygen profiles in the water column can provide information on water quality and fish habitat. The depth of the thermocline is important in determining the depth to which dissolved oxygen from the surface can be mixed. Please refer to the end of this report for descriptions of technical terms.

Surface water temperature at Laurier Lake ranged from a minimum of 16.27 °C on June 7th, to a maximum of 23.54 °C on July 11th (Figure 4a). Thermal stratification was observed twice during the summer of 2012 – on July 11th between 2.50 m and 4.50 m, and on August 1st between 5.50 m and 6.50 m. Because Laurier Lake is large and shallow, it is likely that the lake undergoes multiple periods of mixing and temporary stratification – a lake displaying this pattern is known as polymictic. Periods of stratification can lead to the depletion of dissolved oxygen in the hypolimnion.

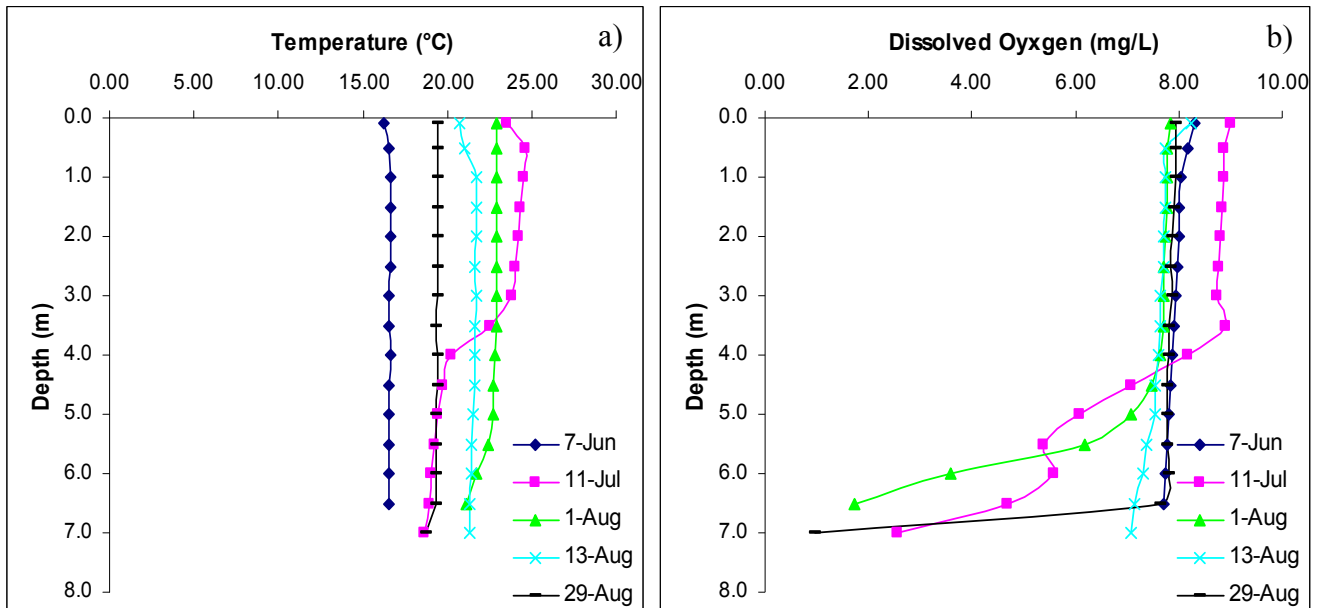


Figure 4 – Temperature (°C) and dissolved oxygen (mg/L) profiles for Laurier Lake measured during the summer of 2012.

For most of its water column, dissolved oxygen levels at Laurier Lake remained well above the Canadian Council for Ministers of the Environment (CCME) recommended guidelines of 6.5 mg/L (Figure 4b). Near the lakebed, however, dissolved oxygen concentrations declined, likely due to the decomposition of organic matter which is an oxygen consuming process. Depletion of dissolved oxygen in the hypolimnion was most pronounced on July 11th, when the lake was thermally stratified. Thermal stratification can limit the amount of atmospheric oxygen that is mixed into bottom waters.

WATER CHEMISTRY:

ALMS measures a suite of water chemistry parameters. Phosphorus, nitrogen, and chlorophyll-a are important because they are indicators of eutrophication, or excess nutrients, which can lead to harmful algal/cyanobacteria blooms. One direct measure of harmful cyanobacteria blooms are Microcystins, a common group of toxins produced by cyanobacteria. See Table 1 for a complete list of parameters.

In 2012, average Total Phosphorus (TP) concentration measured 36.4 µg/L (Figure 5). A value of 36.4 µg/L falls into the eutrophic, or nutrient rich, classification. Less than the amount measured in 2011, this value falls well within the historical variation measured at Laurier Lake. Throughout the summer, TP values ranged from a minimum of 32 µg/L on June 7th to a maximum of 40 µg/L on August 29th.

Similar to TP, total Kjeldahl nitrogen (TKN) was slightly lower in 2012 (2.152 mg/L) than in 2011. A value of 2152 µg/L falls into the hypereutrophic classification.

Finally, chlorophyll-*a* values in 2012 were low, measuring an average of 5.85 µg/L, which falls into the mesotrophic, or moderately productive, classification. It is possible that the high salinity of Laurier Lake acts to inhibit the growth of algae/cyanobacteria blooms, as the concentrations of chlorophyll-*a* are much less than one would expect given the lake's nutrient concentrations.

Average pH at Laurier Lake in 2012 measured 8.84 – well above neutral, which is not unusual for this lake (Table 1). A high pH is likely maintained by Laurier Lake's high alkalinity (523.8 mg/L CaCO₃) and bicarbonate (546.8 mg/L HCO₃) concentrations. Dominant ions include sodium (101.9 mg/L), magnesium (84.6 mg/L), and sulphate (118.3 mg/L). High concentrations of dissolved ions contribute to a high conductivity (1143.6 µS/cm), which may help to inhibit the growth of large algal blooms. Metals were measured twice during the summer of 2012 and all values fell within their respective guidelines (Table 2).

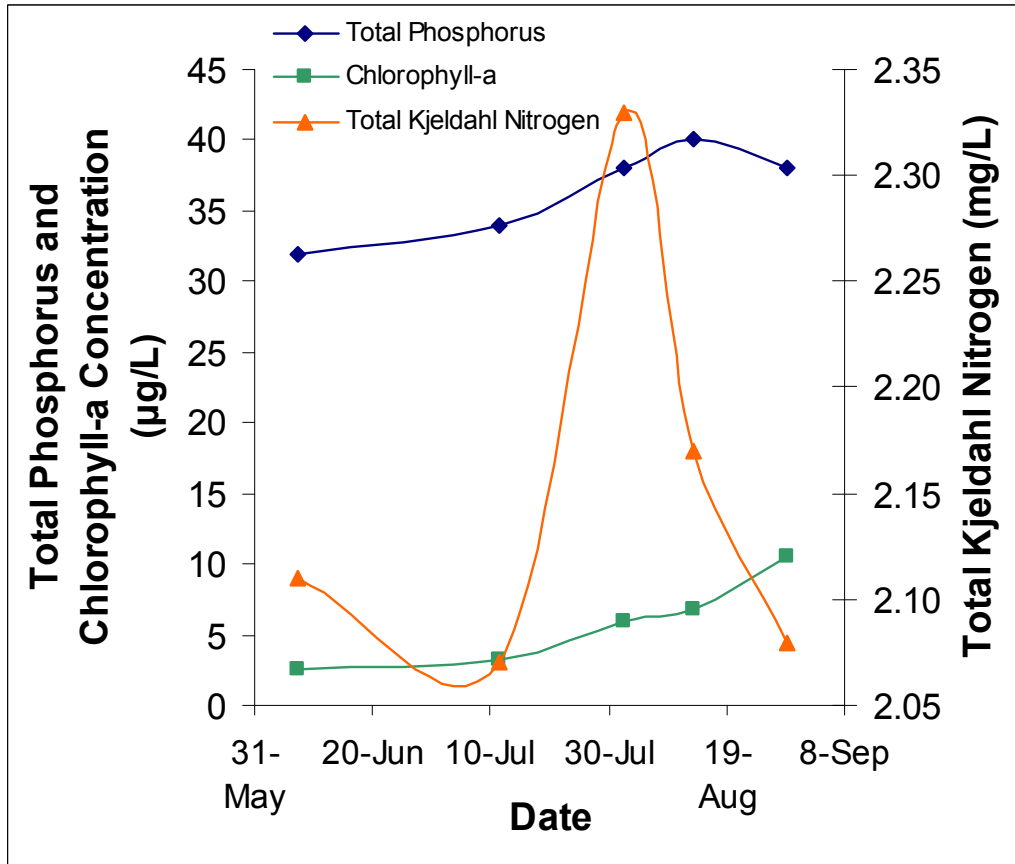


Figure 5 – Concentrations of total phosphorus ($\mu\text{g/L}$), chlorophyll-a ($\mu\text{g/L}$), and total Kjeldahl nitrogen (mg/L) measured five times over the course of the summer at Laurier Lake.

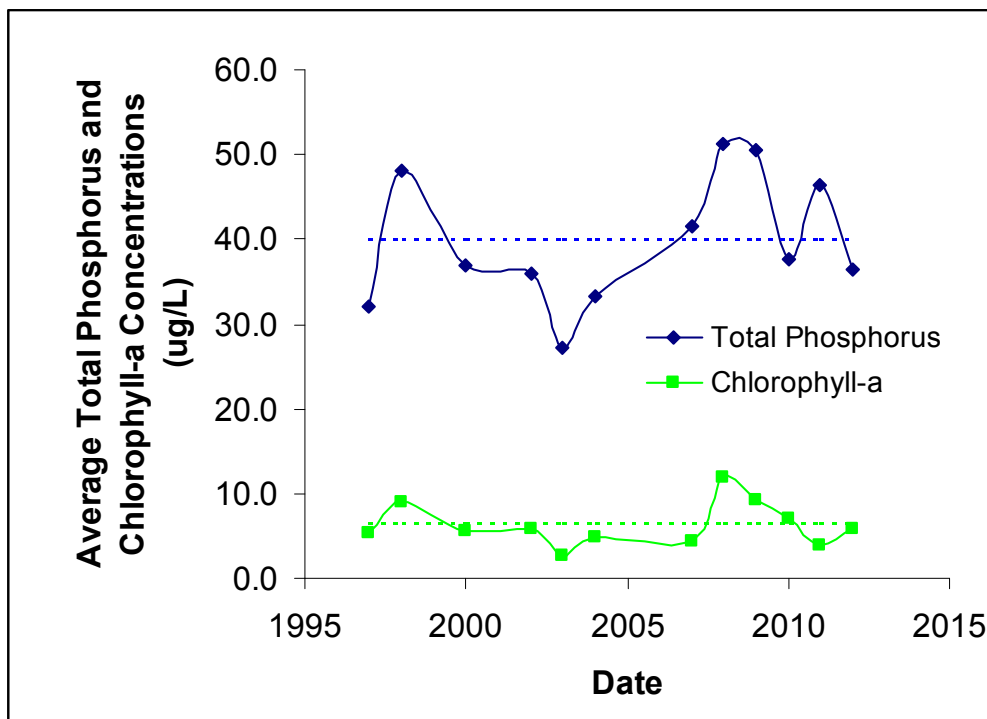


Figure 6 – Historical concentrations of total phosphorus and chlorophyll-a compared to their averages (dashed lines) measured from 1997-2012.

Table 1 – Average Secchi disk depth and water chemistry values for Laurier Lake. Previous years averages are provided for comparison.

Parameter	1978	1980	1987	1997	1998	2000	2002	2003	2004	2007	2008	2009	2010	2011	2012
TP (µg/L)	/	/	/	32.0	48.0	37.0	36.0	27.2	33.2	41.6	51.2	50.5	37.6	46.4	36.4
TDP (µg/L)	/	/	/	/	/	/	15	15	18	22	18.8	20.5	16.4	20.6	19.4
Chlorophyll- <i>a</i> (µg/L)	/	/	/	5.3	8.9	5.5	5.8	2.56	4.9	4.29	11.93	9.13	6.96	3.798	5.85
Secchi depth (m)	/	1.30	1.20	4.60	1.30	1.80	2.50	4.36	3.17	2.40	1.30	2.00	1.80	4.00	3.10
TKN (µg/L)	/	/	/	/	/	/	2.5	2434	2646	2212	2714	2755	2614	2.462	2152
NO ₂ and NO ₃ (µg/L)	<50	50	<1	/	/	/	3.8	211	6.7	5	6	5.75	9.6	6.9	3.4
NH ₃ (µg/L)	/	/	/	/	/	/	23	40.8	74.4	46.2	39.2	39.3	33.2	50.4	33
DOC (mg/L)	/	/	/	/	/	/	/	/	44.3	37.9	37.9	39	37.5	37.1	32.2
Ca (mg/L)	23	27	19	20	21	13	12	10.3	10.6	16.3	14.5	12.1	12.2	14.1	20.2
Mg (mg/L)	48	54	52	73	81	83	99	106	105.1	97.8	92.9	88.1	98.6	101	84.6
Na (mg/L)	49	45	59	86	92	98	77	127.5	130.3	122.7	120.7	132.3	136	120.3	101.9
K (mg/L)	14	14	17	24	25	25	26	31.25	33.87	32.83	31.9	38	34.47	33.4	31.3
SO ₄ ²⁻ (mg/L)	36	40	41	62	66	73	94	99	103.7	111.7	121.3	135.7	148.7	128	118.3
Cl ⁻ (mg/L)	5	6	9	12	13	15	12	18.4	20.1	19.5	20.2	21.2	22.7	20.5	18.7
CO ₃ (mg/L)	/	/	/	39	62	66	102	112	83.7	86	84.7	70	85	66.8	45
HCO ₃ (mg/L)	/	/	/	493	468	469	515	522	601.3	535.7	544.3	582.3	568	535.8	546.8
pH	/	/	/	8.8	8.9	8	9.2	9.24	9.06	9.11	9.03	9	9.1	9	8.84
Conductivity (µS/cm)	/	/	/	/	/	/	/	/	1196.7	1163.3	1196.7	1246.7	1257	1177	1143.6
Hardness (mg/L)	/	/	/	351	387	376	/	462.5	459	443.3	418.7	392.7	436.3	451	399
TDS (mg/L)	/	/	/	562	598	602	/	764.5	783.7	750.3	754.3	784.3	817	751	690.7
TSS								/	2.33	/	/	/	/	/	2.14
Microcystin (µg/L)	/	/	/	/	/	/	/	/	/	0.53	0.236	0.39	0.174	0.17	
Total Alkalinity (mg/L CaCO ₃)	310	329	360	470	488	493	592	615	633	583	588	594	607.7	551	523.8

Note: TP = total phosphorus, TDP = total dissolved phosphorus, Chl-*a* = chlorophyll-*a*, TKN = total Kjeldahl nitrogen. NO₂₊₃ = nitrate+nitrite, NH₃ = ammonia, Ca = calcium, Mg = magnesium, Na = sodium, K = potassium, SO₄ = sulphate, Cl = chloride, CO₃ = carbonate, HCO₃ = bicarbonate. A forward slash (/) indicates an absence of data.

Table 2 - Concentrations of metals measured in Laurier Lake on July 11th and August 29th 2012. Values shown for 2012 are an average of those dates. The CCME heavy metal Guidelines for the Protection of Freshwater Aquatic Life (unless otherwise indicated) are presented for reference.

Metals (Total Recoverable)	2007	2008	2010	2011	2012	Guidelines
Aluminum µg/L	29.4	9.69	20.65	17.2	7.61	100 ^a
Antimony µg/L	0.137	0.117	0.131	0.1245	0.115	6 ^e
Arsenic µg/L	2.6	3	3.185	2.825	2.435	5
Barium µg/L	20.2	16.95	17.8	19.15	29.6	1000 ^e
Beryllium µg/L	<0.003	<0.003	0.0015	0.00275	0.00975	100 ^{d,f}
Bismuth µg/L	<0.005	0.0051	0.00205	0.0028	0.0067	/
Boron µg/L	175.5	182	188.5	189	221.5	5000 ^{ef}
Cadmium µg/L	0.008	0.0038	0.00425	0.00345	0.00325	0.085 ^b
Chromium µg/L	0.611	0.56	0.441	0.465	0.2955	/
Cobalt µg/L	0.099	0.058	0.07075	0.081	0.05905	1000 ^f
Copper µg/L	0.613	0.555	0.278	2.9	0.6815	4 ^c
Iron µg/L	37.1	15.8	16.855	21.05	9.5	300
Lead µg/L	0.057	0.023	0.0208	0.05535	0.01625	7 ^c
Lithium µg/L	102.9	100.2	114	114.5	111.5	2500 ^g
Manganese µg/L	5.15	7.97	4.125	8.335	13	200 ^g
Molybdenum µg/L	0.661	0.587	0.8645	0.7775	0.5875	73 ^d
Nickel µg/L	0.275	0.127	0.12845	0.199	0.0025	150 ^c
Selenium µg/L	0.547	0.372	0.416	0.312	0.302	1
Silver µg/L	<0.003	0.0086	0.001425	0.043125	0.00235	0.1
Strontium µg/L	84.5	62.9	58.85	72.35	114.5	/
Thallium µg/L	<0.001	0.0024	0.00115	0.001275	0.000425	0.8
Thorium µg/L	<0.01	0.017	0.01245	0.0379	0.01295	/
Tin µg/L	<0.06	<0.03	0.015	0.015	0.0337	/
Titanium µg/L	1.24	1.36	1.38	0.7535	0.69	/
Uranium µg/L	0.811	0.808	1.085	0.875	0.6825	100 ^e
Vanadium µg/L	0.742	0.512	0.807	0.563	0.4275	100 ^{f,g}
Zinc µg/L	1.53	0.916	0.326	1.0925	1.031	30

Values represent means of total recoverable metal concentrations.

^a Based on pH ≥ 6.5; calcium ion concentrations [Ca⁺²] ≥ 4 mg/L; and dissolved organic carbon concentration [DOC] ≥ 2 mg/L.

^b Based on water Hardness of 300 mg/L (as CaCO₃)

^c Based on water hardness > 180mg/L (as CaCO₃)

^d CCME interim value.

^e Based on Canadian Drinking Water Quality guideline values.

^f Based on CCME Guidelines for Agricultural use (Livestock Watering).

^g Based on CCME Guidelines for Agricultural Use (Irrigation).

A forward slash (/) indicates an absence of data or guidelines.

A BRIEF INTRODUCTION TO LIMNOLOGY

INDICATORS OF WATER QUALITY:

Water samples are collected in LakeWatch to determine the chemical characteristics that characterize general water quality. Though not all encompassing, the variables collected in LakeWatch are sensitive to human activities in watersheds that can cause degraded water quality. For example, nutrients such as phosphorus and nitrogen are important determinants of lake productivity. The concentrations of these nutrients in a lake are impacted (typically elevated) by land use changes such as increased crop production or livestock grazing. Elevated nutrient concentrations can cause increases in undesirable algae blooms resulting in low dissolved oxygen concentrations, degraded habitat for fish and noxious smells. A large increase in nutrients over time may also indicate sewage inputs which in turn may result in other human health concerns associated with bacteria or the protozoan *Cryptosporidium*.

TEMPERATURE AND MIXING:

Water temperature in a lake dictates the behavior of many chemical parameters responsible for water quality. Heat is transferred to a lake at its surface and slowly moves downward depending on water circulation in the lake. Lakes with a large surface area or a small volume tend to have greater mixing due to wind. In deeper lakes, circulation is not strong enough to move warm water to depths typically greater than 4 or 5 m and as a result cooler denser water remains at the bottom of the lake.

As the difference in temperature between warm surface and cold deeper water increases, two distinct layers are formed. Limnologists call these layers of water the **epilimnion** at the surface and the **hypolimnion** at the bottom. The layers are separated by a transition layer known as the **metalimnion** which contains the effective wall separating top and bottom waters called a **thermocline**. A thermocline typically occurs when water temperature changes by more than one degree within one meter depth. The hypolimnion and epilimnion do not mix, nor do elements such as oxygen supplied at the surface move downward into the hypolimnion. In the fall, surface waters begin to cool and eventually reach the same temperature as hypolimnetic water. At this point the water mixes from top to bottom in what is often called a **turnover** event. Surface water cools further as ice

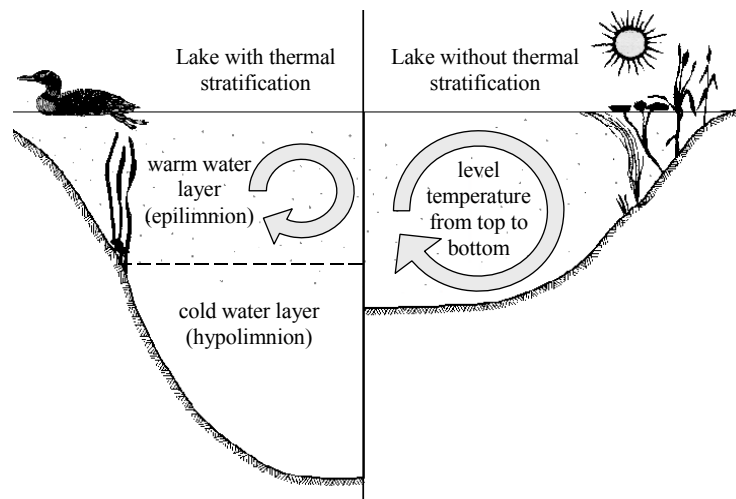


Figure A: Difference in the circulation of the water column depending on thermal stratification.

forms and again a thermocline develops this time with 4° C water at the bottom and near 0° C water on the top.

In spring another turnover event occurs when surface waters warm to 4° C. Lakes with this mixing pattern of two stratification periods and two turnover events are called **dimictic** lakes. In shallower lakes, the water column may mix from top to bottom most of the ice-free season with occasional stratification during periods of calm warm conditions. Lakes that mix frequently are termed **polymictic** lakes. In our cold climate, many shallow lakes are **cold monomictic** meaning a thermocline develops every winter, there is one turnover event in spring but the remainder of the ice free season the lake is polymictic.

DISSOLVED OXYGEN:

Oxygen enters a lake at the lake surface and throughout the water column when produced by photosynthesizing plants, including algae, in the lake. Oxygen is consumed within the lake by respiration of living organisms and decomposition of organic material in the lake sediments. In lakes that stratify (see temperature above), oxygen that dissolves into the lake at the surface cannot mix downward into the hypolimnion. At the same time oxygen is depleted in the hypolimnion by decomposition. The result is that the hypolimnion of a lake can become **anoxic**, meaning it contains little or no dissolved oxygen. When a lake is frozen, the entire water column can become anoxic because the surface is sealed off from the atmosphere. Winter anoxic conditions can result in a fish-kill which is particularly common during harsh winters with extended ice-cover. Alberta Surface Water Quality Guidelines suggest dissolved oxygen concentrations (in the epilimnion) must not decline below 5 mg•L⁻¹ and should not average less than 6.5 mg•L⁻¹ over a seven-day period. However, the guidelines also require that dissolved oxygen concentrations remain above 9.5 mg•L⁻¹ in areas where early life stages of aquatic biota, particularly fish, are present.

GENERAL WATER CHEMISTRY:

Water in lakes always contains substances that have been transported by rain and snow or have entered the lake in groundwater and inflow streams. These substances may be dissolved in the water or suspended as particles. Some of these substances are familiar minerals, such as sodium and chloride, which when combined form table salt, but when dissolved in water separate into the two electrically charged components called **ions**. Most dissolved substances in water are in ionic forms and are held in solution due to the polar nature of the water molecule. **Hydrophobic** (water-fearing) compounds such as oils contain little or no ionic character, are non-polar and for this reason do not readily dissolve in water. Although hydrophobic compounds do not readily dissolve, they can still be transported to lakes by flowing water. Within individual lakes, ion concentrations vary from year to year depending on the amount and mineral content of the water entering the lake. This mineral content can be influenced by the amount of precipitation and other climate variables as well as human activities such as fertilizer and road salt application.

PHOSPHORUS AND NITROGEN:

Phosphorus and nitrogen are important nutrients limiting the growth of algae in Alberta lakes. While nitrogen usually limits agricultural plants, phosphorus is usually in shortest supply in lakes. Even a slight increase of phosphorus in a lake can, given the right conditions, promote algal blooms causing the water to turn green in the summer and impair recreational uses. When pollution originating from livestock manure and human sewage enters lakes not only are the concentrations of phosphorus and nitrogen increased but nitrogen can become a limiting nutrient which is thought to cause blooms of toxic algae belonging to the cyanobacteria. Not all cyanobacteria are toxic, however, the blooms can form decomposing mats that smell and impair dissolved oxygen concentrations in the lake.

CHLOROPHYLL-A:

Chlorophyll *a* is a photosynthetic pigment that green plants, including algae, possess enabling them to convert the sun's energy to living material. Chlorophyll *a* can be easily extracted from algae in the laboratory. Consequently, chlorophyll *a* is a good estimate of the amount of algae in the water. Some highly productive lakes are dominated by larger aquatic plants rather than suspended algae. In these lakes, chlorophyll *a* and nutrient values taken from water samples do not include productivity from large aquatic plants. The result, in lakes like Chestermere which are dominated by larger plants known as macrophytes, can be a lower trophic state than if macrophyte biomass was included. Unfortunately, the productivity and nutrient cycling contributions of macrophytes are difficult to sample accurately and are therefore not typically included in trophic state indices.

SECCHI DISK TRANSPARENCY :

Lakes that are clear are more attractive for recreation, whereas those that are turbid or murky are considered by lake users to have poor water quality. A measure of the transparency or clarity of the water is performed with a Secchi disk with an alternating black and white pattern. To measure the clarity of the water, the Secchi disk is lowered down into the water column and the depth where the disk disappears is recorded. The Secchi depth in lakes with a lot of algal growth will be small while the Secchi depth in lakes with little algal growth can be very deep. However, low Secchi depths are not caused by algal growth alone. High concentrations of suspended sediments, particularly fine clays or glacial till, are common in plains or mountain reservoirs of Alberta. Mountain reservoirs may have exceedingly low Secchi depths despite low algal growth and nutrient concentrations.

The euphotic zone or the maximum depth that light can penetrate into the water column for actively growing plants is calculated as twice the Secchi depth. Murky waters, with shallow Secchi depths, can prevent aquatic plants from growing on the lake bottom. Conversely, aquatic plants can ensure lakes have clear water by reducing shoreline erosion and stabilizing lake bottom sediments. In Alberta, many lakes are shallow and

bottom sediments contain high concentrations of nutrients. Without aquatic plants, water quality may decline in these lakes due to murky, sediment laden water and excessive algal blooms. Maintaining aquatic plants in certain areas of a lake is often essential for ensuring good water clarity and a healthy lake as many organisms, like aquatic invertebrates and insects, depend on aquatic plants for food and shelter.

TROPHIC STATE:

Trophic state is classification of lakes into four categories of fertility and is a useful index for rating and comparing lakes. From low to high nutrient and algal biomass (as chlorophyll) concentrations, the trophic states are; **oligotrophic**, **mesotrophic**, **eutrophic** and **hypereutrophic** (Table 2).

A majority of lakes in Alberta contain naturally high levels of chlorophyll *a* (8 to 25 µg/L) due to our deep fertile soils. These lakes are usually considered fertile and are termed eutrophic. The nutrient and algal biomass concentrations that define these categories are shown in the following table, a figure of Alberta lakes compared by trophic state can be found on the ALMS website.

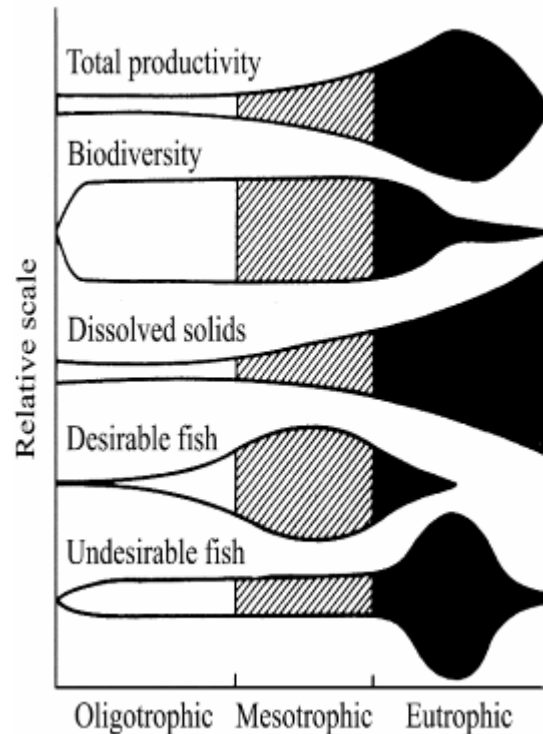


Figure B: Suggested changes in various lake characteristics with eutrophication. From “Ecological Effects of Wastewater”, 1980.

Table A - Trophic status classification based on lake water characteristics.

Trophic state	Total Phosphorus (µg•L ⁻¹)	Total Nitrogen (µg•L ⁻¹)	Chlorophyll a (µg•L ⁻¹)	Secchi Depth (m)
Oligotrophic	< 10	< 350	< 3.5	> 4
Mesotrophic	10 – 30	350 - 650	3.5 - 9	4 - 2
Eutrophic	30 – 100	650 - 1200	9 - 25	2 - 1
Hypereutrophic	> 100	> 1200	> 25	< 1