

The Lakes of Lakeland: An Inspiring Wilderness



Alberta Lake Management Society

September 29, 2017

Carolyn Campbell



Alberta Wilderness Association

Alberta Wilderness Association

Protect
representative
wilderness

Improve land use/
watershed
management

*“Defending Wild Alberta
Through Awareness and
Action”*



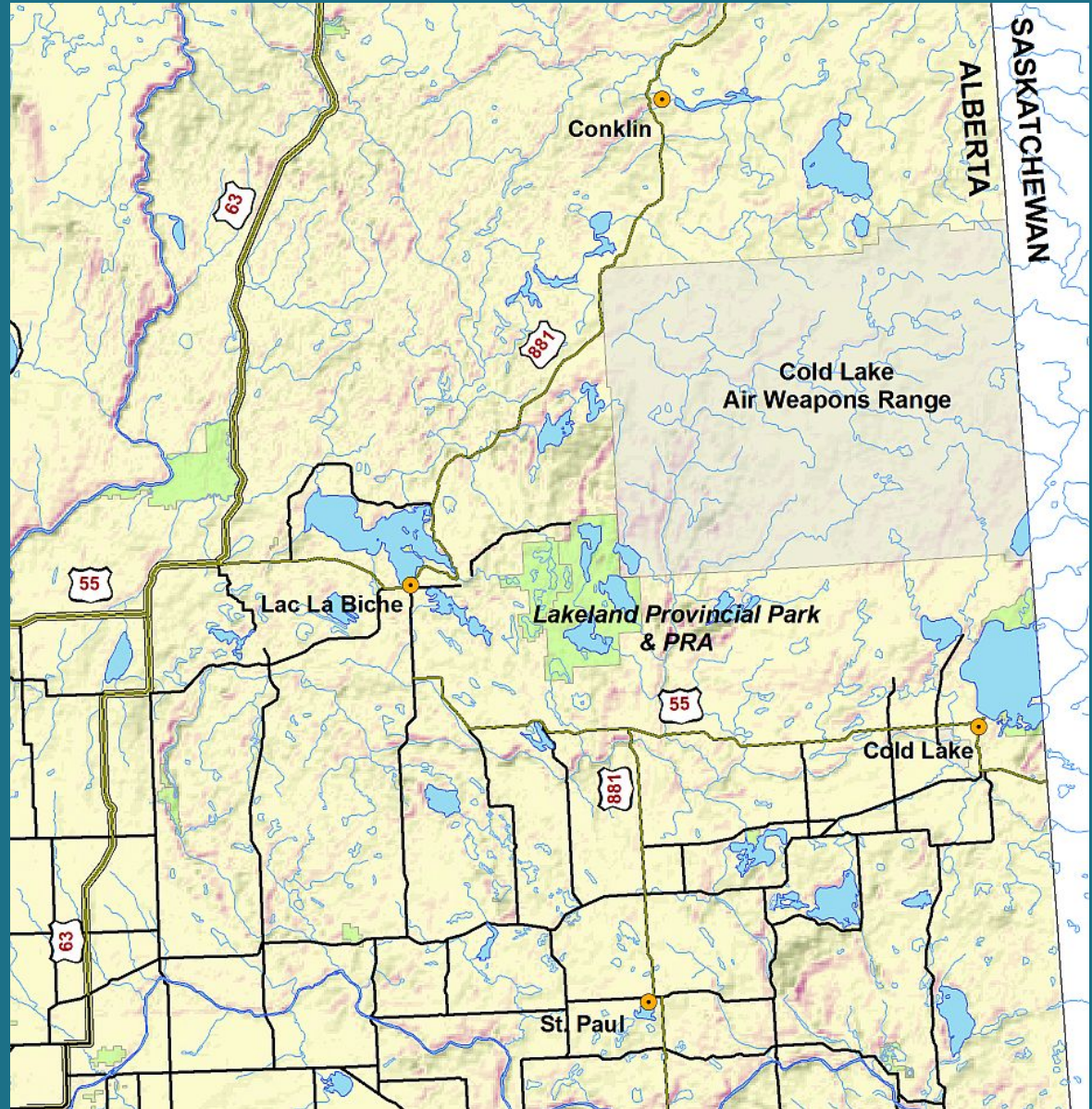
Outline

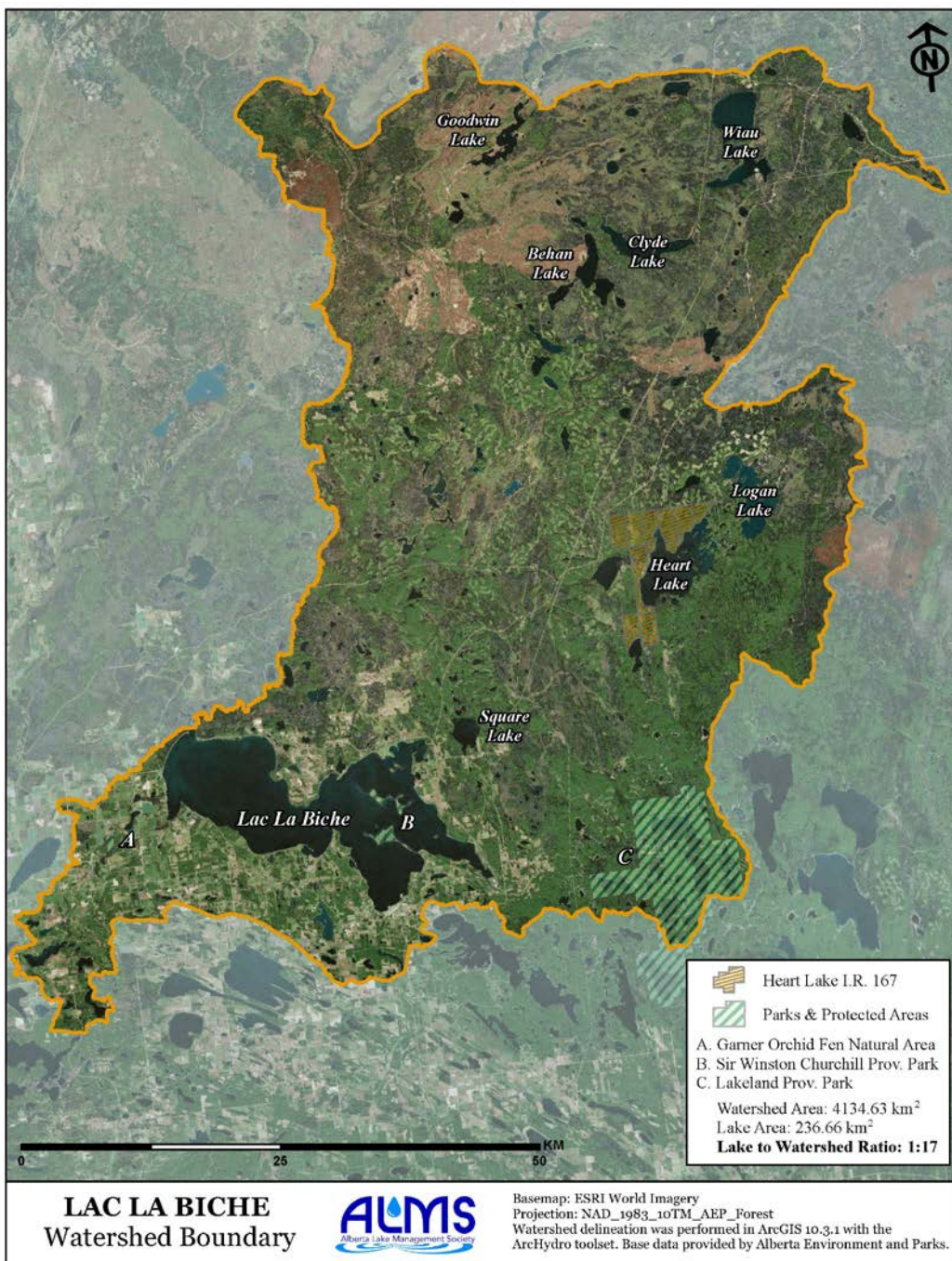
Features

Conservation
History

Pressures

Opportunities

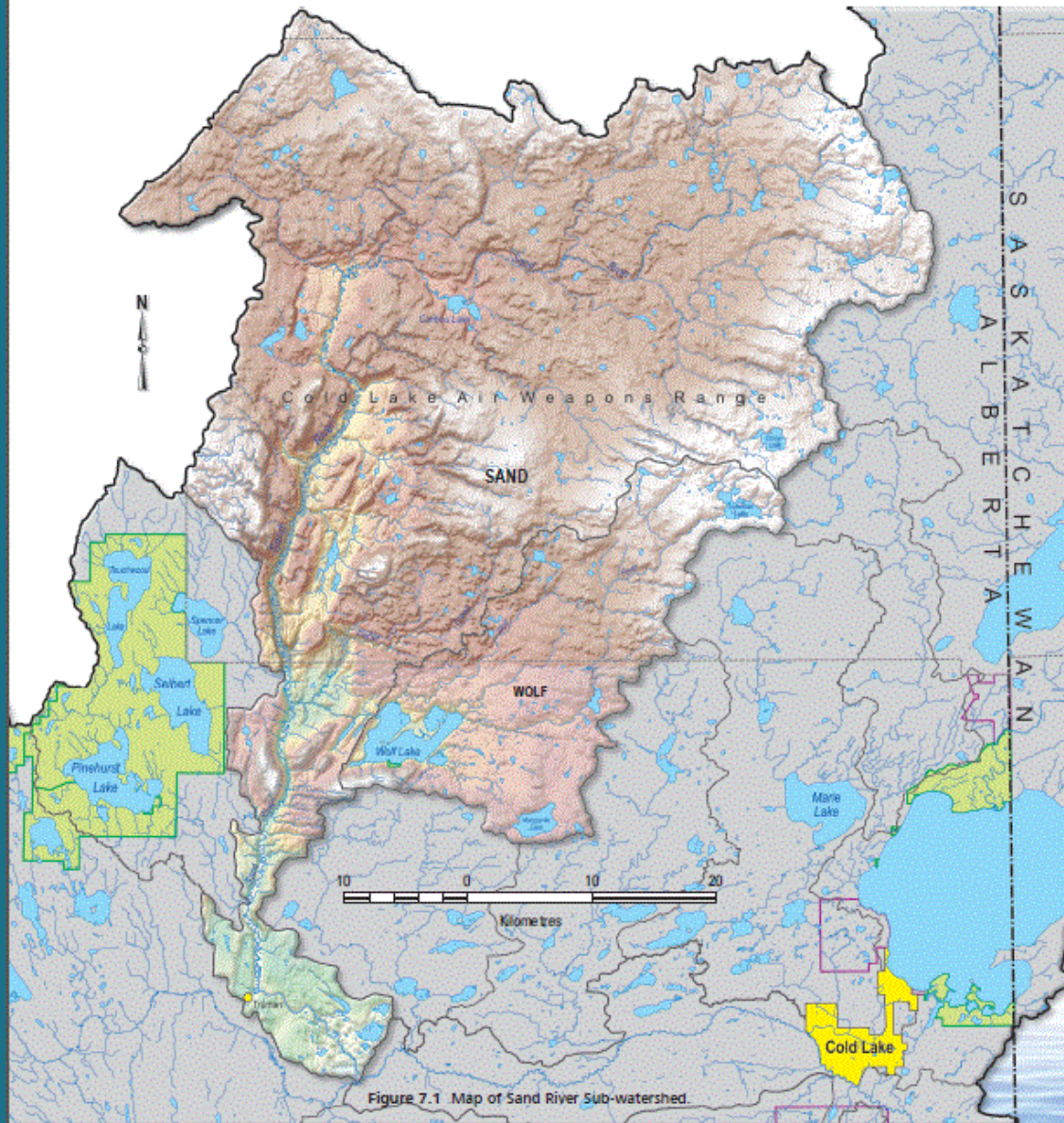




Watershed Divide:
Athabasca –Slave–Mackenzie

(ALMS map of Lac La Biche
sub-watershed)

Map: Alberta Lake Management Society,
2016.



Watershed Divide:
Beaver–Churchill

(BRWA map of
Sand–Wolf–Lakeland
sub-watersheds)

Map: Beaver River Watershed Alliance,
2013



Photo: G. Wirun

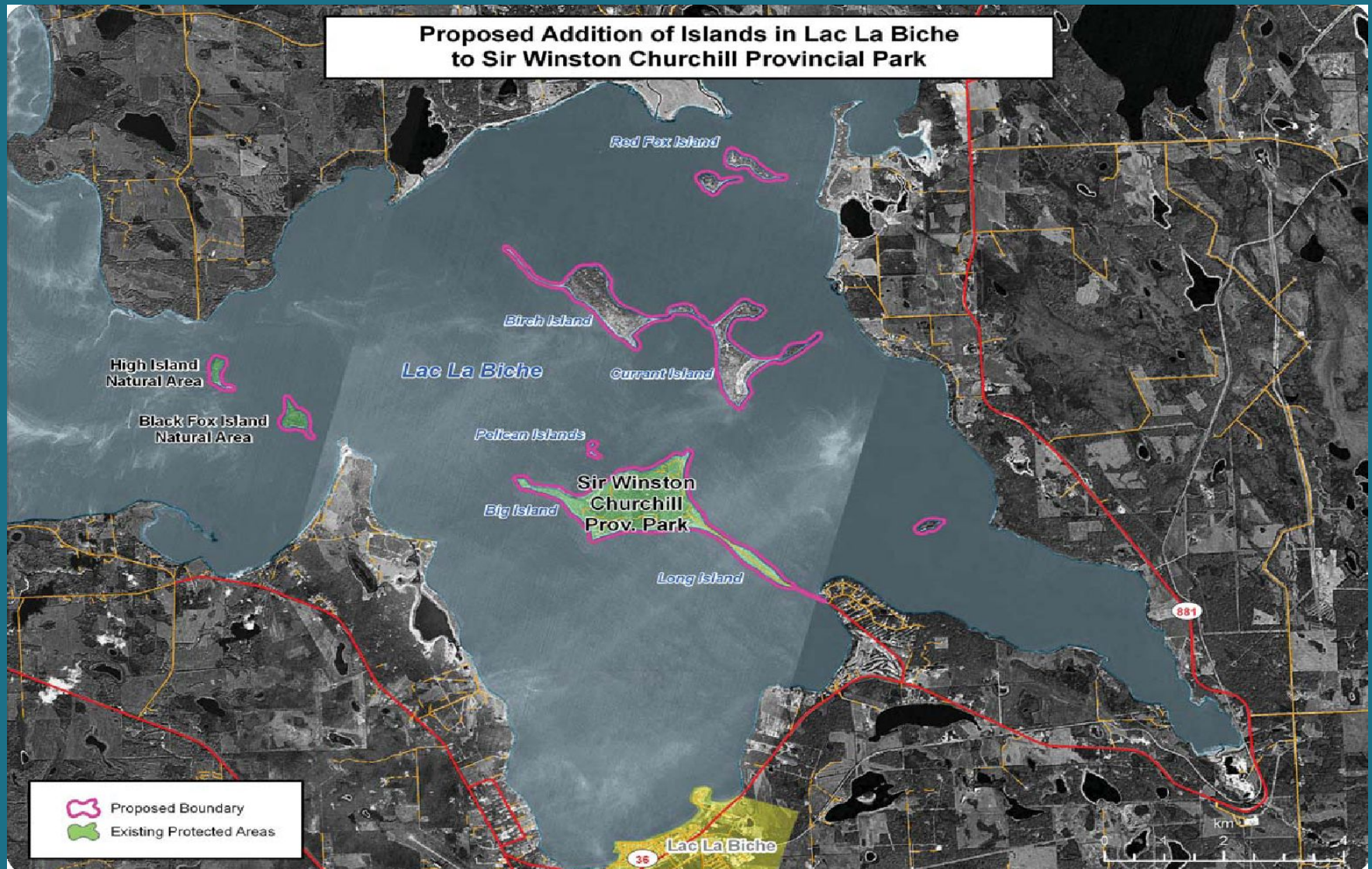


Photo: G. Wirun



Photo: M. Mathewson

**Proposed Addition of Islands in Lac La Biche
to Sir Winston Churchill Provincial Park**



**Sir Winston Churchill Prov. Park, Lac La Biche east basin:
2 km² 1952, to 6 km² in 2010**

Cold Lake Provincial Park

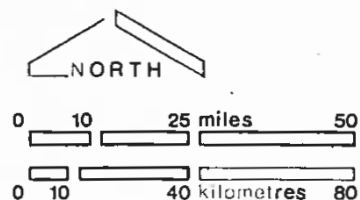
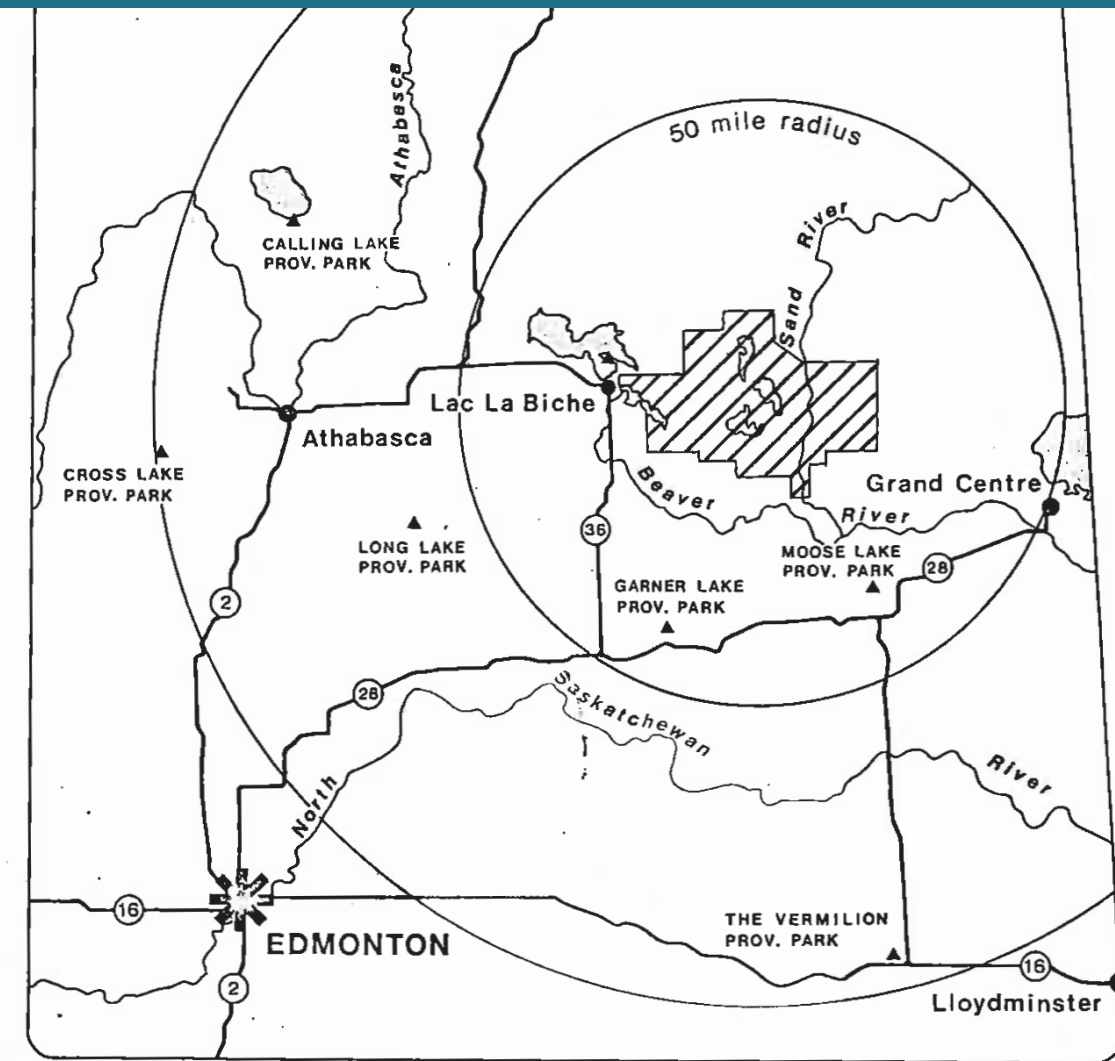
58 km²

Established 1976

Over 200 bird species
Sport fishing, boating,
camping
First Nations traditional use



1976 Alberta Parks reservation from Beaver Lake to Wolf Lake



PROPOSED LAKELAND PROVINCIAL PARK

 Parks reservation

MAP 1

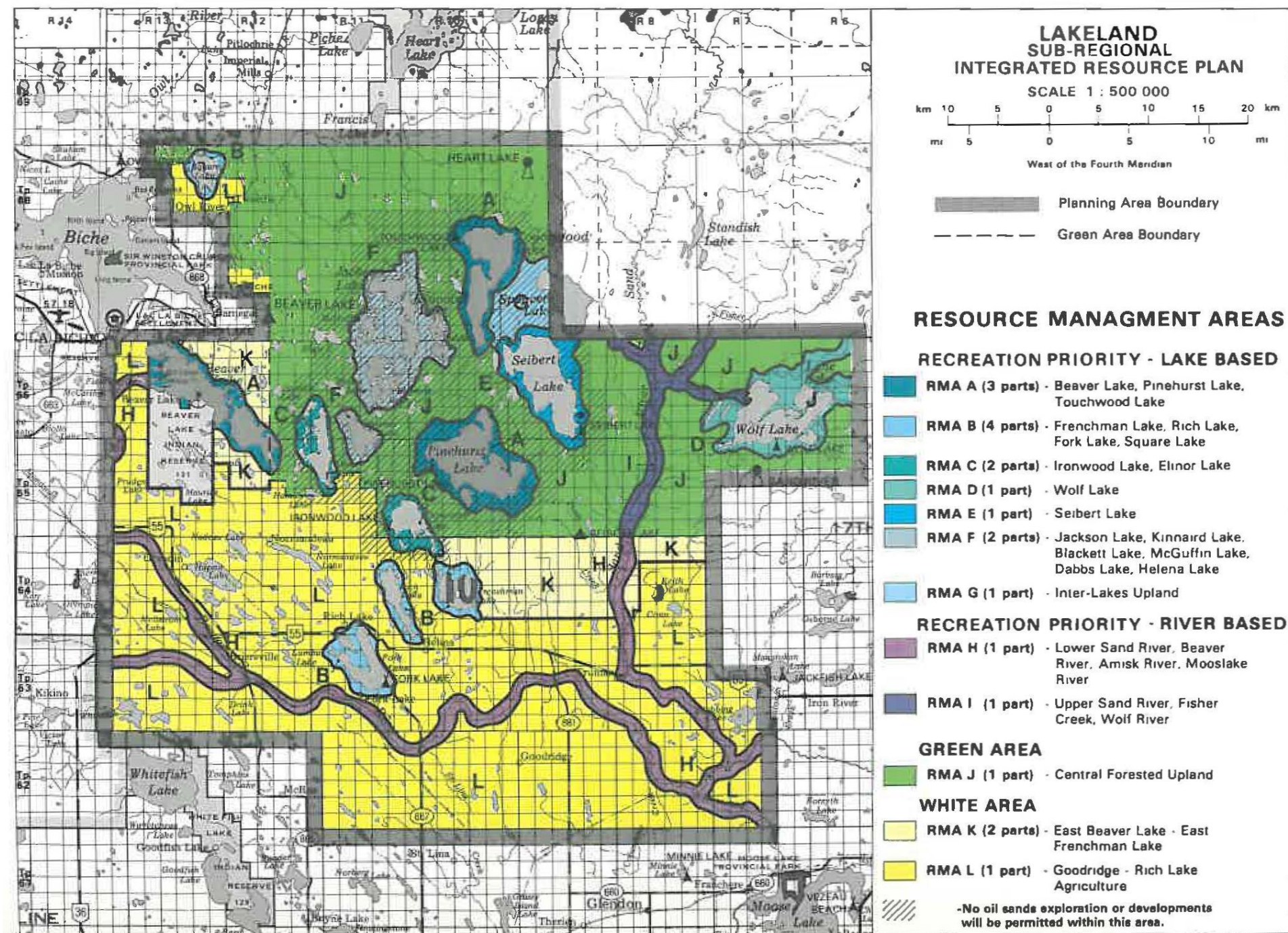
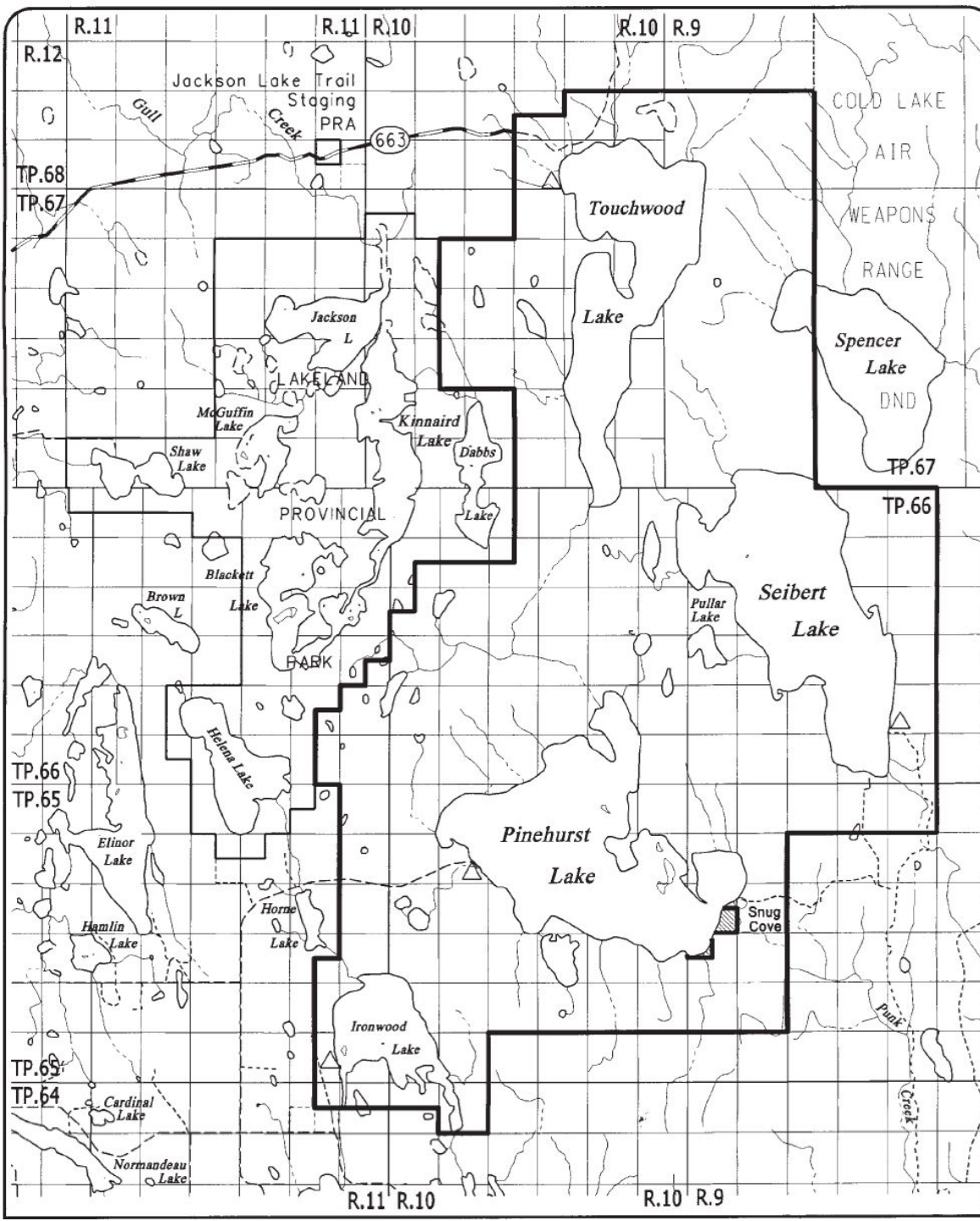


Fig.2 Resource Management Areas



Lakeland
Provincial
Park
(147 km²)

and Provincial
Recreation Area
(443 km²)

Established 1992



Photo: M. Mathewson



Photo: M. Mathewson



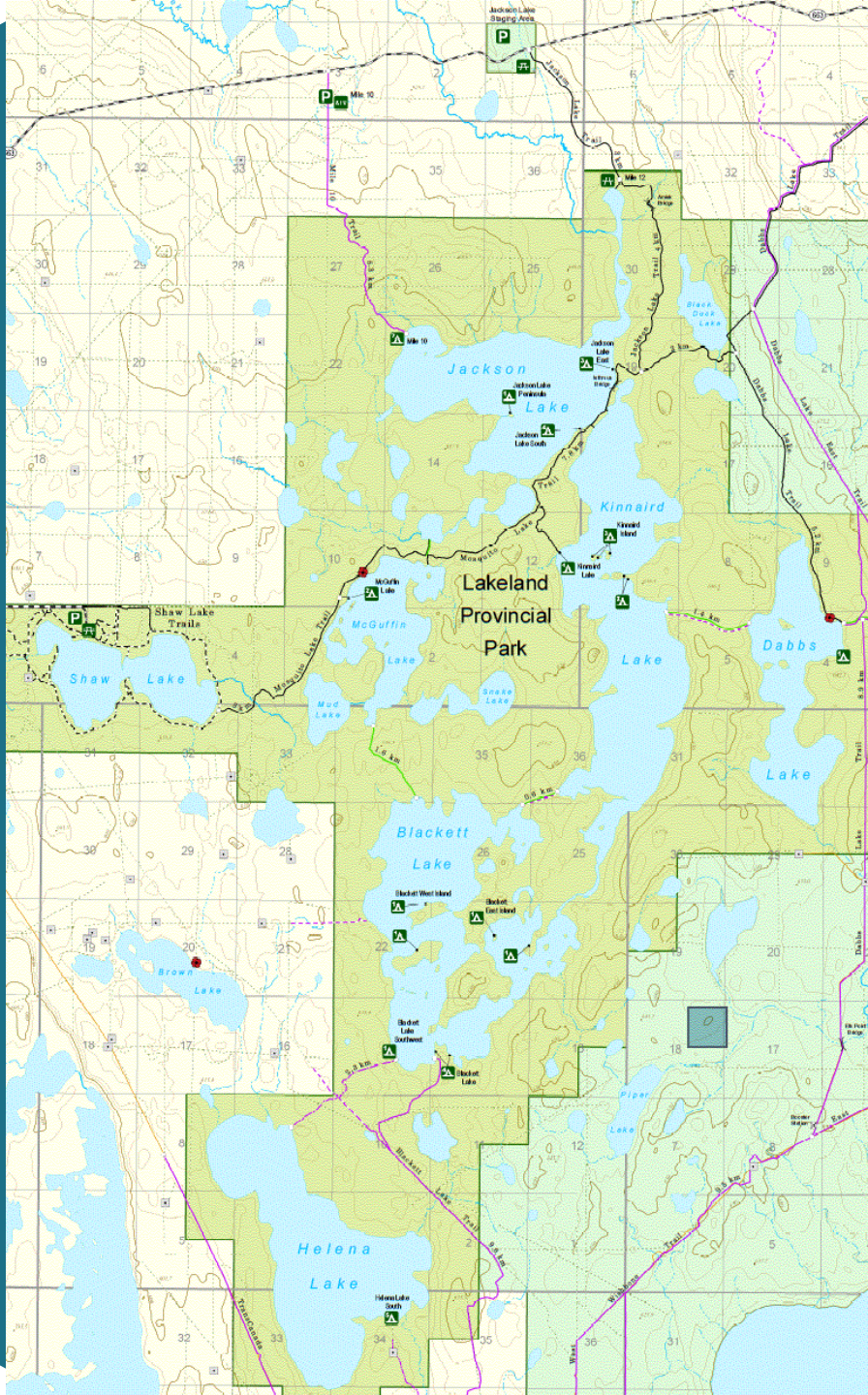
Photo: AWA



*Touchwood Lake peatland area, Lakeland.
Photos: AWA.*



Photo: A. Paul



Lakeland Provincial Park

Alberta's only
backcountry canoe
circuit



Photo: AWA



Photo: AWA



Challenges

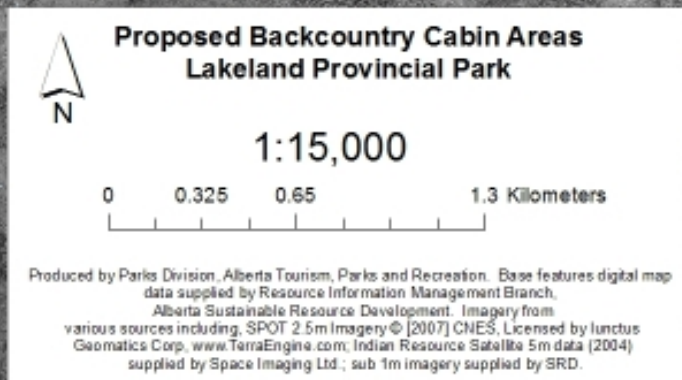
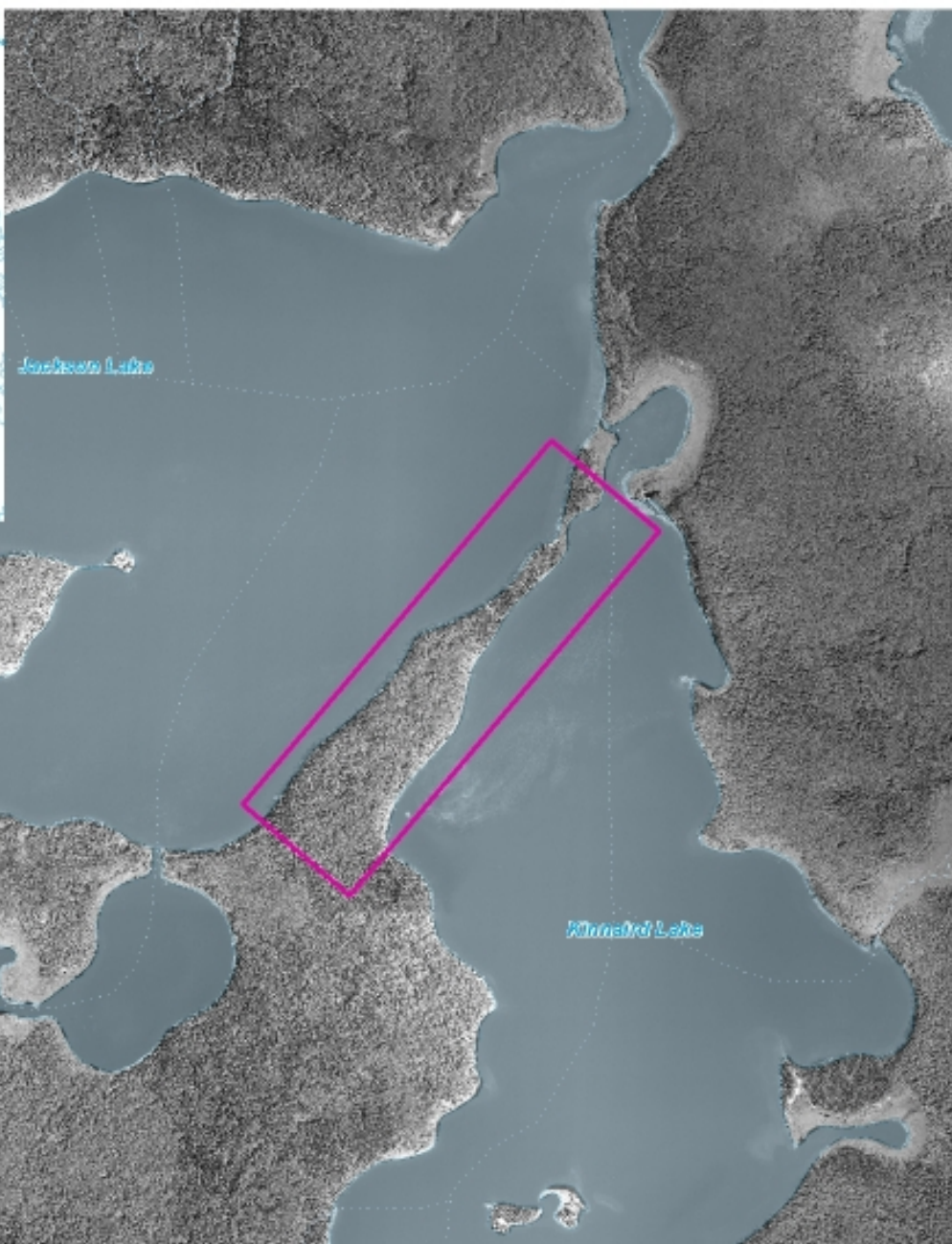
Photo: G. Wirun



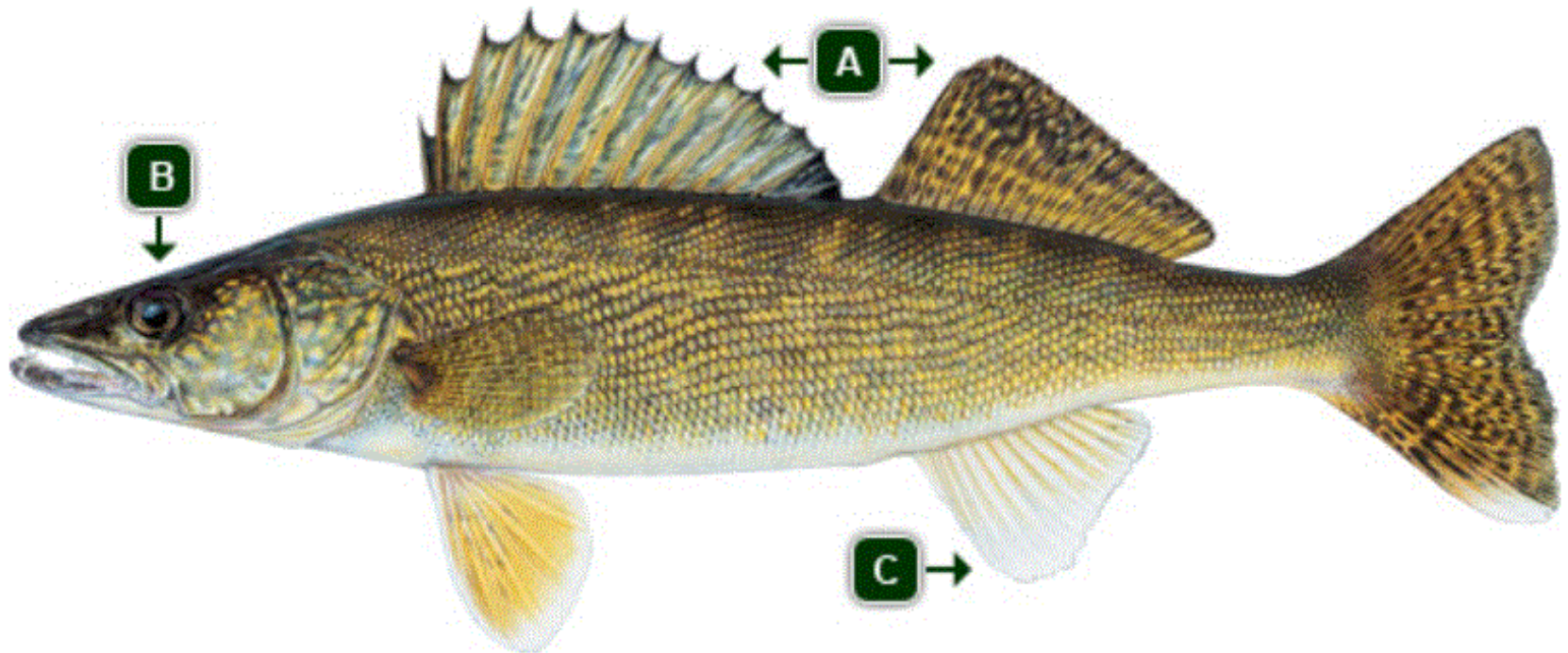
Photo: G. Wirun



**Sir Winston Churchill Prov. Park comfort cabins,
opened 2015**



WALLEYE IN ALBERTA (SANDER VITREUS)



Alberta has 300,000 anglers
800 lakes with native sport fish
300 waters stocked with non-native fish

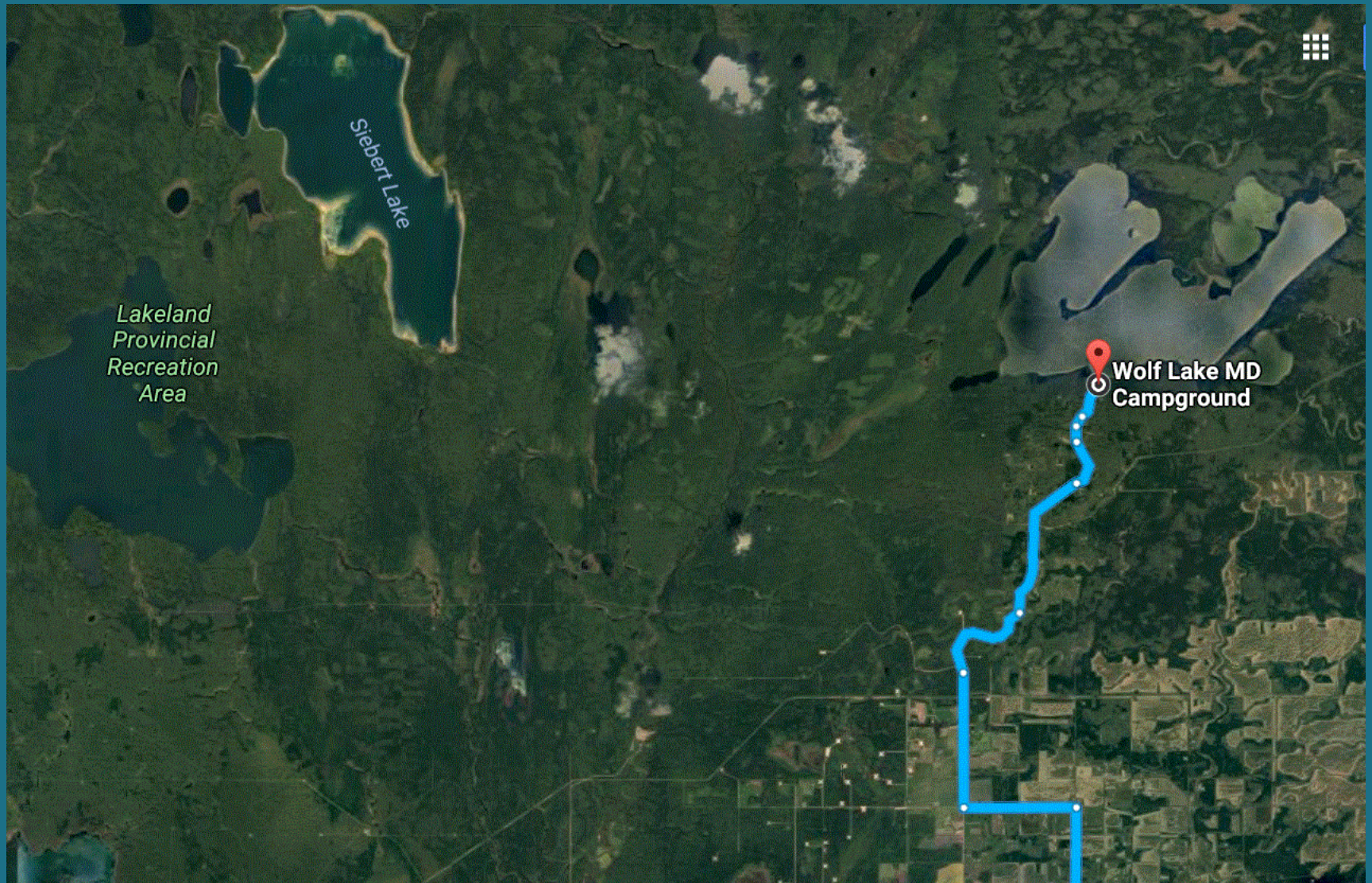


Image: Google maps, retrieved Sept. 2017



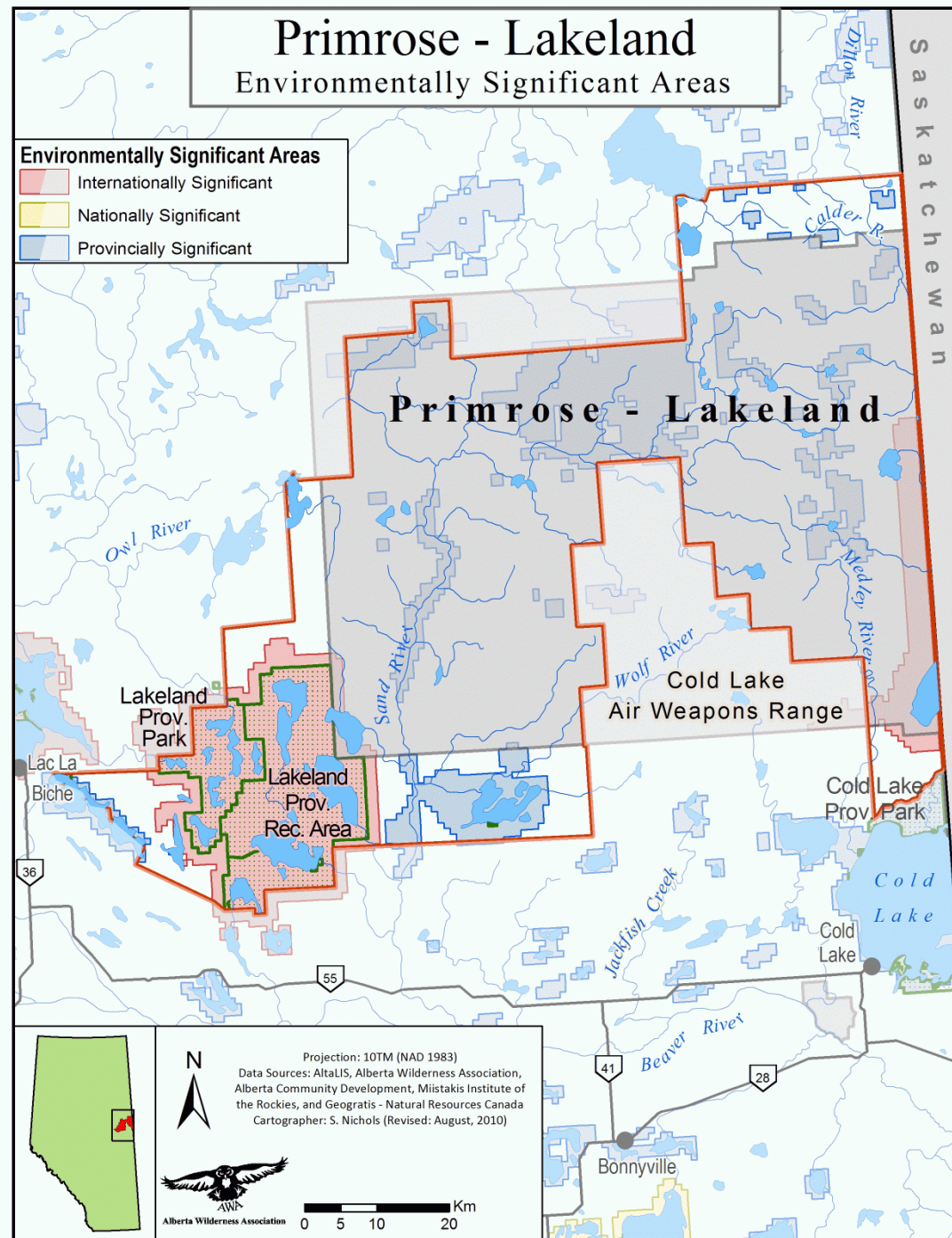
Photo: G. Wirun

AWA Vision:

Protect remaining
5400 km²
in Primrose–Lakeland

Ecological priority
Restore and maintain
healthy forests,
wetlands, waters

Sustainable
recreation, eco-
tourism for gateway
communities

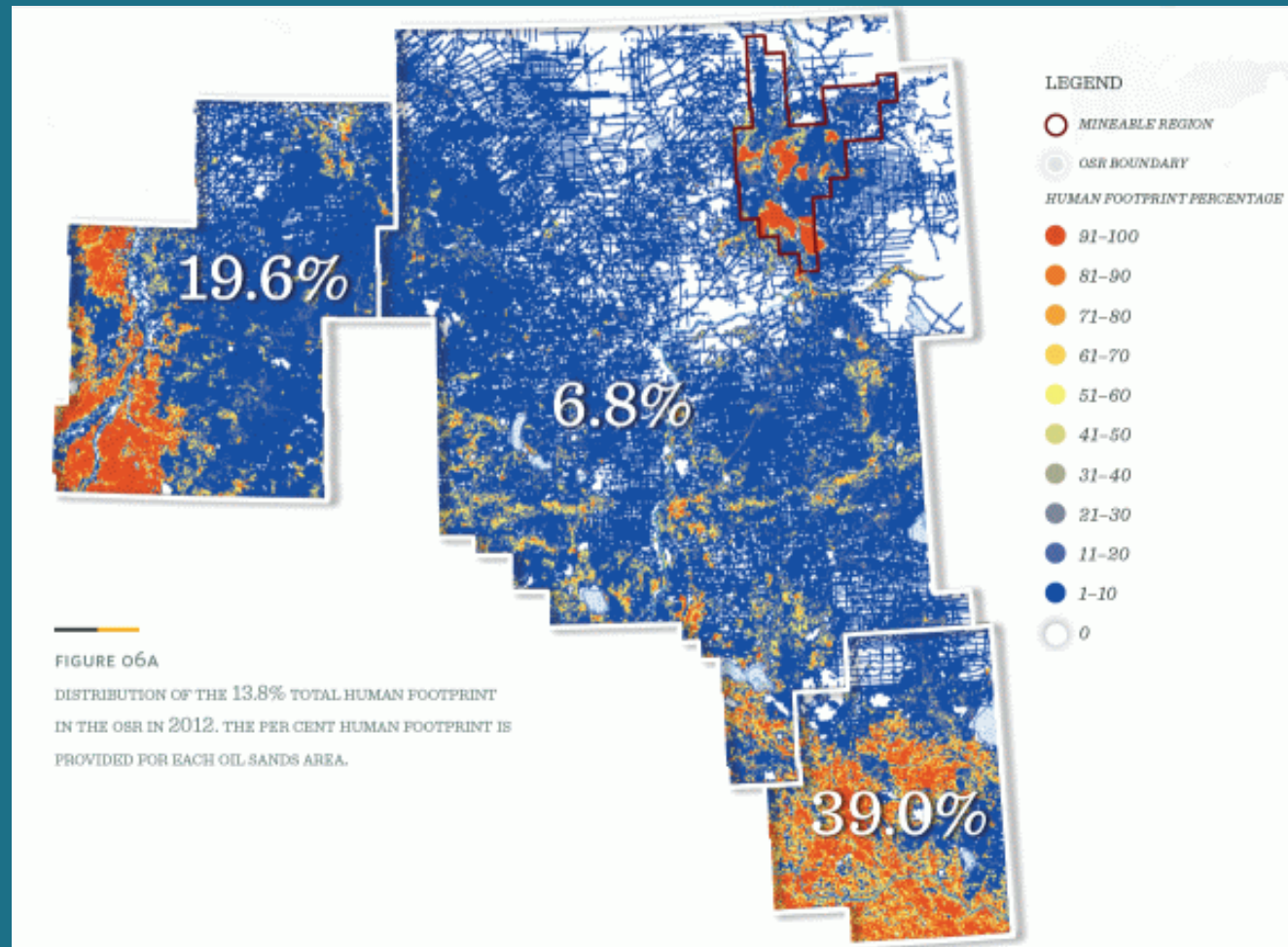


Habitat and Water Fragmentation

2012 Human Footprint in Oil Sands Region

Footprint Buffer	% OS Region
0 m	14%
50 m	33%
200 m	63%
2 km	97%

Protected Areas:
AB Parks 4.6%
PLUZ 1.6%

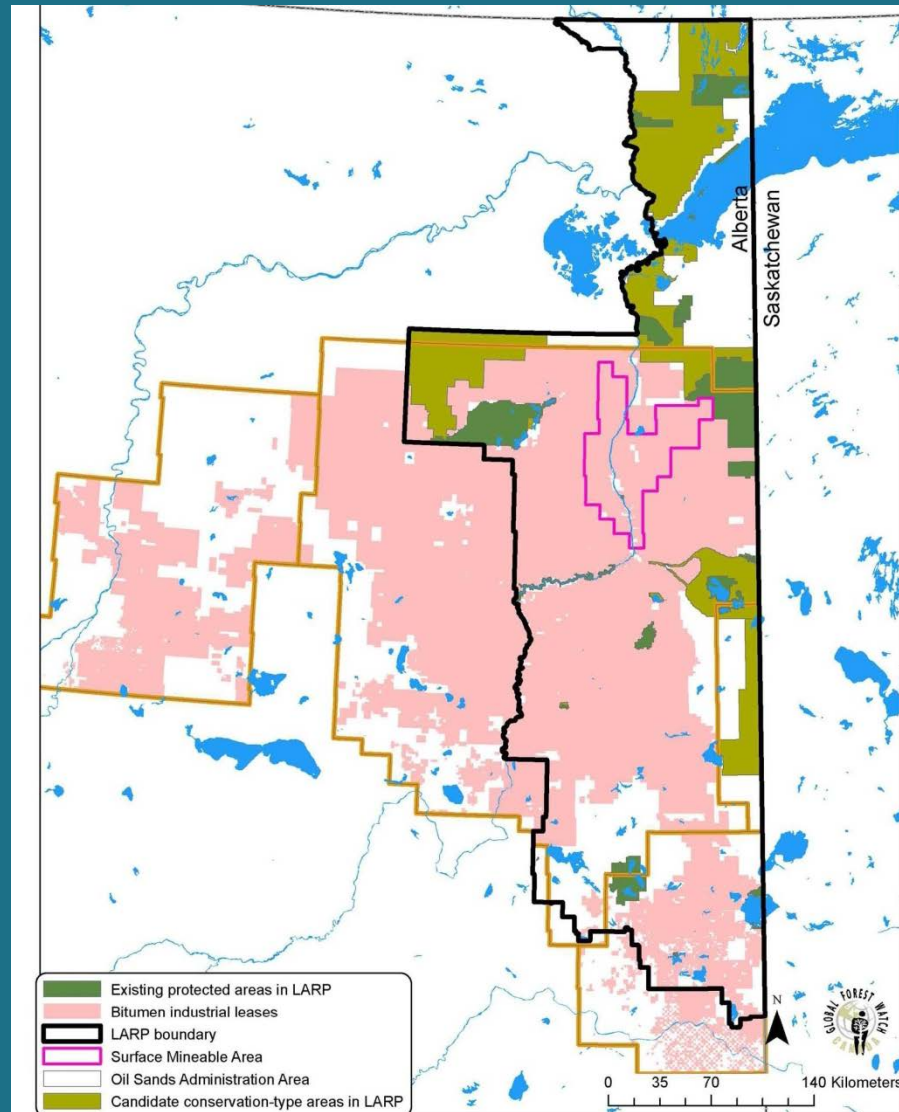


Protected areas major gaps

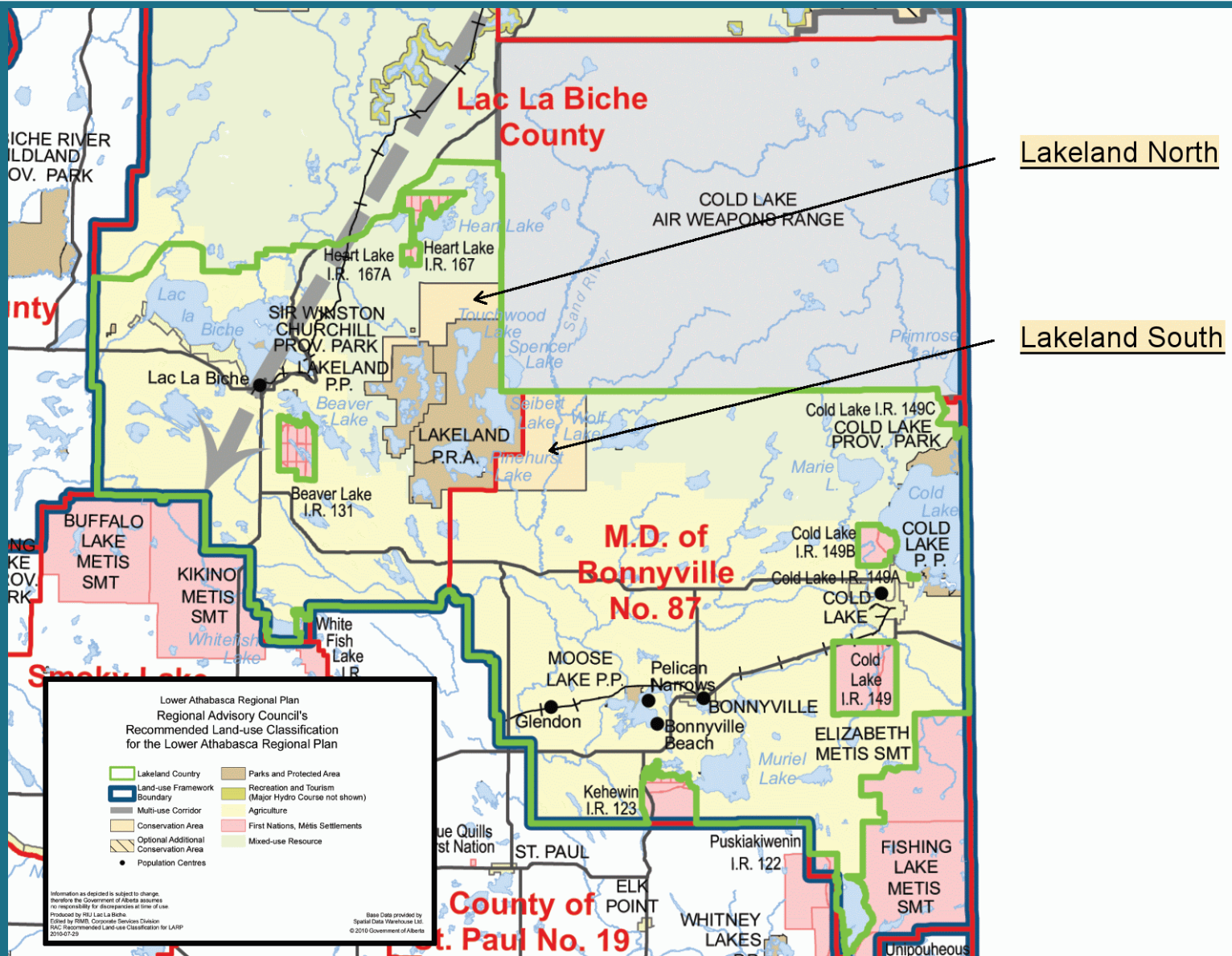
Omits representative ecosystems and environmentally significant areas in Oil Sands Area

(Note: final 2012 LARP protected areas were slightly changed from this 2011 map)

Map: Global Forest Watch Canada, September 2011



Map 2. Existing conservation-type areas and candidate conservation-type areas announced by the Alberta Government for the draft Lower Athabasca Regional Plan.



For Lower Athabasca Regional Plan 2017 Review:
Two areas proposed by LARP Regional Advisory Council, 2010



Photo: S. Coulson



Photo: G. Wirun, 2008



Photo: G. Wirun



Alberta Wilderness Association

For more information:
ccampbell@abwild.ca

www.albertawilderness.ca

Special thanks to:
Images Alberta
Camera Club!



Photo: S. Coulson