

*Your Playground of Opportunity*



**Lac La Biche County**  
welcoming by nature.

# Environmental Services

## Riparian and Wetland Management

ALMS Conference

Lac La Biche

September 29-30, 2017

## Riparian Areas in Lac La Biche County

- Riparian Area: Lush vegetated lands adjacent to streams, rivers, lakes and wetlands, where the vegetation and soils are strongly influenced by the presence of water.
- Existing policies and bylaws in place:
  - Riparian Setback Matrix Model (RSMM)
    - 2007
    - Guidance tool for development at time of subdivision
    - Implemented and utilized by the County to date
    - Next steps: include as part of a sustainable development package for developers and home-owners
  - RSMM Policy
    - 2010
    - Corresponds to RSMM tool
    - Next steps: Updating

## Riparian Areas in Lac La Biche County

- Environmental Reserve: Often a titled parcel of land separates a residential or recreational property from the lake. These are referred to as Environmental Reserve (ER) and are to be left in their natural state.
- Existing documents (policies/bylaws) in place:
  - Environmental Reserve Encroachment Policy
    - 2010
    - Developed to correspond to RSMM tool/RSMM Policy
    - Once ER is taken, no encroachments allowed
    - Next steps: Environmental Reserve Encroachment Bylaw (in progress)
  - Environmental Reserve and Municipal Demarcation Policy
    - 2010
    - Guidance for identifying reserve lands via County signage

### ● ENVIRONMENTAL RESERVE

IN ORDER TO PROTECT THE  
RIPARIAN HEALTH AND PRESERVE  
THE LAKE ENVIRONMENT,  
THIS LAND WAS  
DESIGNATED AS  
ENVIRONMENTAL RESERVE.

***ANY ALTERATION OF THIS  
LAND, OR MOTORIZED  
VEHICLE USE IS  
STRICTLY PROHIBITED.***

***FOOT ACCESS ONLY.***

FOR MORE INFORMATION  
CONTACT  
LAC LA BICHE COUNTY



**REMOVAL OF  
THIS SIGN  
IS PROHIBITED**

**Per Lac La Biche County Bylaw 09-007 \$500**

●

## Wetlands in Lac La Biche County

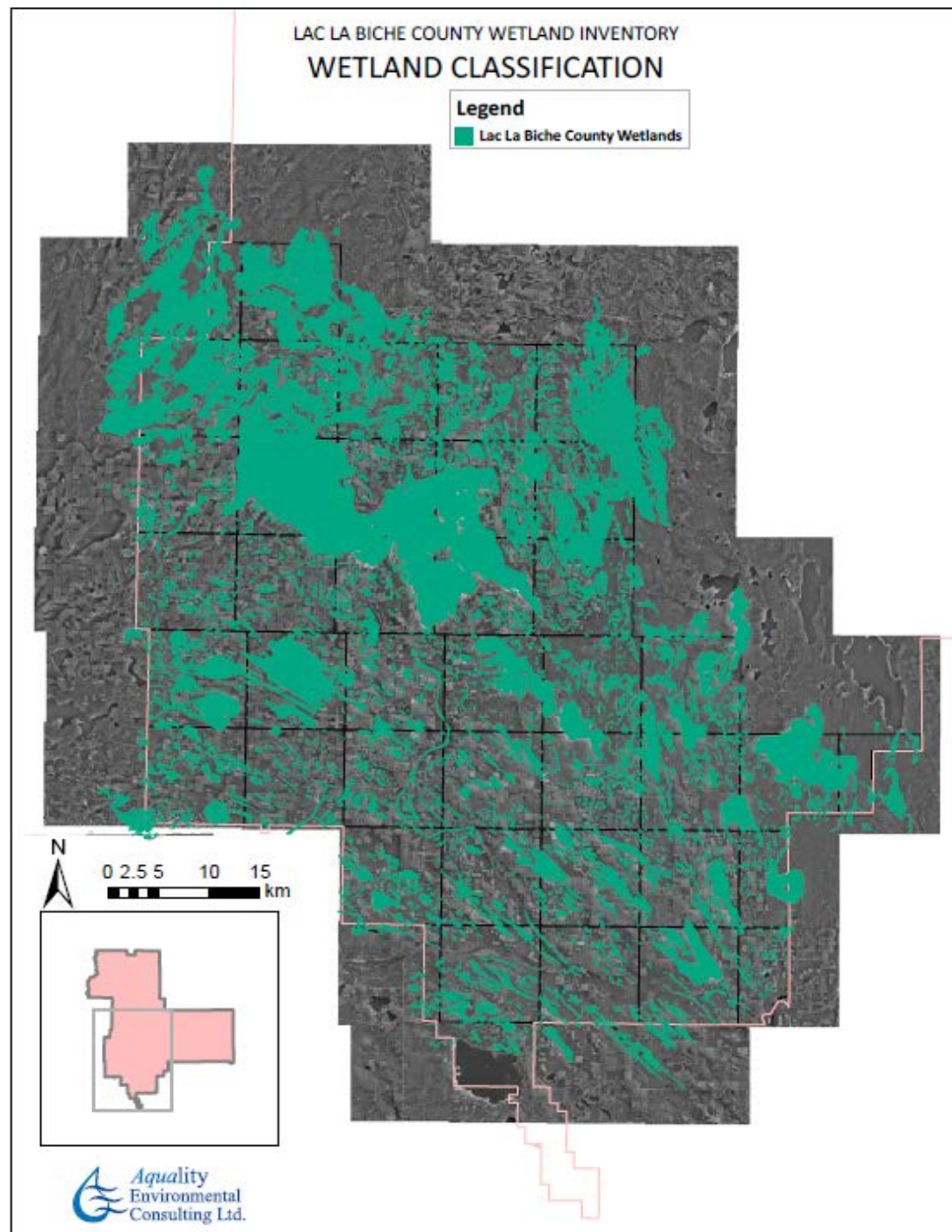
Wetlands are land saturated with water long enough to promote formation of water altered soils, growth of water tolerant vegetation, and various kinds of biological activity that are adapted to the wet environment.

- Approximately 20 per cent of Alberta's surface area is covered by wetlands; more than 90 per cent of these are peatlands (primarily bogs and fens).
- New provincial Wetland Policy in place as of June 2016. Now covers the **green** (unsettled) and **white** (settled) areas of the province. Prior to this, only the white areas were covered under the provincial policy.
- Up to the municipality to ensure they are following the provincial policy.





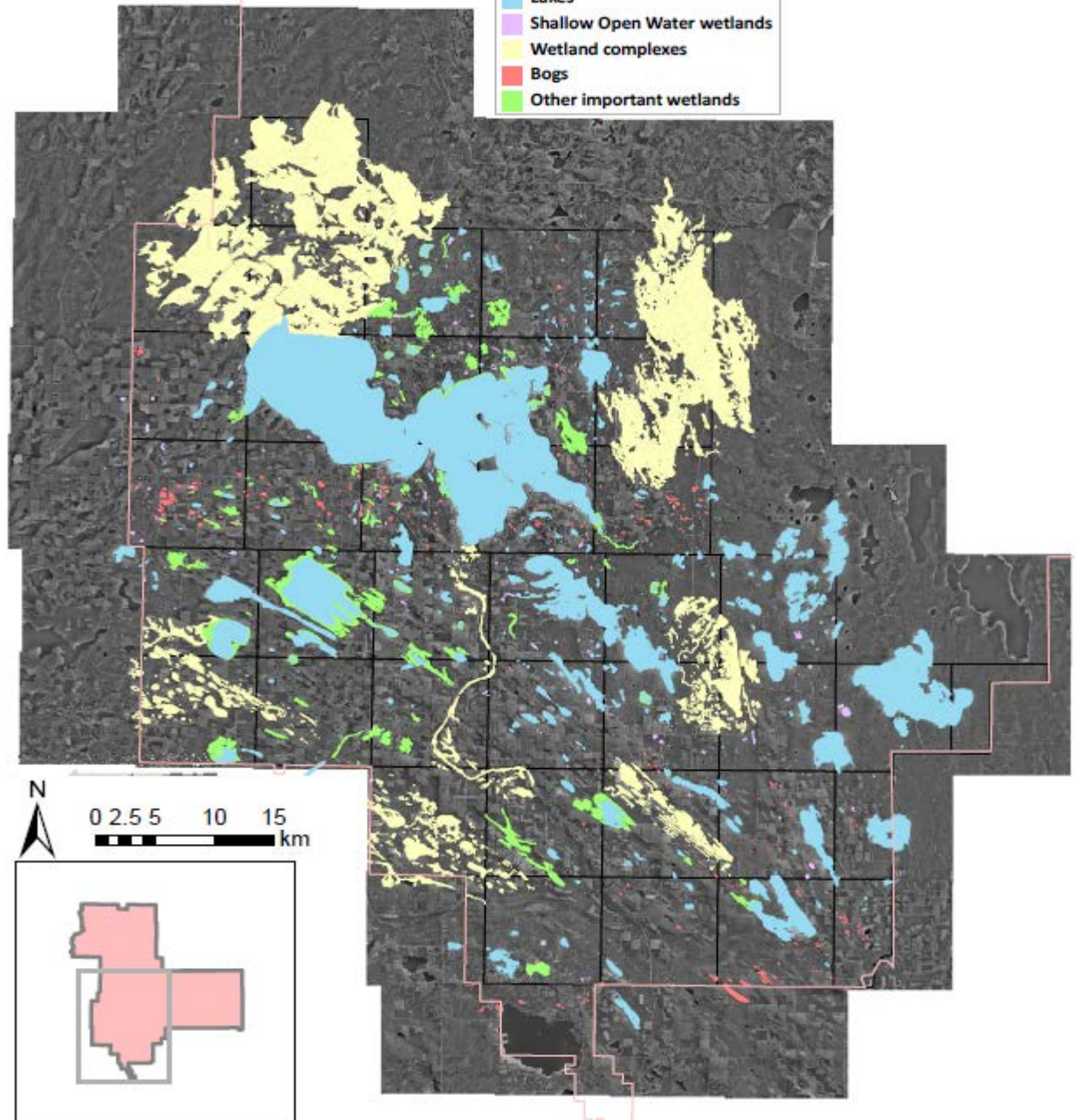
- Lac La Biche County Wetland Inventory
  - Originally completed in 2009
  - Inventory of wetlands within Lac La Biche County white zone
  - Lac La Biche County Wetland Policy in progress



## WETLAND CLASSIFICATION

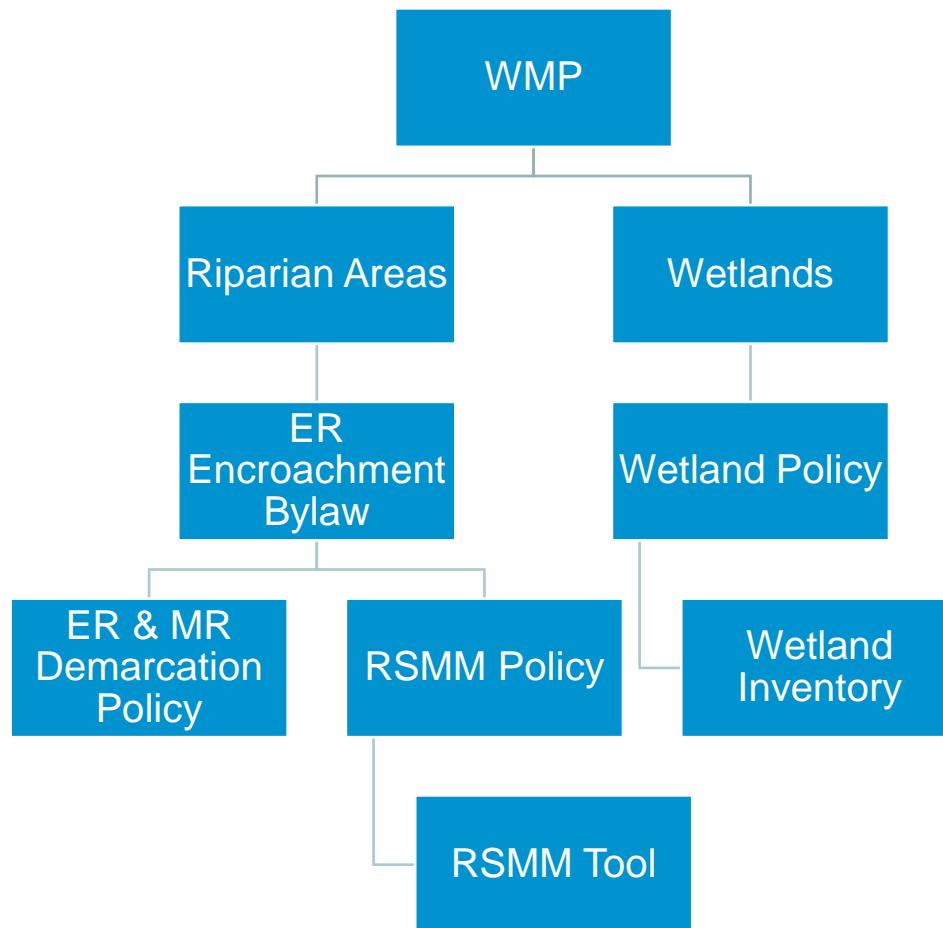
### Legend

- Lakes
- Shallow Open Water wetlands
- Wetland complexes
- Bogs
- Other important wetlands



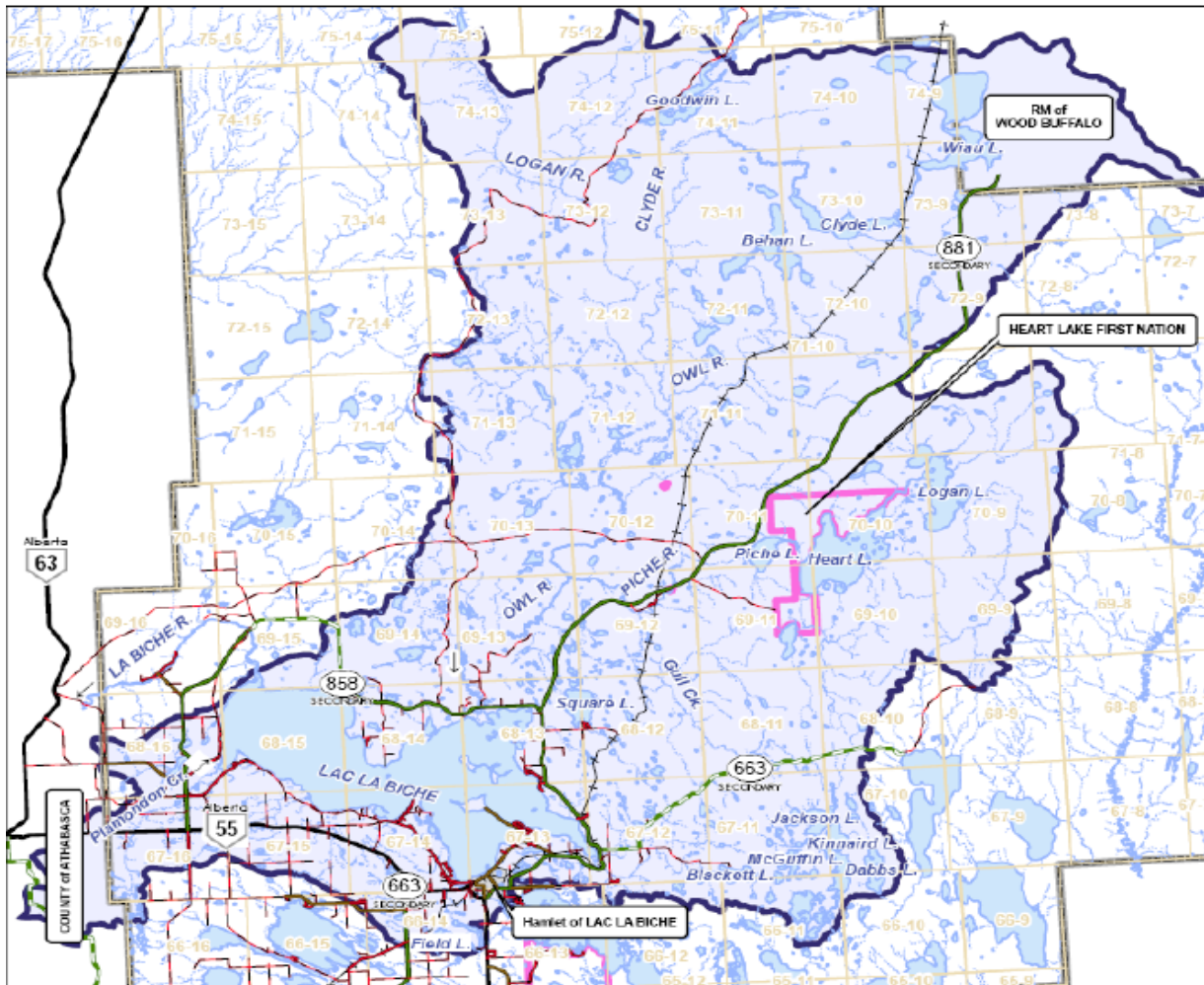
# Riparian and Wetland Management in Lac La Biche County

- Lac La Biche Watershed Management Plan (WMP)
- 2009
- Documents and strategies pertaining to riparian **and** wetland management.
  - Input from various external groups, including Lac La Biche County
- Intent:
  - To assist Alberta Environment with making water resource decisions in the Lac La Biche planning area under provincial legislation (including *Water Act* and *EPEA*)
  - Assistance for the County and other resource managers for land use planning
  - Information for general public
- Next steps: updating (and public consultation process) for discussion with Council



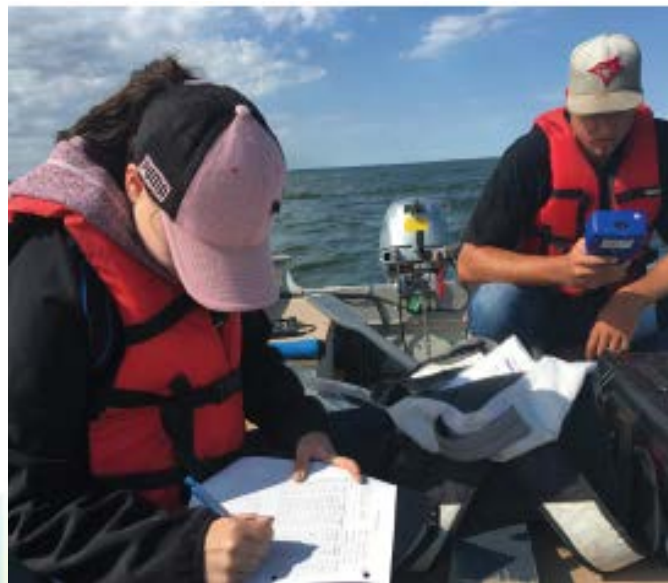
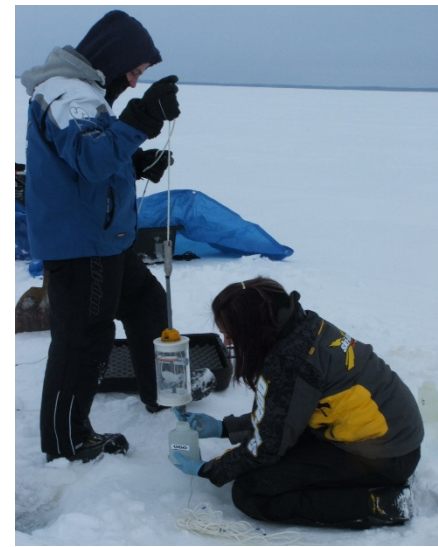


- Lac La Biche Watershed Management Plan (WMP)
  - Addresses water quality, shoreline development, sedimentation and groundwater
  - Led to development of Lac La Biche County's annual lake sampling program (still in existence)
  - As stated in the WMP *“Lac La Biche County will review planning documents and the Land Use Bylaw and incorporate the recommendations within the WMP”*
  - Public outreach and education



# Riparian and Wetland Management in Lac La Biche County

- Riparian & Wetland Management Programs:
  - Water quality sampling (on-going since 2001)
    - Inflow/outflow, lake, and beach sampling (AHS partnership)
  - Partnership with ALMS for LakeWatch Program





# Riparian and Wetland Management in Lac La Biche County

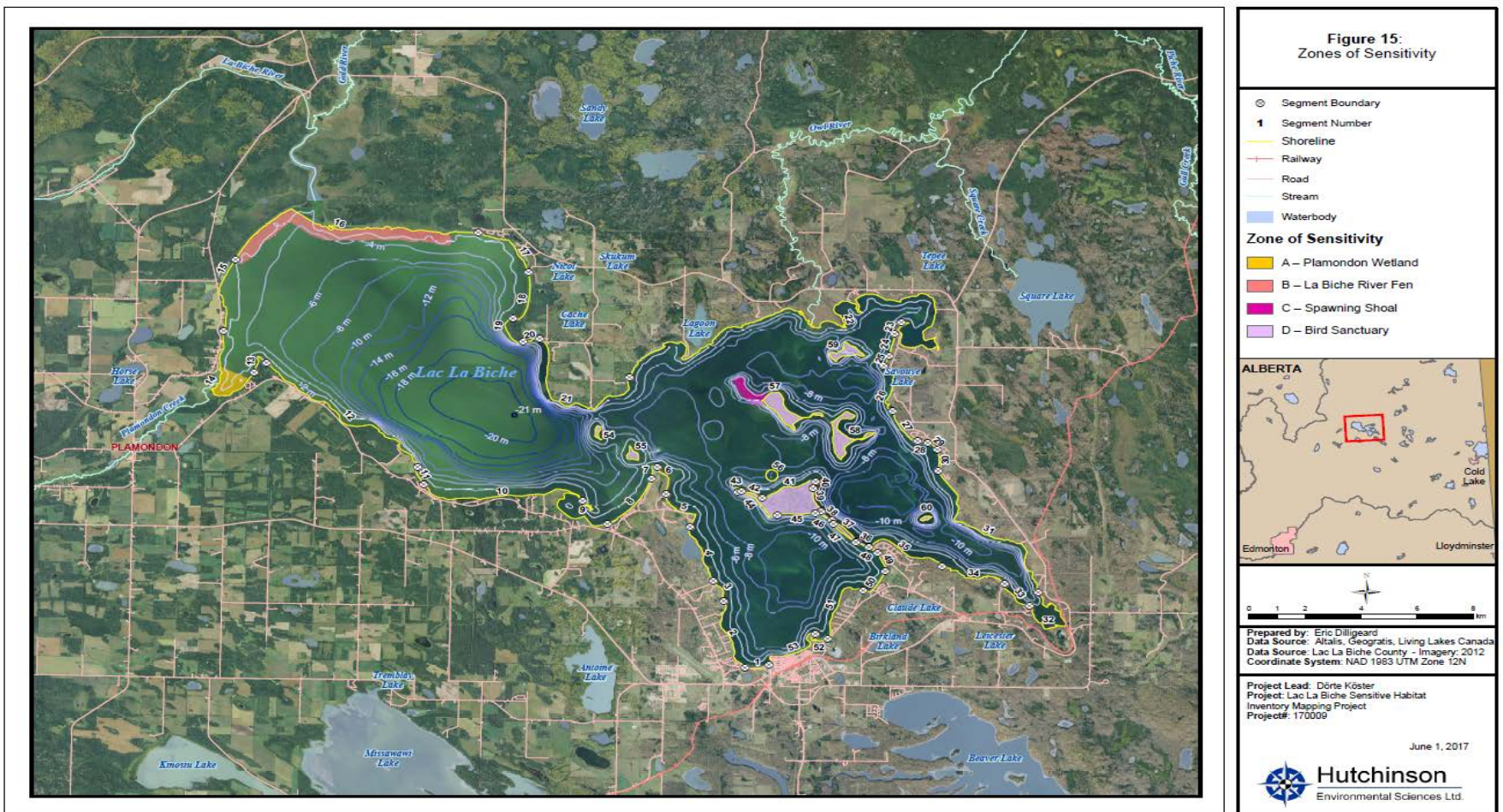
- Riparian & Wetland Management Programs:
  - Nutrient studies on Owl River and Red Deer Brook (dating back to 1998)
  - Nutrient monitoring from BNR plant (on-going since 2011)
  - Educational signs on pathways and shorelines (portion of ER covered)
  - Designation of all islands as provincial park





# Riparian and Wetland Management in Lac La Biche County

- Riparian & Wetland Management Programs:
  - Identification of riparian areas and wetlands (wetland inventory; 2009, and Sensitive Habitat Inventory Mapping Project (SHIM): Living Lakes Canada; September, 2016)





# Riparian and Wetland Management in Lac La Biche County

- Riparian & Wetland Management Programs:
  - Various public education and outreach programs (MAS, school presentations, annual programs)



**MAD  
ABOUT  
SCIENCE**



*Thank you!*

Questions and comments?

