



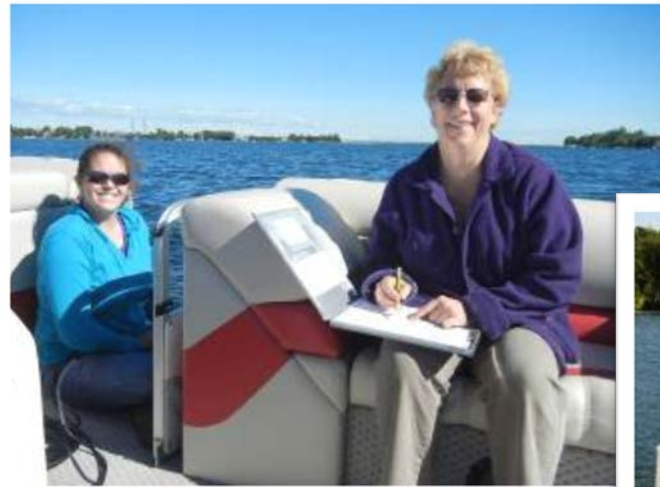
**Laura Redmond, LakeWatch
Coordinator**

September 30, 2017



- Began in 1991 as a non-profit organization.
- Goal: improve or maintain the health of lakes and watersheds by engaging Albertans.
- Two full time staff and seasonal staff, 15 board members, ~60 volunteers





- LakeWatch program is dependent on volunteers.
- Volunteers meet technicians 4 or 5 times throughout the summer.
- Volunteers provide transportation!



ALMS partnership with Lac La Biche County

- Touchwood in 2017
- Past years:
Pinehurst,
Beaver



Lac La Biche County
welcoming by nature.



- Thank-you to all of our LakeWatch volunteers this year!
- 2017 Volunteer of the Year: Orest Kitts from Skeleton Lake





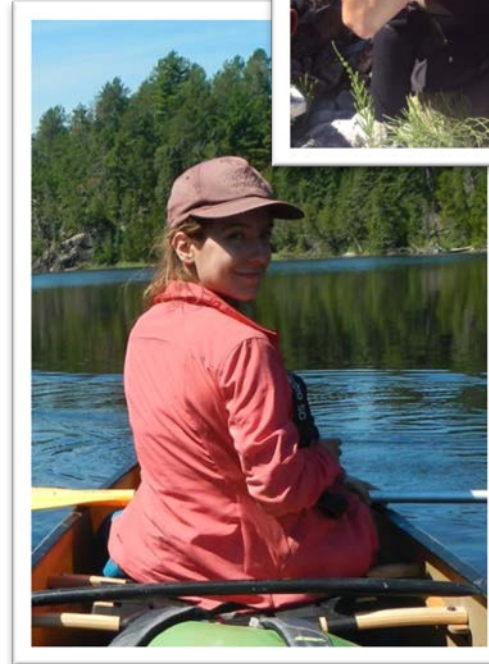
2017 Team!



LakeWatch
Coordinator: Laura
Redmond



Executive Director: Bradley Peter



Technicians :Melissa Risto
and Elashia Young



LakeWatch Volunteer Video Series

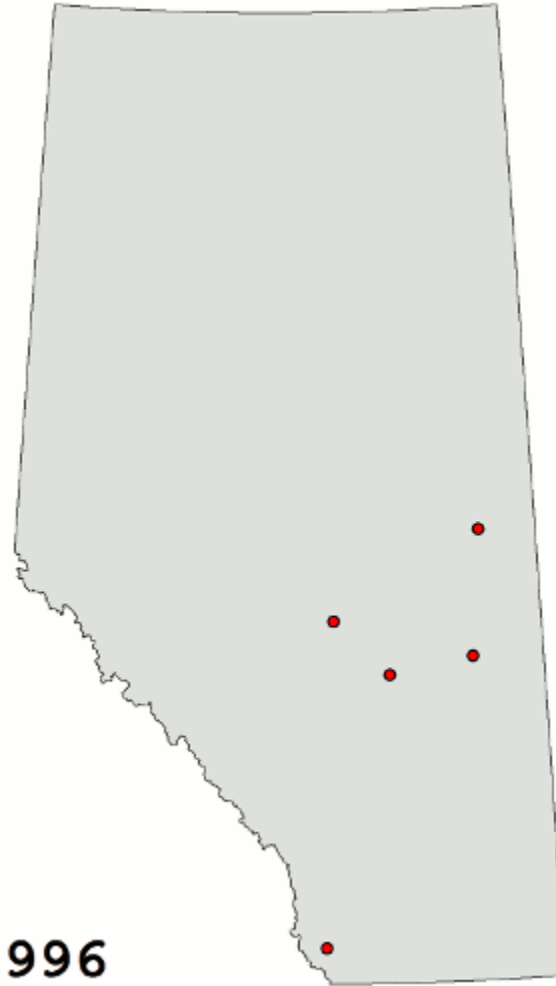
[LakeWatch Video Series](#)

Many thanks to:

- Richard Normandeau of Half Moon Lake
- Patrick Hanington and Cerina Lee



LakeWatch over the years



1996



Base

Antler
Birch
Calling
Half Moon
Island
Lac Bellevue
Lessard
Long Island
Long
Narrow

RDRWA

Alix
Haunted
Burnstick
Gleniffer
Pine

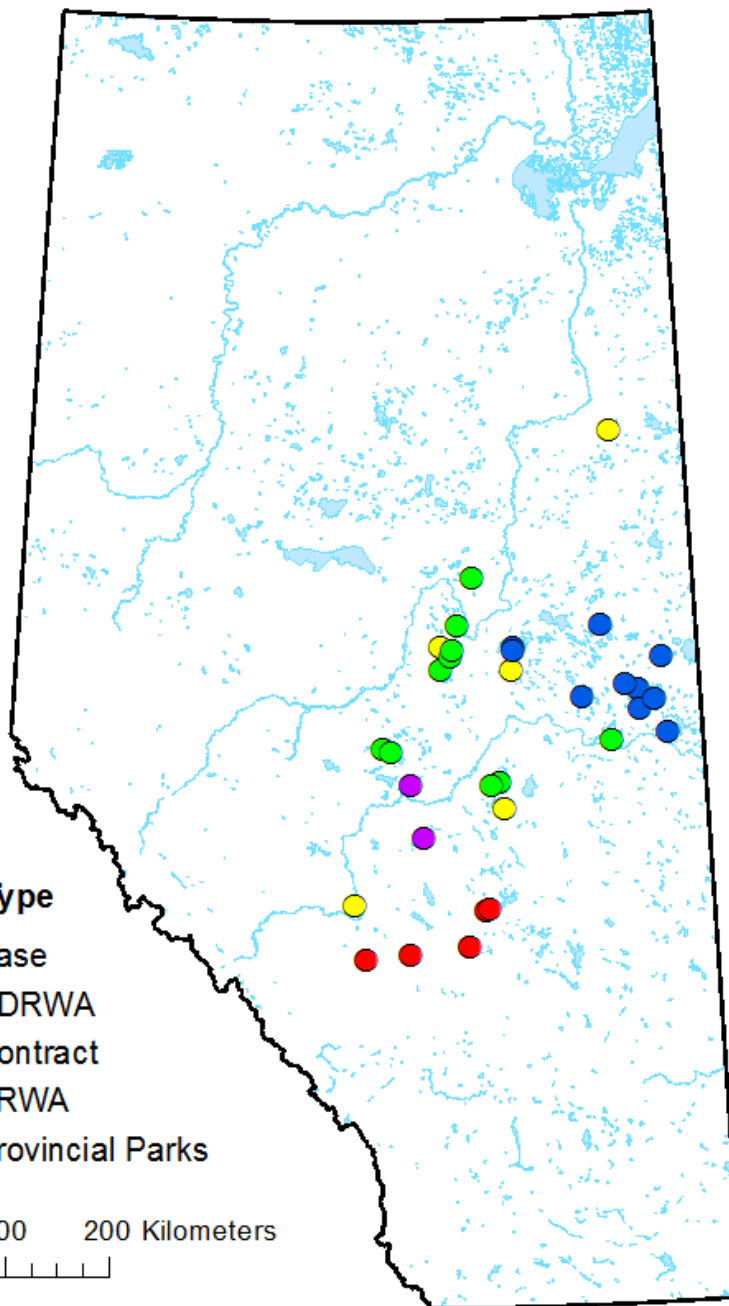
Lake Type

- Base
- RDRWA
- Contract
- BRWA
- Provincial Parks

0 50 100 200 Kilometers



Coordinate System: NAD 1983 10TMAEP Forest
Projection: Transverse Mercator
Datum: North American 1983



BRWA

Crane
Garner
Kehewin
Laurier
Minnie
Moose
Muriel
Skeleton North
Skeleton South
Touchwood

Provincial Parks

Crimson
Gregoire
Long
Miquelon
Steele

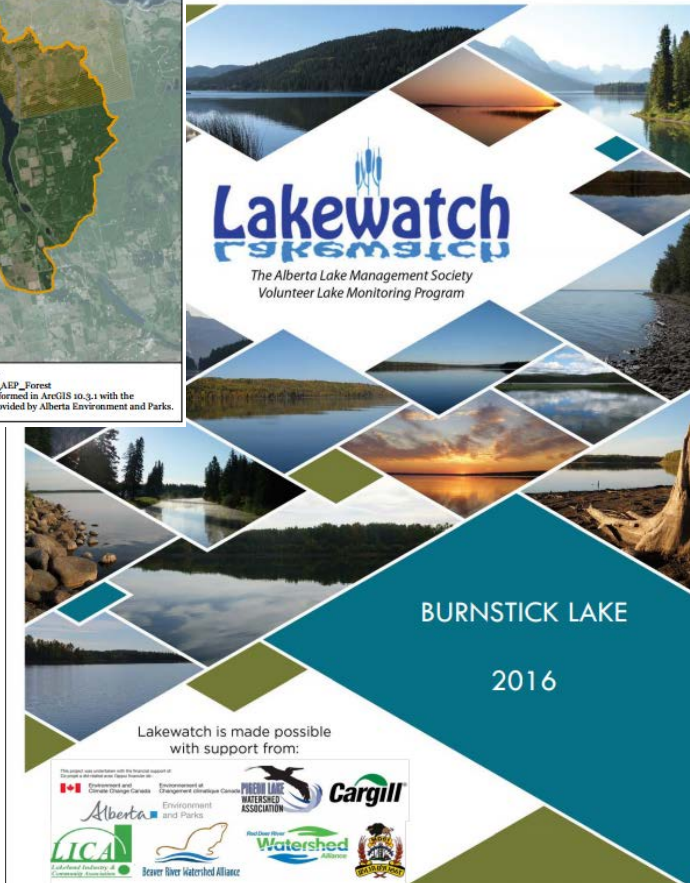
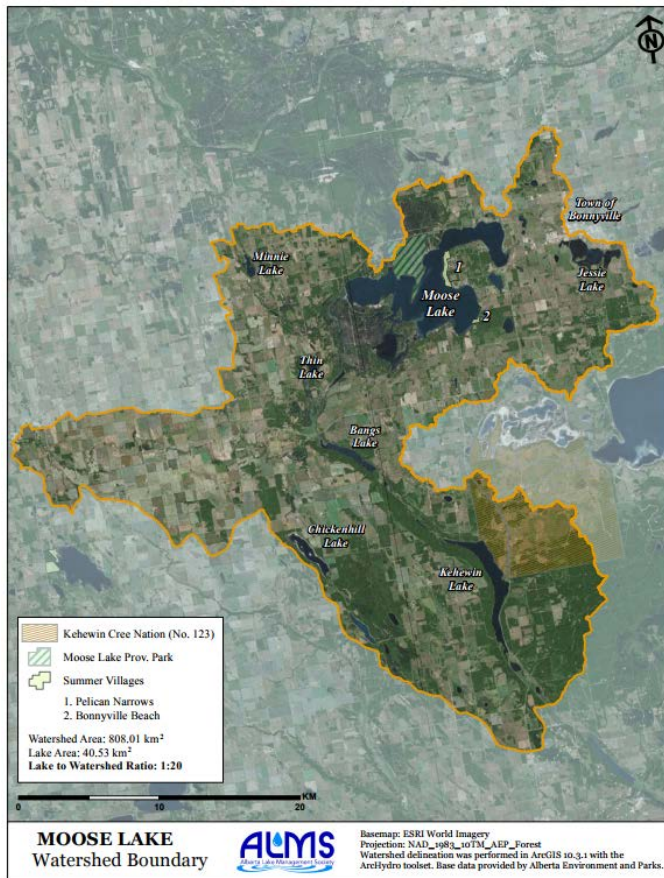
Contract

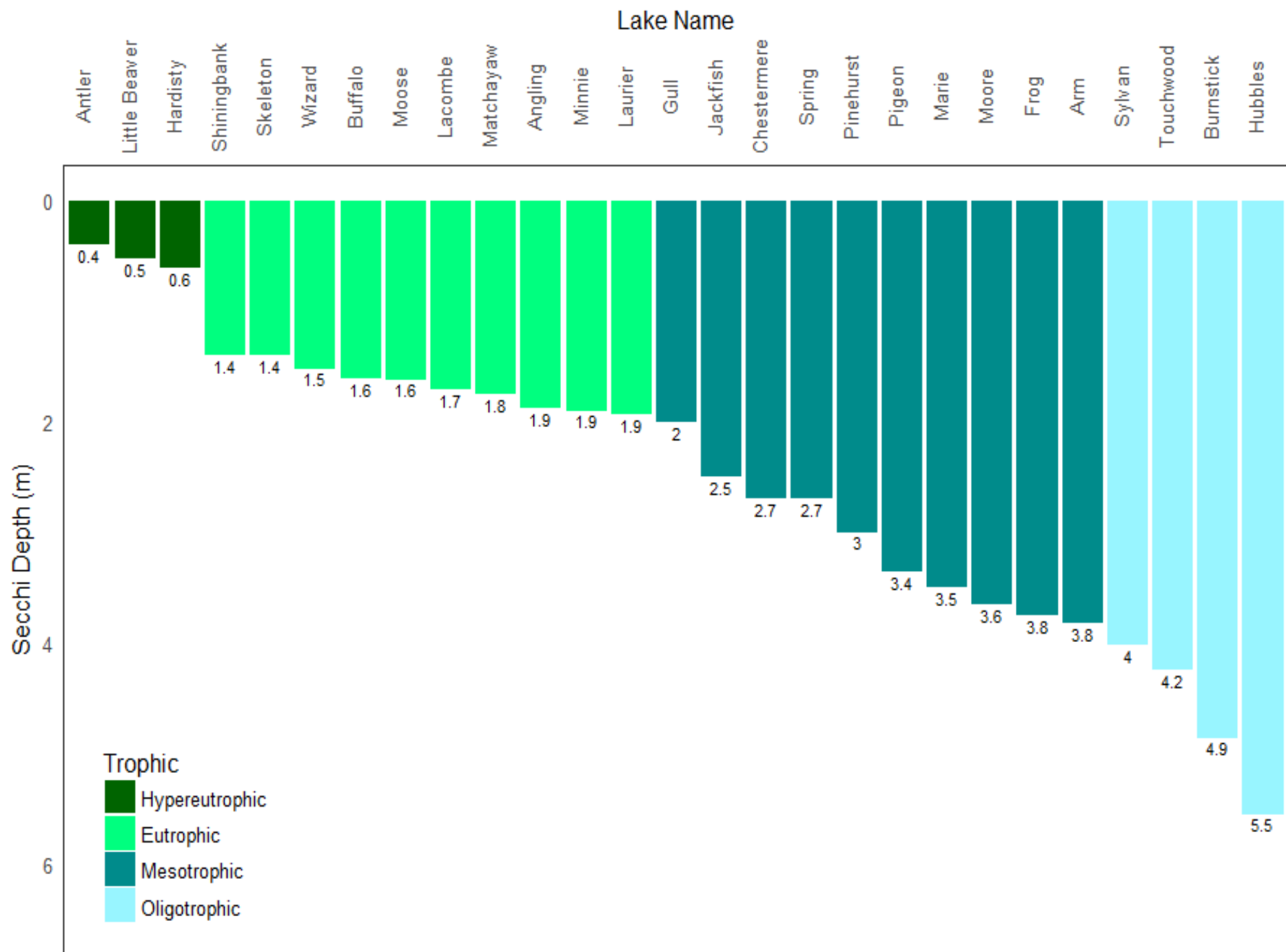
Pigeon
Jackfish

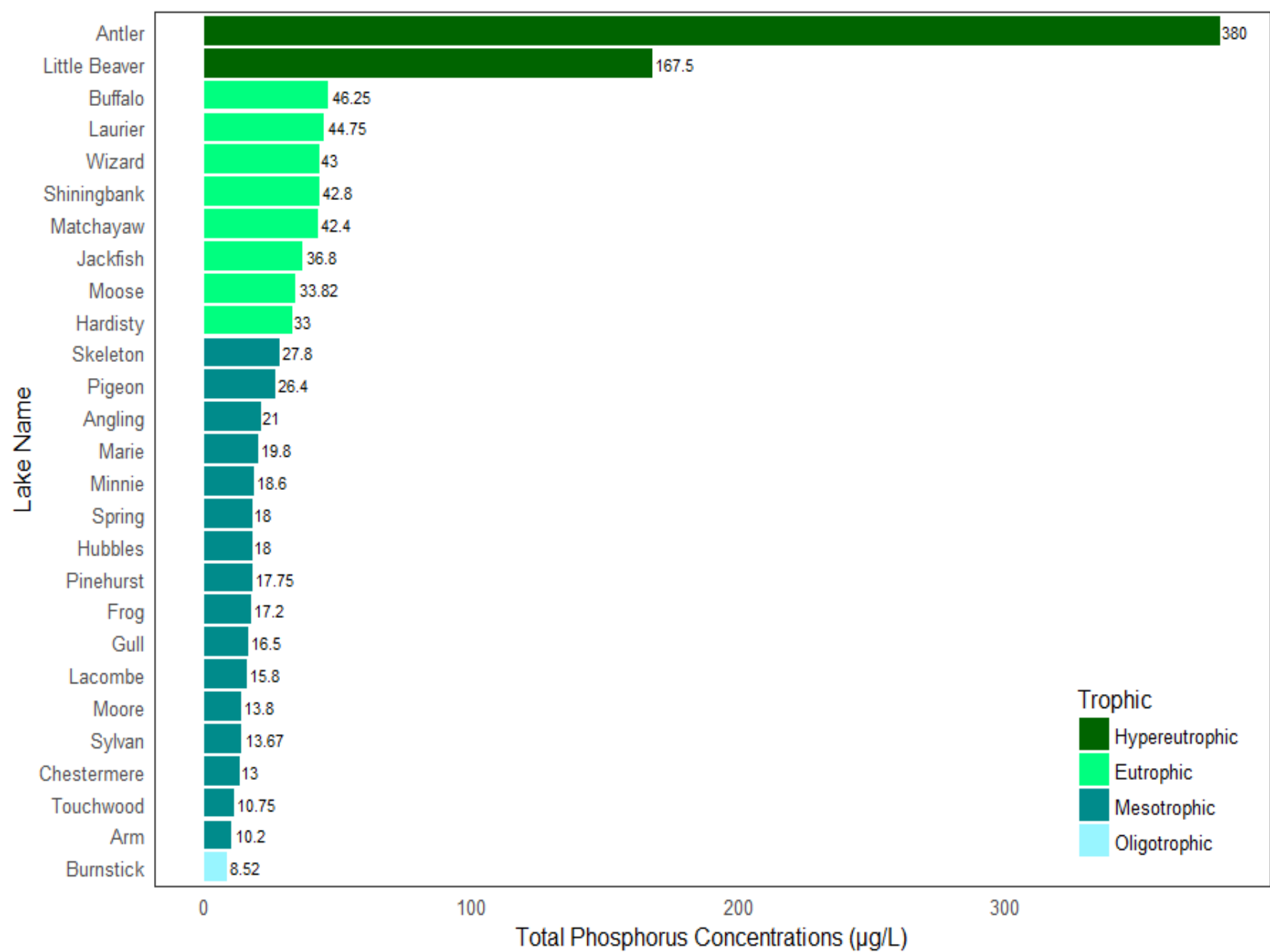


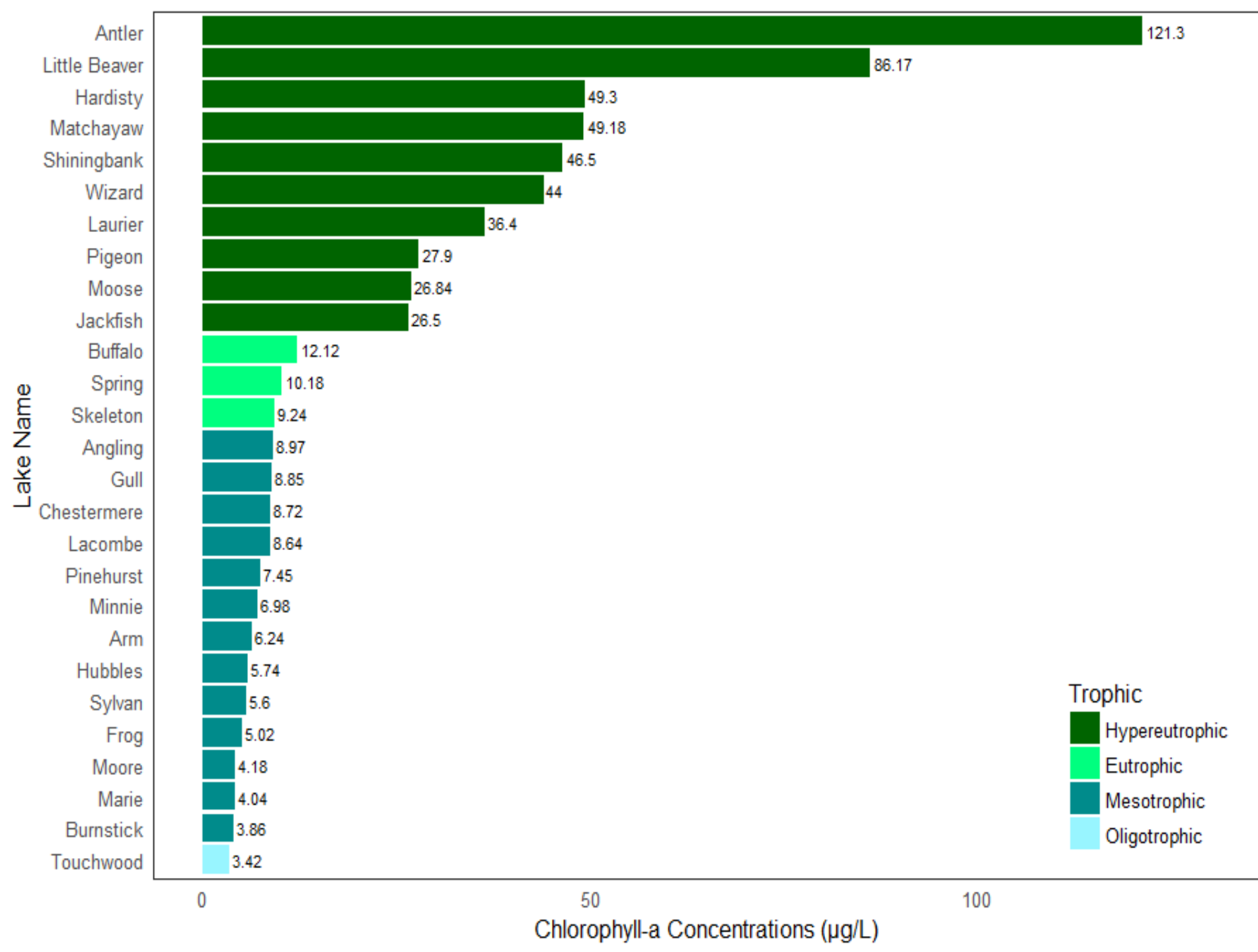
News and Updates:

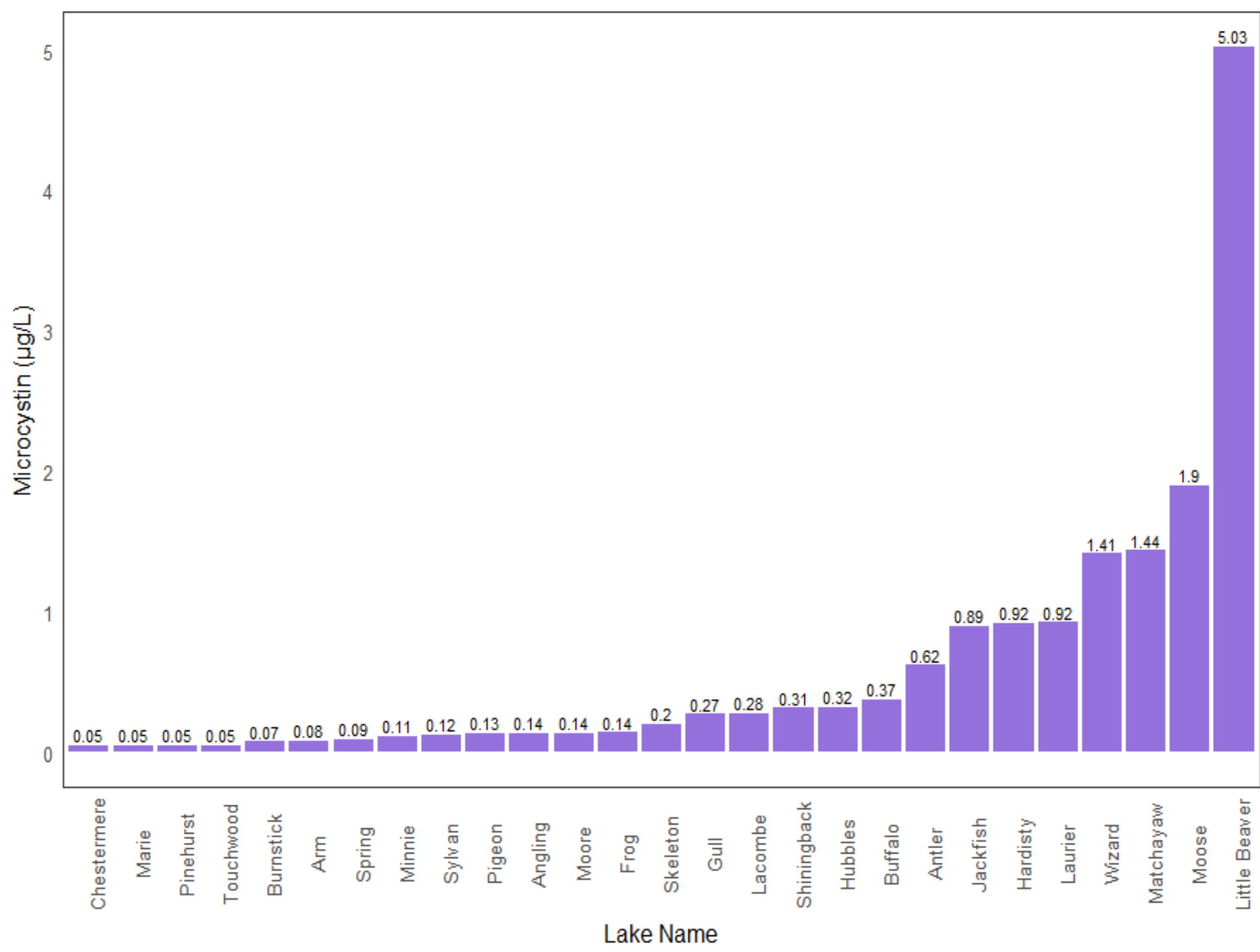
- Operational Funding renewed
- 2016 LakeWatch Reports are now online!
- Watershed Boundary Maps













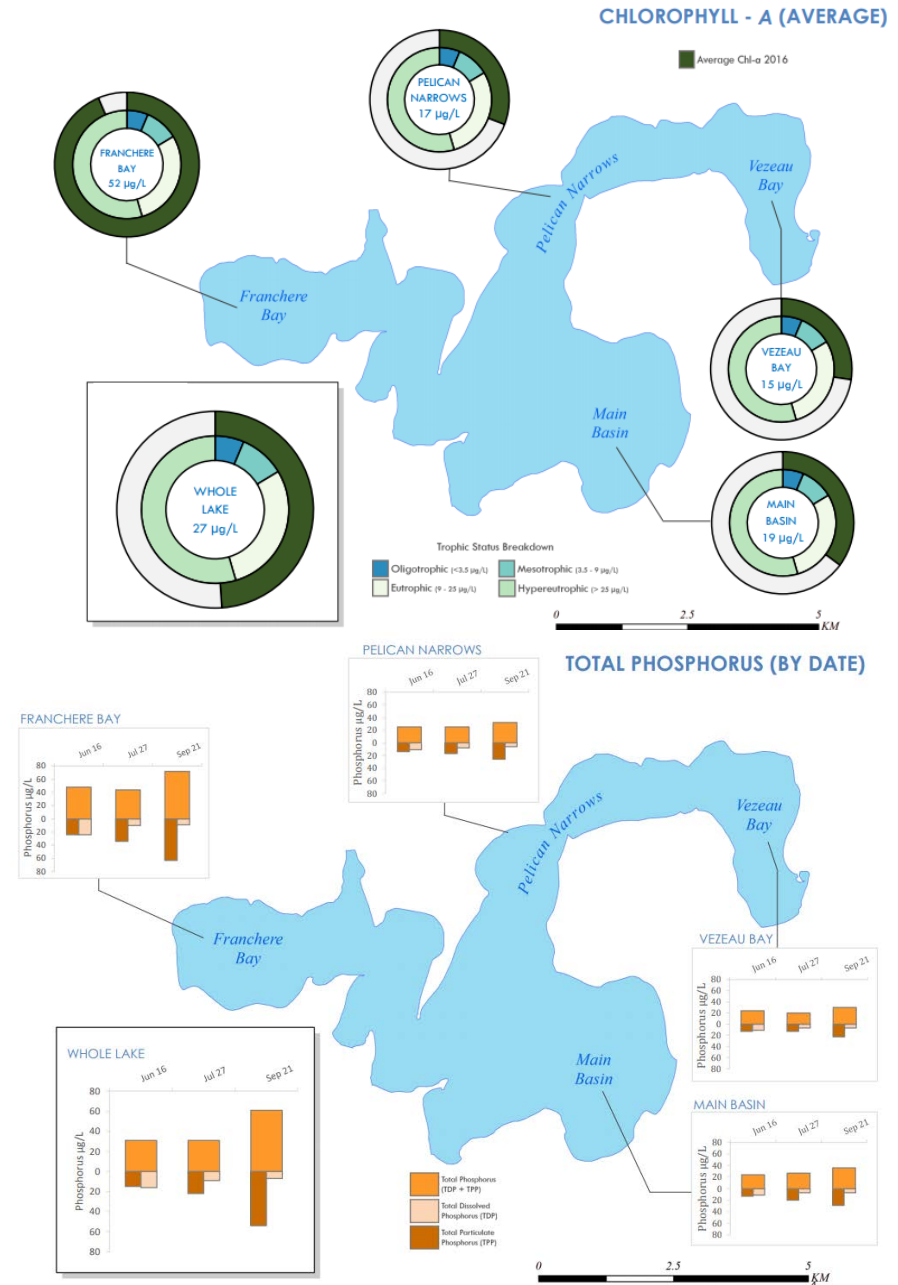
- **Annual General Meeting**
 - November in Edmonton
 - Scholarship winner: Kate Keenan from University of Alberta





Moose Lake Individual Basin Sampling Project 2016-2017

- Composite samples and profiles at each basin and a composite of whole lake
- TP and chlorophyll-*a* were highest in Franchere Bay, but whole lake values were an average of all basins



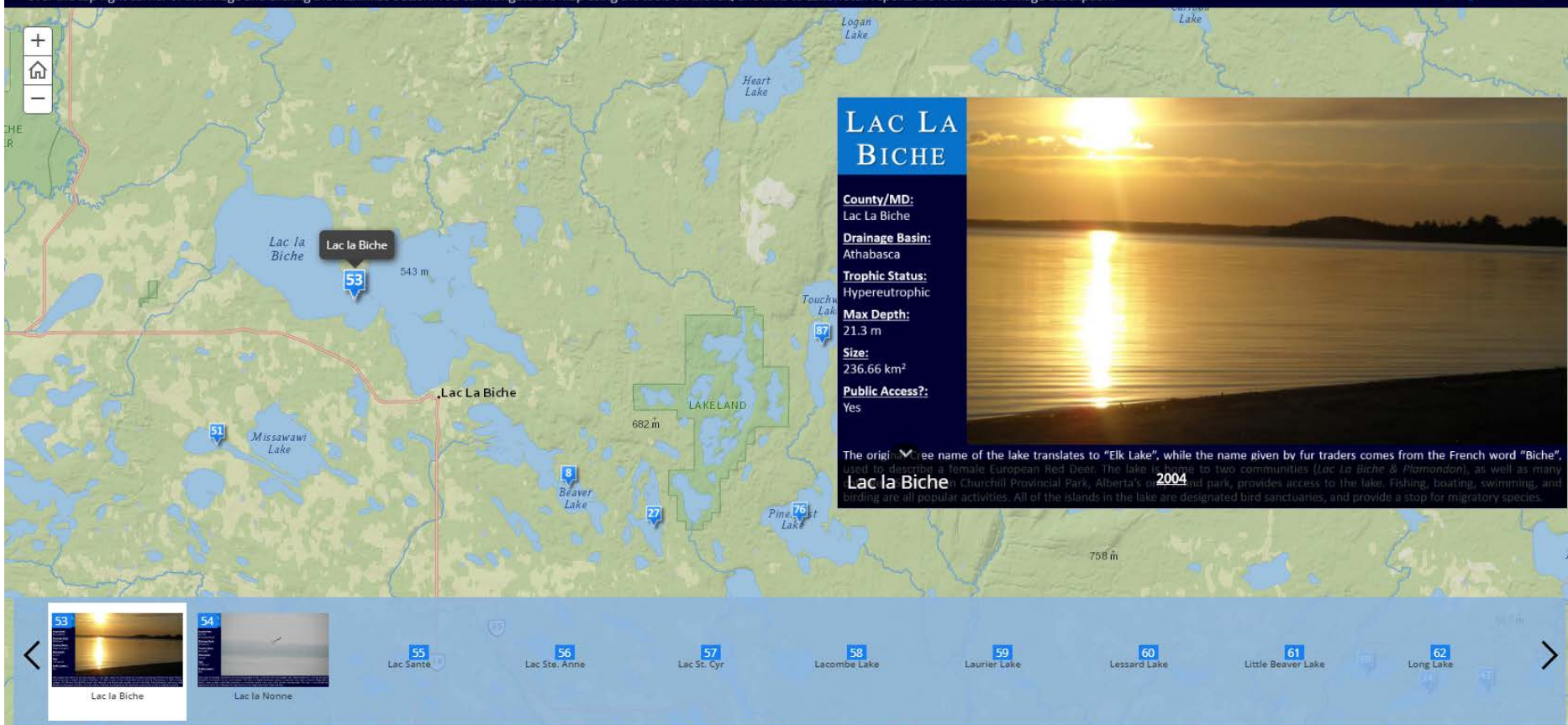


New Interactive Map!

LakeWatch Monitored Lakes (1996 - Present)

LakeWatch is a volunteer-based water quality monitoring program offered to Albertans who are interested in collecting information about their local lake or reservoir. Since 1996, water quality has been monitored at over 100 lakes across the province, and 94 of those lakes are displayed here with information regarding history, region, size, the most recent trophic status (based on chlorophyll-a), and links to reports. Information on each lake can be made larger by hovering your cursor over the top right corner of the image and clicking the maximize button. You can navigate the map using the tools on the left, and links to LakeWatch reports are found in the image description.

A story map [f](#) [t](#) [e](#)



Public Outreach 2017

- 50 + hours of outreach
- 750 + people engaged





- Looking ahead to 2018:
 - Parks lakes in NW
 - Requests from:
 - Little Beaver
 - Buffalo
 - Spring
 - Shiningbank
 - Frog
 - Matchayaw
 - Long Island
 - Wizard
 - Hilda
 - Half Moon



Thanks!

-Follow on FaceBook!
-Sign up for Free Newsletter!

780-702-ALMS
www.alms.ca