

The background of the slide features a close-up photograph of pink flowers and buds on dark stems, set against a backdrop of shimmering blue water. A diagonal blue banner is overlaid across the center, containing the title and organization name in pink and white text.

What's the Rush?

LILSA - Lake Isle Lac Ste Anne
Water Quality Management Society



Bernie Poulin President - Angela Duncan Vice President
Carla Laidlaw Secretary - Patricia Fish Treasurer
Bevan Janzen, Gary Allen, Connie Stonehouse,
Steve Hoyda LSAC

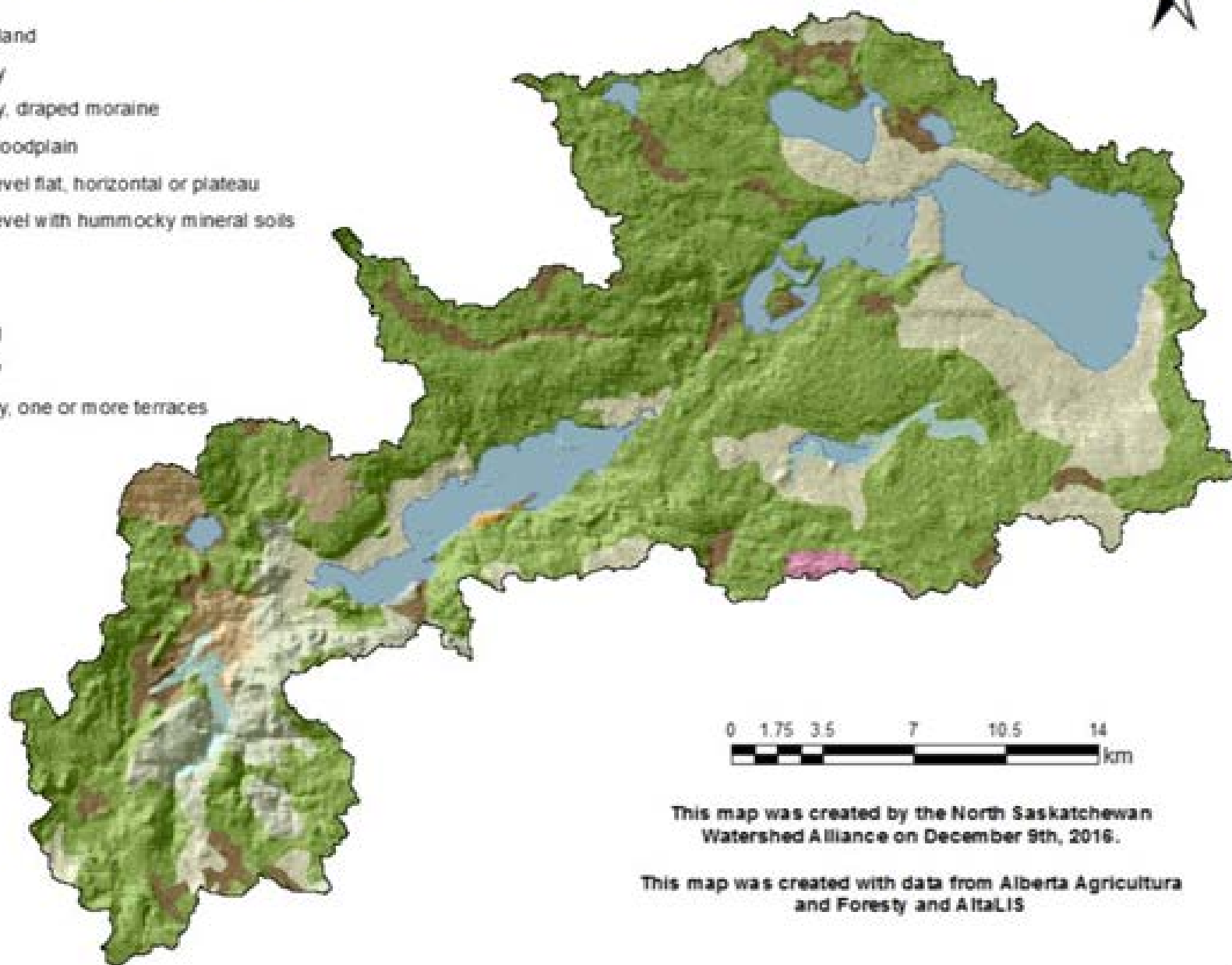
Alexis Nakota Sioux Nation may nominate one (1) community member to be a voting director of the Society.

Parkland County may nominate one (1) of council member to be a voting director of the Society.

Landforms in the Isle Lake and Lac Ste Anne Watersheds



- Disturbed land
- Hummocky
- Hummocky, draped moraine
- Meander floodplain
- Organic, level flat, horizontal or plateau
- Organic, level with hummocky mineral soils
- Ridged
- Rolling
- Undulating
- Waterbody
- Wide valley, one or more terraces



0 1.75 3.5 7 10.5 14 km

This map was created by the North Saskatchewan Watershed Alliance on December 9th, 2016.

This map was created with data from Alberta Agriculture and Forestry and AltaLIS

What's the Rush?



Ben Legler.



CBC News · Posted: Jul 02, 2015 12:00 PM MT | Last Updated: July 2, 2015





Expertise & Commitment

- 2013 Flowering Rush at Gainford boat launch reported to NK/AF - *but how to respond?*
- 2014 Overwhelming Lake Isle infestation discovered; KW arrives, starts AIS program.
- 2015 AIS program developed in AEP, receives funding & mandate, NK/KW secure Graduate Student LC.
- 2016 Flowering Rush project work and data collection. Research plots installed in lake. AEP begins approval process for herbicide application.
- 2017 Graduate Studies wrap up. Herbicide application approval granted late August.

2015 — 2016

LAKE ISLE FLOWERING RUSH SURVEY MAP

-  2016 FLOWERING RUSH
-  2015 FLOWERING RUSH



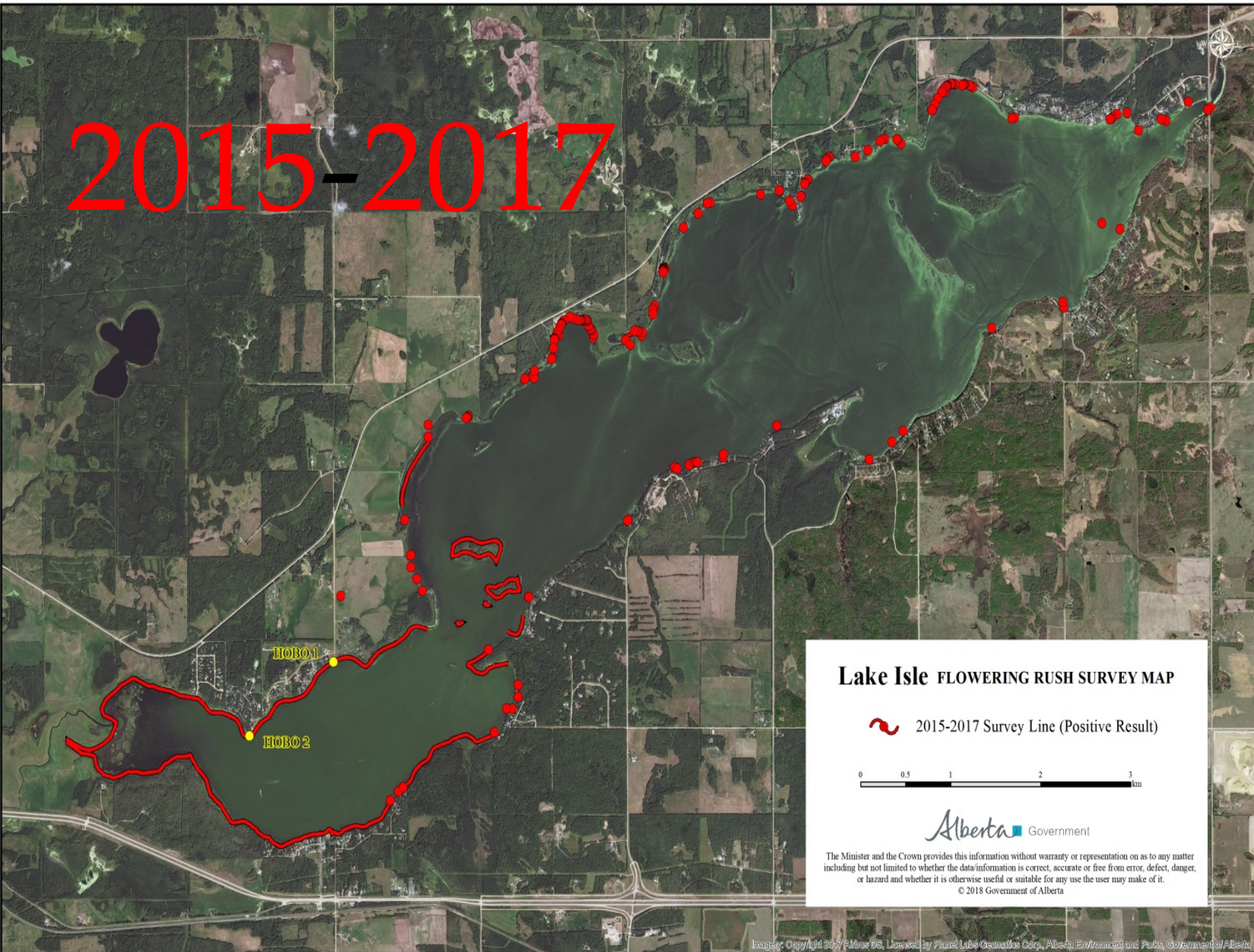
0 0.5 1 2 3 km

Alberta Environment and Parks


The Minister and the Crown provides this information without warranty or representation on as to any matter including but not limited to whether the data/information is correct, accurate or free from error, defect, danger, or hazard and whether it is otherwise useful or suitable for any use the user may make of it.

© 2016 Government of Alberta

2015-2017



Lake Isle FLOWERING RUSH SURVEY MAP

 2015-2017 Survey Line (Positive Result)

0 0.5 1 2 3 km

 Alberta Government

The Minister and the Crown provides this information without warranty or representation on as to any matter including but not limited to whether the data/information is correct, accurate or free from error, defect, danger, or hazard and whether it is otherwise useful or suitable for any use the user may make of it.
© 2018 Government of Alberta



♪ *East, to the Sturgeon~*
Goin' East, the Rush is on ♪

Edmonton Journal (video) Larry Wong 2018.08.27

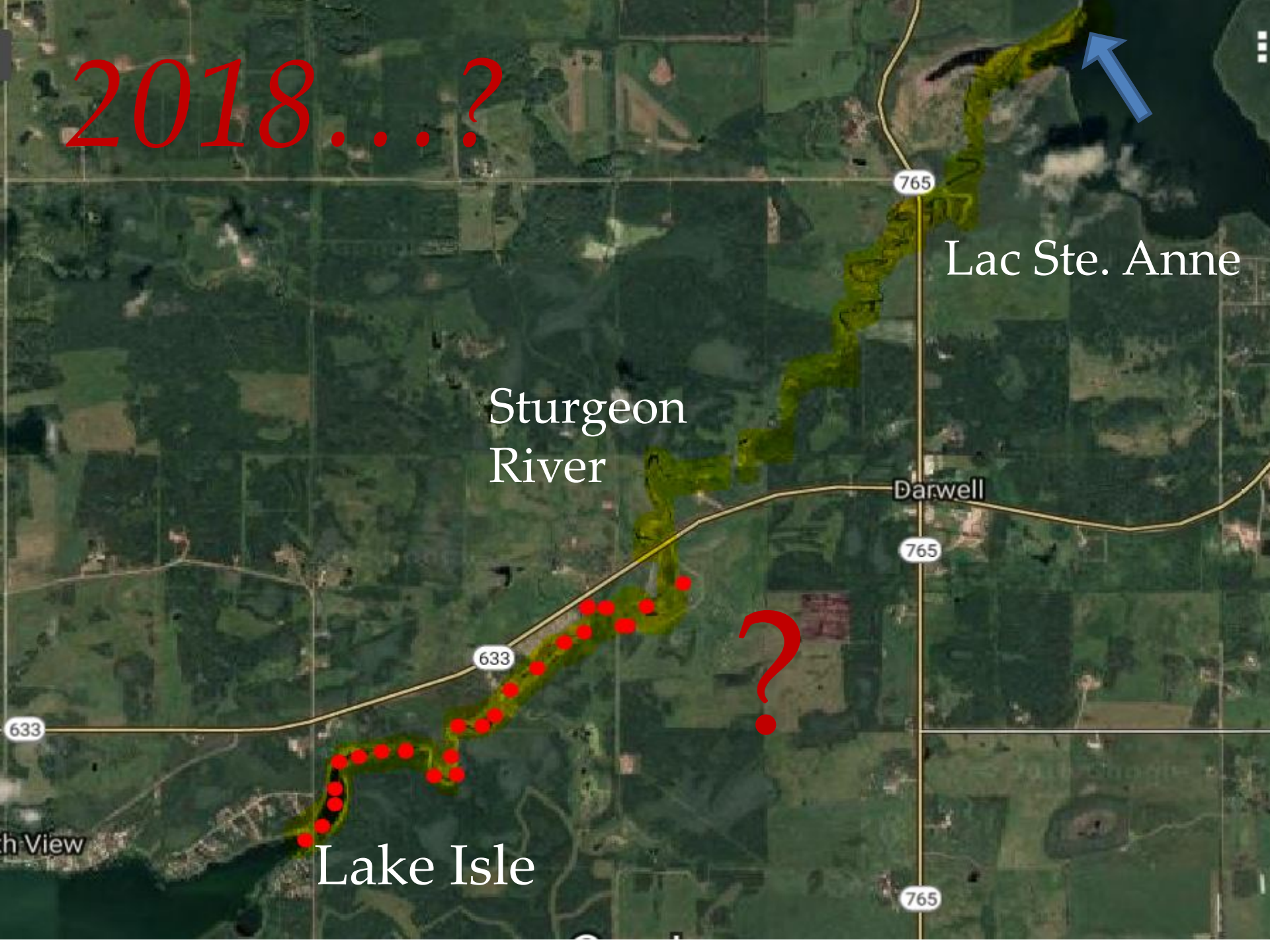
Surveying the Sturgeon



2017-18- - -



2018....?



Lac Ste. Anne

Sturgeon
River

Darwell

Lake Isle

Aquatic invader killing Lake Isle



LILSA EDUCATION AND OUTREACH

Edmonton Journal (video) Larry Wong 2018.08.27



Lake Isle Flowering Rush Control

Tanya Rushcall
Aquatic Invasive Species Technician
Certified Pesticide Applicator
Alberta Environment and Parks

Tanya.Rushcall@gov.ab.ca

780-644-4647



*It's time to
start
digging!*

This project supported with funding from

alberta
ecotrust



www.lilsa.ca

Flowering Rush

is infesting Lake Isle and rapidly spreading to Lac Ste. Anne. It brings many harmful impacts to cottage owners and all who enjoy fishing, swimming, boating here. It could make it impossible for plants, fish, or birds to thrive here, and has potential to fill in both lakes. There are currently no 100% effective methods for controlling Flowering rush. Hand digging can be very effective *IF* done correctly. If any root pieces or bulbils are missed, they will drift to new locations and form new plants. LILSA is coordinating a community-wide response to help prevent the infestation from completely infilling these lakes. We need your help.



Free Info &
Training Sessions

June 9, July 7,
July 28, 2018
Lutheran Camp

— Please have at least 1 family member —

-Register for free session on how to correctly identify, remove and dispose of plant, root and bulbils. *Please do not attempt this without training.*

-Sign up for personal use of LILSA equipment and/or have a LILSA Volunteer come to assist you with your pull

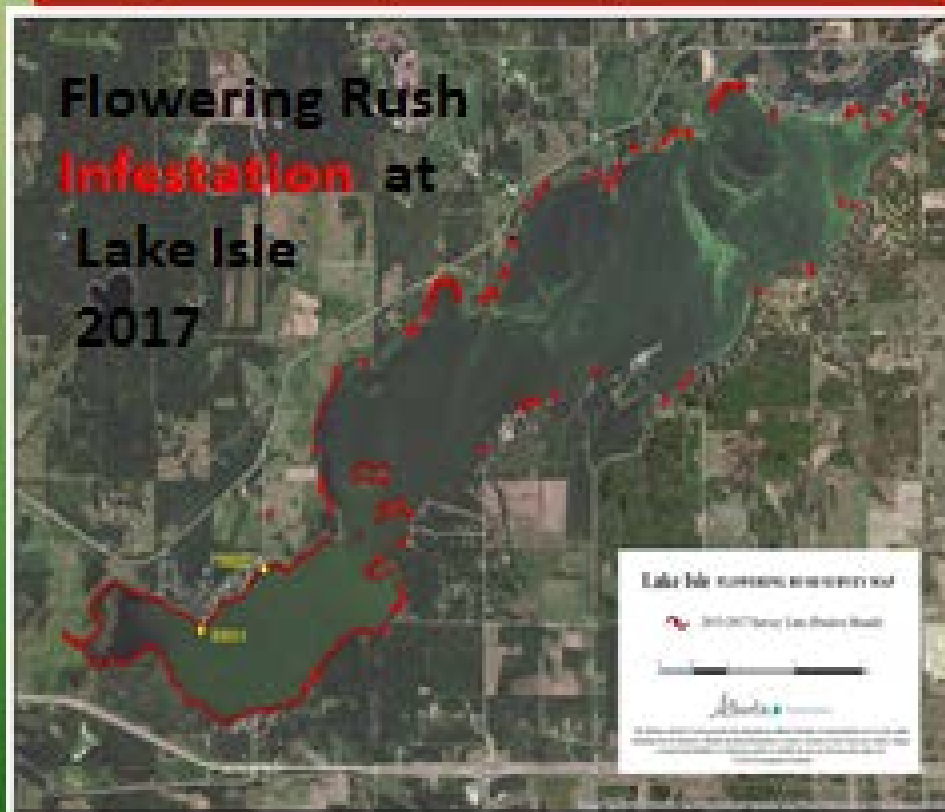
~ Join LILSA ~ Become a Board Member ~

~ Volunteer to help others in the LILSA community ~

Together we can preserve and protect our lakes


Lake Isle Lac Ste. Anne Water Quality Management Society
Flowering rush Coordinator – Patti : 780.967.6811

Flowering Rush Infestation at Lake Isle 2017



The East Basin

Lake Isle FLOWERING RUSH SURVEY MAP

 2015-2017 Survey Line (Positive Result)

0 0.5 1 2 km

Alberta Environment
and Parks

The Minister and the Crown provides this information without warranty or representation on as to any matter including but not limited to whether the data/information is correct, accurate or free from error, defect, danger, or hazard and whether it is otherwise useful or suitable for any use the user may make of it.

© 2017 Government of Alberta

LILSA Flowering Rush Info & Training

Jun - Jul 2018



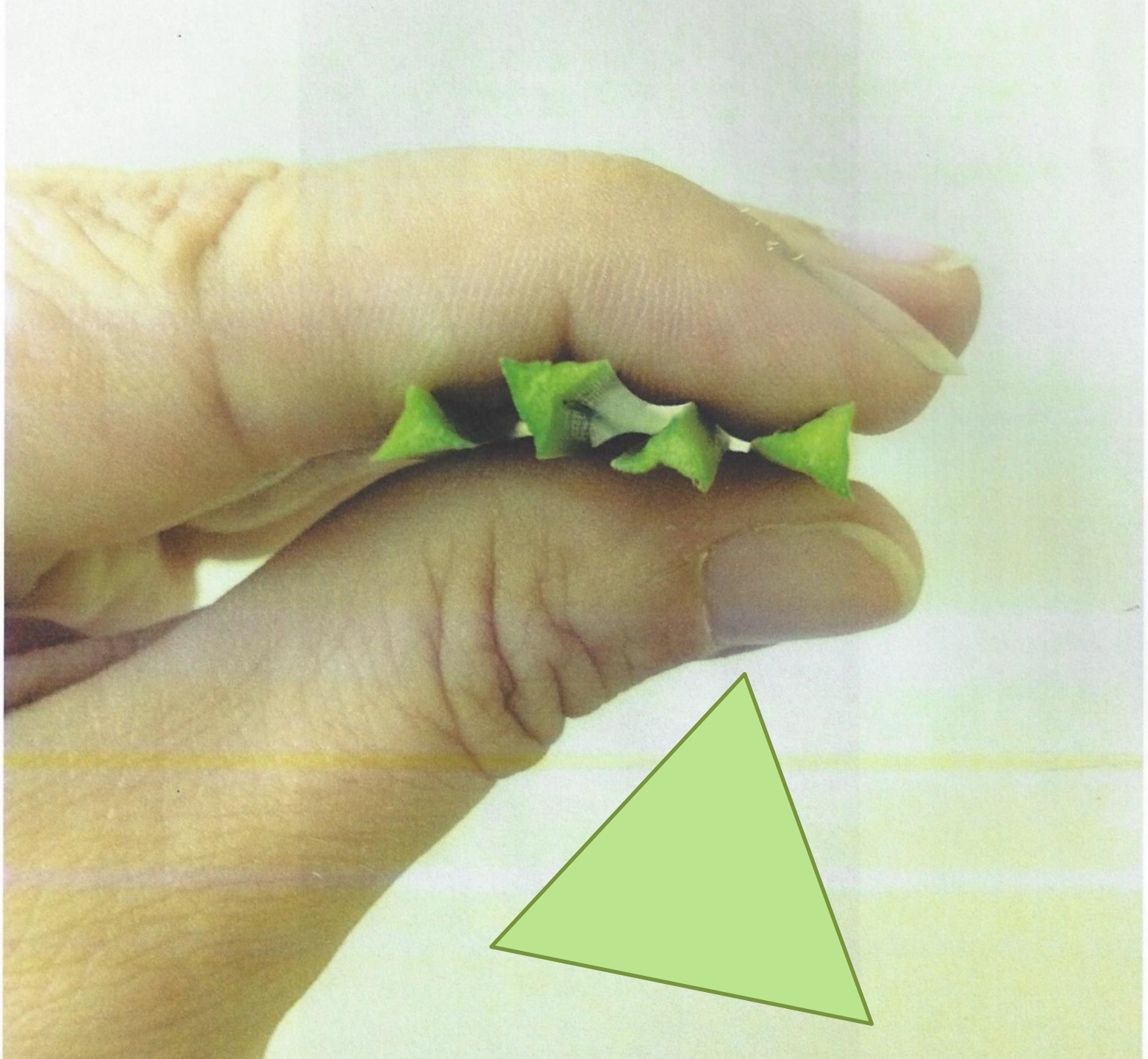


LILSA Flowering Rush Info & Training Jun- Jul 2018





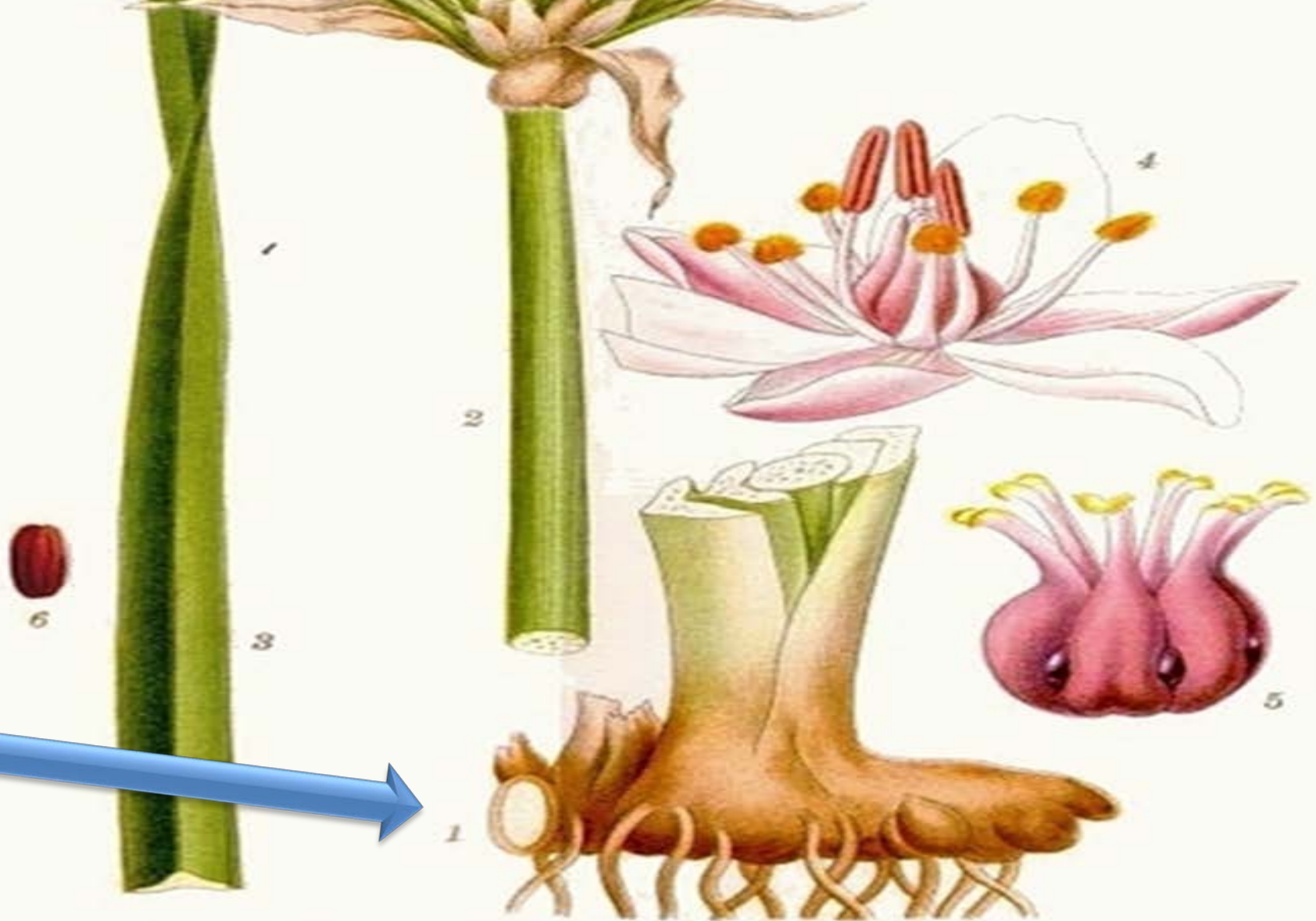






Nicole Kimmel, ARD





BLMVASS, BUTOMUS UMBELLATUS L.

















Legend:

- area searched and no flowering rush
- small individual plants found
- large patch of rush removed
- Rush seen but not removed





Be like Carla.



Carla cares.

Aquatic invader killing Lake Isle



Edmonton Journal (video) Larry Wong 2018.08.27


The West Basin



HOB01

HOB02

Lake Isle FLOWERING RUSH SURVEY MAP

 2015-2017 Survey Line (Positive Result)

0 0.5 1 2 km

 Alberta Environment and Parks

The Minister and the Crown provides this information without warranty or representation on as to any matter including but not limited to whether the data/information is correct, accurate or free from error, defect, danger, or hazard and whether it is otherwise useful or suitable for any use the user may make of it.

© 2017 Government of Alberta

The province had planned to spray the lake with a Diquat herbicide on July 18, a move that would have started a years-long process to treat the lake. Destroying the plant can take up to five years of seasonal sprays, conducted at specific times to protect spawning fish populations. The plan was cancelled after community members raised concerns about the chemical, Dykstra said. (EDM JRNL C.Clancy 8.08.27)

Alberta

Herbicides

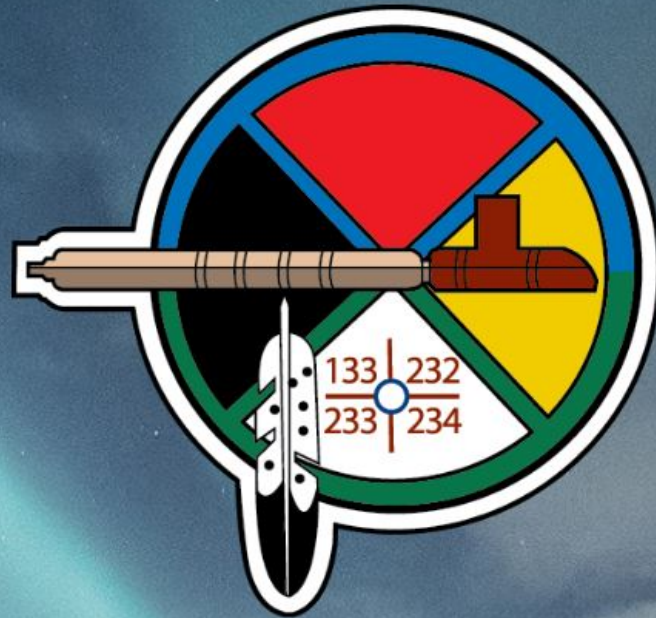


Photos courtesy of Red Deer County

“Primarily there were some concerns from First Nations groups that we had to take into account. Before we take the step of using an aquatic herbicide, we chose to take some more time and engage with folks.”

Matt Dykstra, spokesman for the Ministry of Environment and Parks.





ALEXIS NAKOTA

SIOUX NATION

Alexis Nakota Sioux Nation- located about 20km downstream from Isle Lake on Lac Ste. Anne.

“Our people drink the water,” said consultation manager **Duane Kootenay**. “We don’t know much about this (herbicide) ... only that it’s the only proven chemical to treat this plant.”

His community was notified of the plan to spray about 18 months ago, but Kootenay said they weren’t consulted properly and remain concerned about the herbicide’s long-term effects. “We have people who still practice the culture, they harvest the animals, medicinal herbs. This affects our treaty rights,” he said.

“Mother Nature has an equilibrium and sometimes mankind does too much in an area and Mother Nature tries to correct that in its own way. As far as we know, maybe that’s what the flowering rush is all about.”

LILSA Welcomes You

2018 Annual General
Meeting and Conference



Nan Cox-Kennett

STATEMENT TO MINISTER CARLIER

Flowering rush is prohibited noxious weed under the Alberta Weed Control Act of 2008 and updated 2017. It causes significant ecological and economic impact. According to this act, Flowering Rush must be destroyed.

It is non-native. It is an intruder, an invader, an alien. It is a threat.

The government's own website states landowners MUST take action - not shall or should. We acknowledge that we don't own the water line - it belongs to government - meaning ALL OF US.

If this weed crowds out the entire lake, there will be no water, no wildlife. Already bird habitat has been destroyed at the west end. There are no bull rushes and no nesting birds this year. We need to research, Diquat spraying is a safe alternative. We are not successfully at other Alberta locations. We need to worry about the drinking water supply of bottled water. Please ease their minds. Larger spray.

Presented by Nan Cox-Kennett
2018.08.18

According to the Act - the minister has a right to fine up to \$1000/day for failure to comply with an order to remove. Your government acknowledges Lake Isle has a problem. The virtual fine will be the rising cost to eradicate this at a later date using more tax dollars. Once again, please act now.

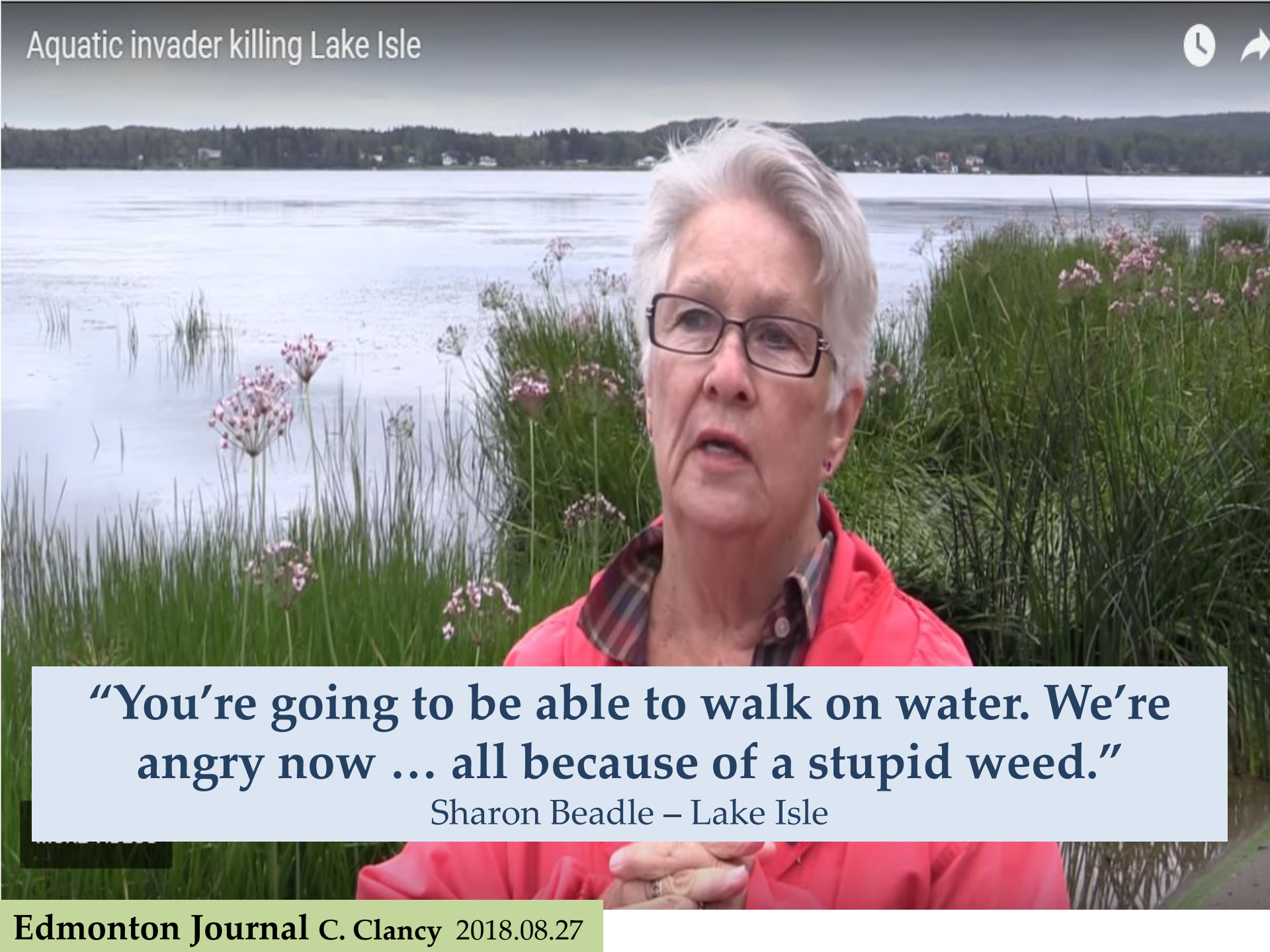
A background image of pink flowers, possibly tulips, with green stems and leaves. The flowers are in various stages of bloom, with some showing the characteristic six-petaled shape and others as buds. The background is softly blurred.

“This is what we elect you Minister Carlier to do – look after common interests when not everyone can see the bigger picture. Please act now.”

“ Your government acknowledges Lake Isle has a problem. The virtual fine will be the rising cost to eradicate this at a later date using more tax dollars. Once again...

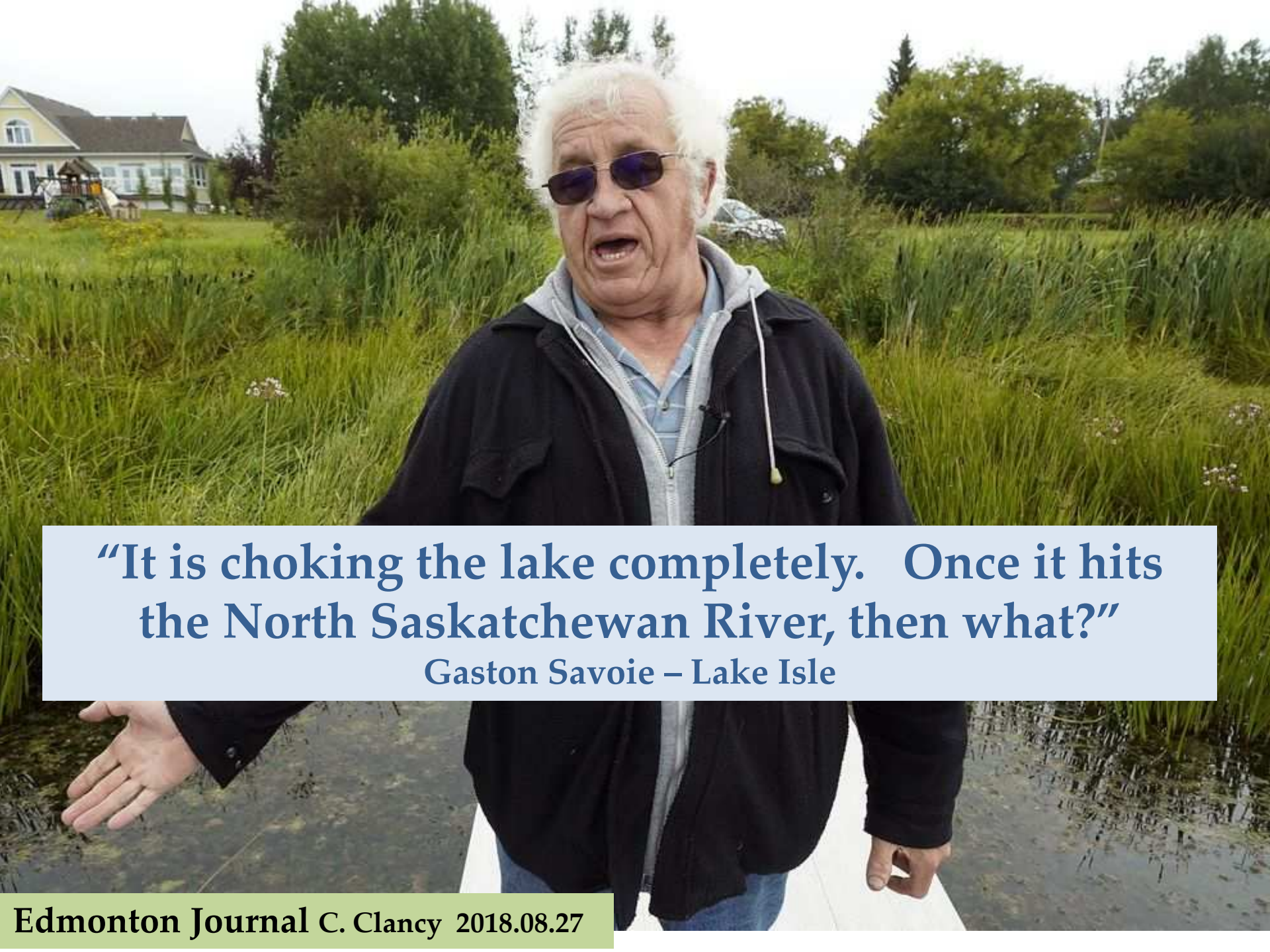
“Please act now”

Nan Cox-Kennett – Lake Isle

A woman with short white hair and glasses, wearing a red jacket, is speaking in front of a lake. Tall green reeds with pink flowers are in the foreground. The lake is calm, and a forested shoreline is visible in the background.

“You’re going to be able to walk on water. We’re angry now ... all because of a stupid weed.”

Sharon Beadle – Lake Isle



“It is choking the lake completely. Once it hits the North Saskatchewan River, then what?”

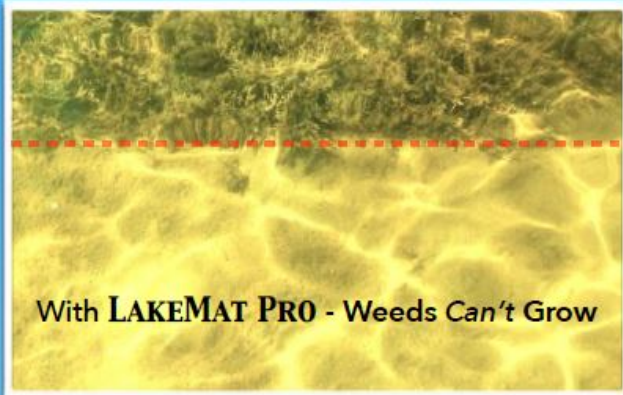
Gaston Savoie – Lake Isle

A photograph of a lush green field with tall grass and clusters of small pink flowers. The text "Doing nothing is not an option." is overlaid in white serif font. A small lowercase letter 'a' is positioned above the first 'n' in "nothing".

^a
Doing nothing is
not an option.

Weed mats

You'll Be Weed Free –
LAKEMAT PRO
Guaranteed!



With **LAKEMAT PRO** - Weeds Can't Grow

Safe • Quick • Green

LAKEMAT.COM

Made in
Michigan
Lacey, Inc.

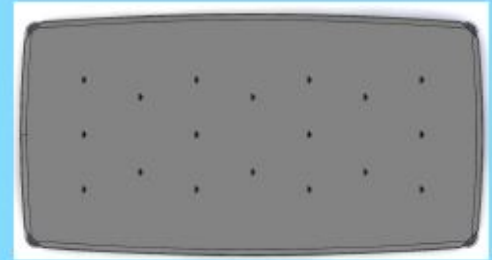
LAKEMAT PRO — Top View

Rigid, aluminized-steel frames insert into perimeter pockets.

Unique, patented framing system, creates dynamic tension – bowing frame outwards, holding the Mat fabric taut.

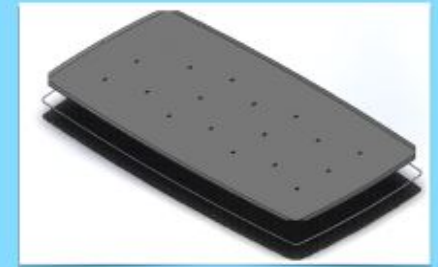
Gas- and water-permeable, our “non-woven” polypropylene fabric is designed specifically, for underwater and wetland geotextile applications.

Safe for fish, reptiles – micro-organisms and invertebrates.



LAKEMAT PRO — Exploded View

This drawing illustrates how our fabric is stretched over the frame. The darker “grid” beneath is added when a MuckMat Pro is used to stabilize soil, creating a firmer lakebed.



LAKEMAT PRO — Easy Installation

The LakeMat Pro framing system makes installation and moving very simple for one or two people.

Dry weight averages 60 lbs.

The weight of the frame holds the LakeMat Pro on the lake bottom.

Plastic stakes are also provided, but usually aren't necessary.



LAKEMAT PRO is **100% Guaranteed** effective. In most cases, four weeks is long enough to control all lake weeds beneath it. Testing results show treated area remains 95% weed-free for the remainder of the growing season.

Lakemat.com

Lacey Inc.

Caledonia, MI

(616) 293-9101

lakemat1@gmail.com



Friend or Foe?

Alberta

Chestermere Lake



**Weed
Harvesting**

Photo courtesy of Rocky View County

Hand removal – where possible

Alberta

Cutting & Pulling By Hand



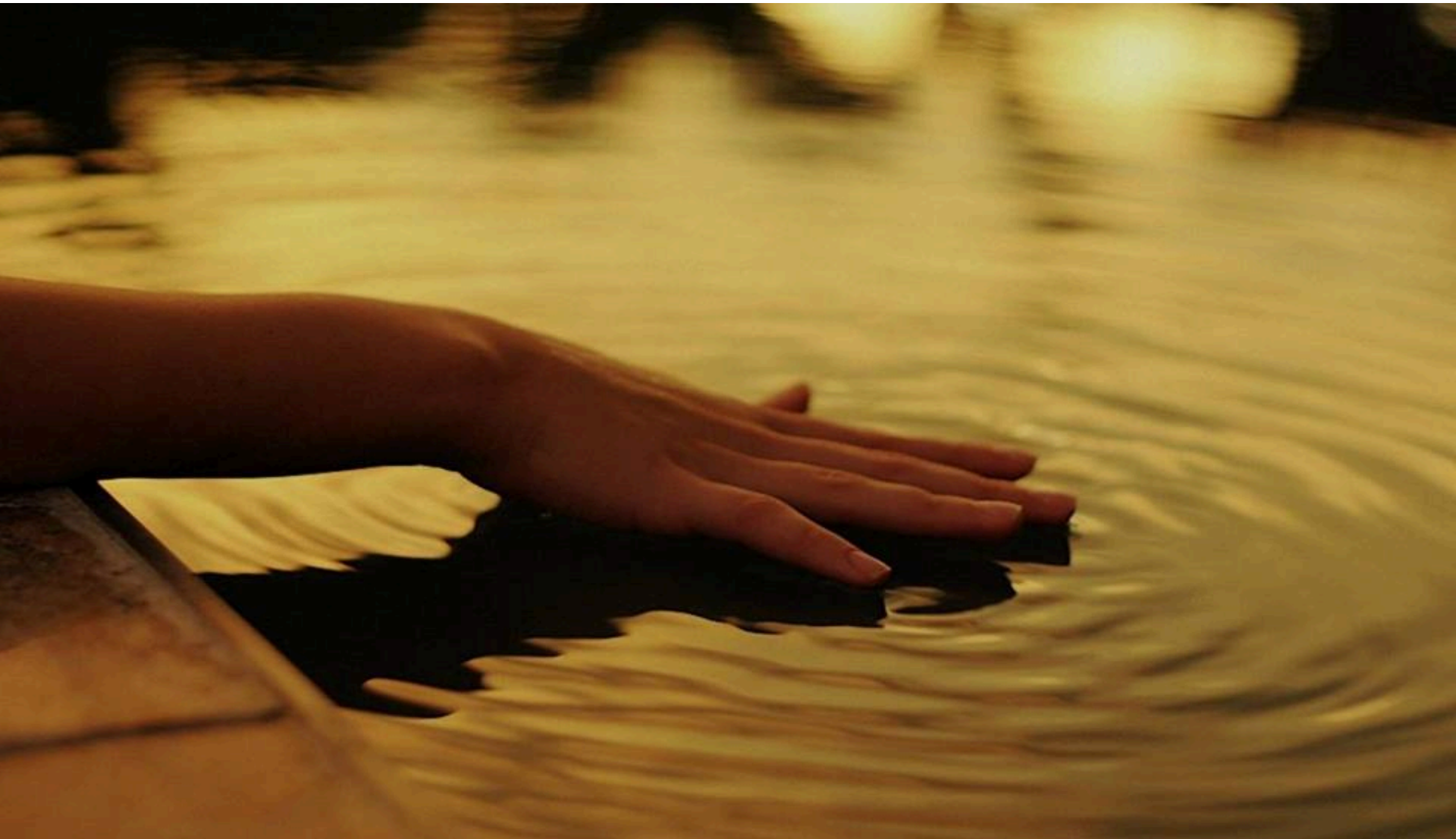
Photos courtesy of Lutheran Camp, Terry Rendflesh



Every little bit helps



Water Connects Us All





Namaste