



Lakewatch

LAKESMITH

*THE ALBERTA LAKE MANAGEMENT SOCIETY
VOLUNTEER LAKE MONITORING PROGRAM*

2014 Minnie Lake Report

LAKEWATCH IS MADE POSSIBLE WITH SUPPORT FROM:



Ce projet a été réalisé avec l'appui financier de :
This project was undertaken with the financial support of:



Environnement
Canada

Environment
Canada



Alberta Lake Management Society's LakeWatch Program

LakeWatch has several important objectives, one of which is to collect and interpret water quality data on Alberta Lakes. Equally important is educating lake users about their aquatic environment, encouraging public involvement in lake management, and facilitating cooperation and partnerships between government, industry, the scientific community, and lake users. LakeWatch Reports are designed to summarize basic lake data in understandable terms for a lay audience and are not meant to be a complete synopsis of information about specific lakes. Additional information is available for many lakes that have been included in LakeWatch and readers requiring more information are encouraged to seek those sources.

ALMS would like to thank all those who express interest in Alberta's aquatic environments and particularly those who have participated in the LakeWatch program. These people prove that ecological apathy can be overcome and give us hope that our water resources will not be the limiting factor in the health of our environment.

Historical data has been re-queried and summarized for the 2014 report. Data collected from 2014 has not yet been verified and outliers have been removed.

Acknowledgements

The LakeWatch program is made possible through the dedication of its volunteers. We would like to thank Garry and Nadine Kissel for their assistance with sampling Minnie Lake in 2014. We would also like to thank Jackson Woren, Brittany Kereliuk, and Kara MacAulay who were summer technicians with ALMS in 2014. Program Coordinator Bradley Peter was instrumental in planning and organizing the field program. Mike Bilyk was involved in the training aspects of the program. Lisa Reinbolt was responsible for data management. This report was prepared by Jackson Woren and Bradley Peter. Alberta Environment, the Beaver River Watershed Alliance (BRWA), the Lakeland Industry and Community Association (LICA), and Environment Canada, were major sponsors of the program.

MINNIE LAKE:

Minnie Lake (Figure 1) is a small lake located west of Bonnyville and north-east of Glendon within the Beaver River Watershed. The lake is 2 km long and 0.6 km wide, with a surface area of 0.84 km². Mean depth is 8.3 m and maximum depth is 21.45 m, though water levels have decreased since these values were calculated.

The shoreline of the lake hosts two municipal campsites, private cabins and recreational properties, agricultural land, and boreal forest.

Minnie Lake is spring-fed by the Beverly channel aquifer and surface runoff from precipitation. In 2006-2007 the lake experienced a winterkill, which decimated stocks of northern pike and yellow perch that previously supported a recreational fishery. Fish populations have not recovered to date.

In 2008, Canadian Natural Resources Ltd. had planned to drill 15 wells on 8 well pads less than 1.5 km from the lake, in addition to one well pad already present. Local residents expressed concern about the effects of drilling and other oil extraction activities on water quality in the lake and its aquifer, especially as one of the proposed wells would be directionally drilled to pump oil from directly underneath the lake. The Save Minnie Lake Committee was formed in 2008 after discussions with CNR representatives provided insufficient answers for community members. The Municipal District of Bonnyville has since rescinded the development approval permit for the well pad that would have allowed directional drilling.



Figure 1 – Minnie Lake, Alberta. Photo by Pauline Pozsonyi, 2011.



Figure 2 – Bathymetric map of Minnie Lake, Alberta (Trew 1986). Each contour represents 1 m elevation.

Minnie Lake is known to have a very unique change in water colour during the course of the open water season (Figure 3). This is known as ‘whitening events’ and occurs when tiny organisms called picoplankton photosynthesize and increase the pH around their body, causing calcium to precipitate and create a bright blue/green colour¹. This event is benign and typically occurs at the height of picoplankton biomass, but may or may not occur every year. Similar events have been observed at Crane and Marie Lake.



Figure 3 - Lake whitening event at Minnie Lake on July 14th. Photo taken by Kara MacAulay

WATER LEVELS:

There are many factors influencing water quantity. Some of these factors include the size of the lakes drainage basin, precipitation, evaporation, water consumption, ground water influences, and the efficiency of the outlet channel structure at removing water from the lake.

Water levels at Minnie Lake have continued to decline since measurements began in 1981 (Figure 4). In 1981, water levels were at a historical maximum of 554.5 meters above sea level (m asl). In 1986, the Minnie Lake Stabilization Plan was drawn up in response to water level declines observed in the early 1980’s. The decline was attributed to a combination of drought (which reduced aquifer replenishment by surface runoff) and municipal withdrawals by the village of Glendon, which had been withdrawing water directly from Minnie Lake since 1964. The plan suggested that a halt in municipal withdrawals be combined with a one-time addition of water (of approximately 10% of total water volume in Minnie Lake) from other sources to raise water level back to the desired level of 554.5 m asl. In 2013, however, water levels reached a new historical minimum of 551.174 m asl, three meters lower than in 1981.

¹ Ditttrich, M., Obst, M. 2004. Are picoplankton responsible for calcite precipitation in lakes? *Ambio*. Dec; 33(8): 559-564.

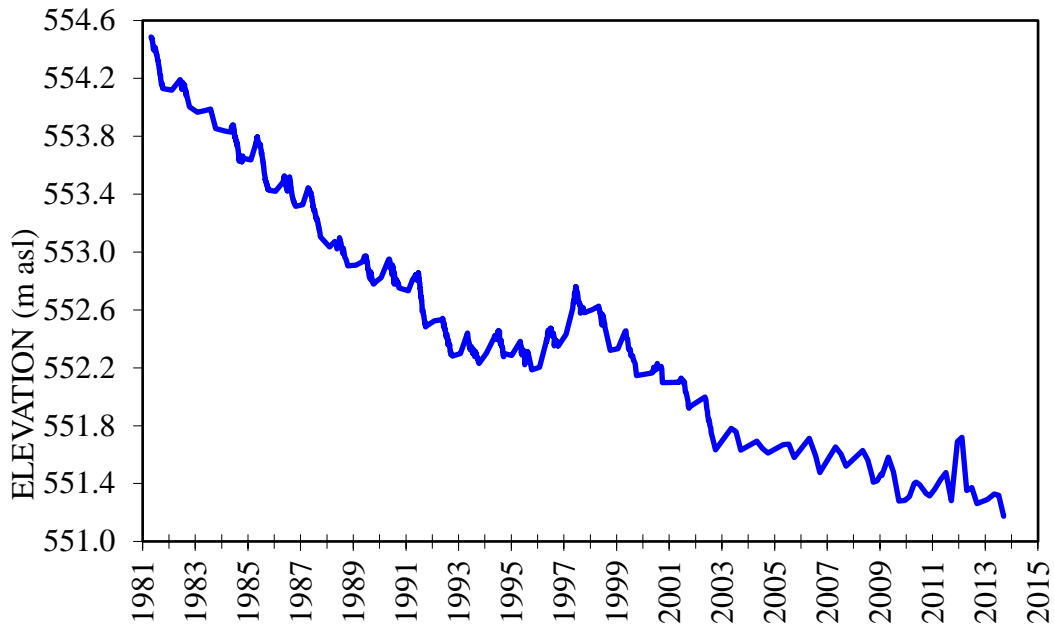


Figure 4 – Water levels from Minnie Lake in meters above sea level (m asl) obtained from Alberta Environment.

WATER CLARITY AND SECCHI DEPTH:

Water clarity is influenced by suspended materials, both living and dead, as well as dissolved colored compounds in the water column. During the melting of snow and ice in spring, lake water can become turbid (cloudy) from silt transported into the lake. Lake water usually clears in late spring but then becomes more turbid with increased algal growth as the summer progresses. The easiest and most widely used measure of lake water clarity is the Secchi disk depth.

Average Secchi disk depth measured at Minnie Lake during the summer of 2014 was 3.67 m (Table 1). This value falls well within the natural variation observed at Minnie Lake. Throughout the summer, patterns in Secchi disk depth changed drastically and appeared to be more correlated with the lake whitening event than with increased algal growth; thus, water clarity at Minnie Lake is likely determined by a combination of factors (Table 1). Throughout the summer Secchi disk depth ranged from an observed minimum of 0.65 m on July 14th to a maximum of 7.6 m on June 11th (Figure 5).

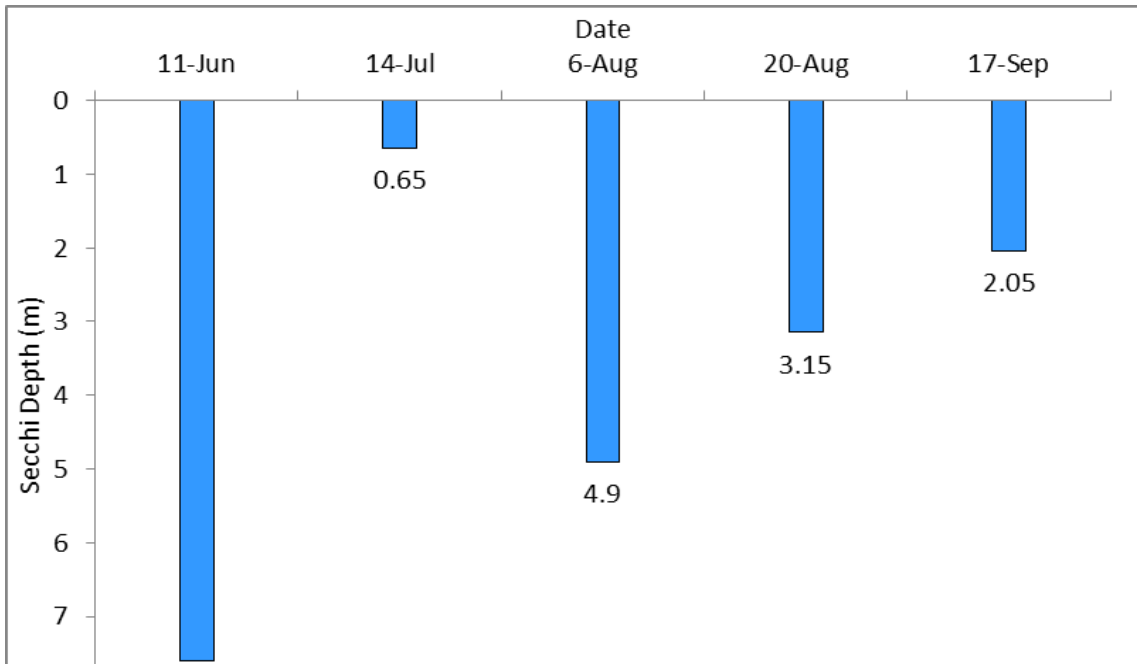


Figure 5 - Secchi depths recorded at the profile spot at Minnie Lake.

WATER TEMPERATURE AND DISSOLVED OXYGEN:

Water temperature and dissolved oxygen profiles in the water column can provide information on water quality and fish habitat. The depth of the thermocline is important in determining the depth to which dissolved oxygen from the surface can be mixed. Please refer to the end of this report for descriptions of technical terms.

Minnie Lake was stratified on each of the five sampling trips in 2014. Thermal stratification appeared as early as 4.0 m on June 11th and remained strong through to the last sampling trip in September (Figure 6a). Surface water temperatures varied greatly at Minnie Lake, measuring a minimum of 14.13 °C on September 17th to a maximum of 23.82 °C on August 6th. The presence of thermal stratification has important implications for nutrient cycling and Minnie Lake's dissolved oxygen concentrations.

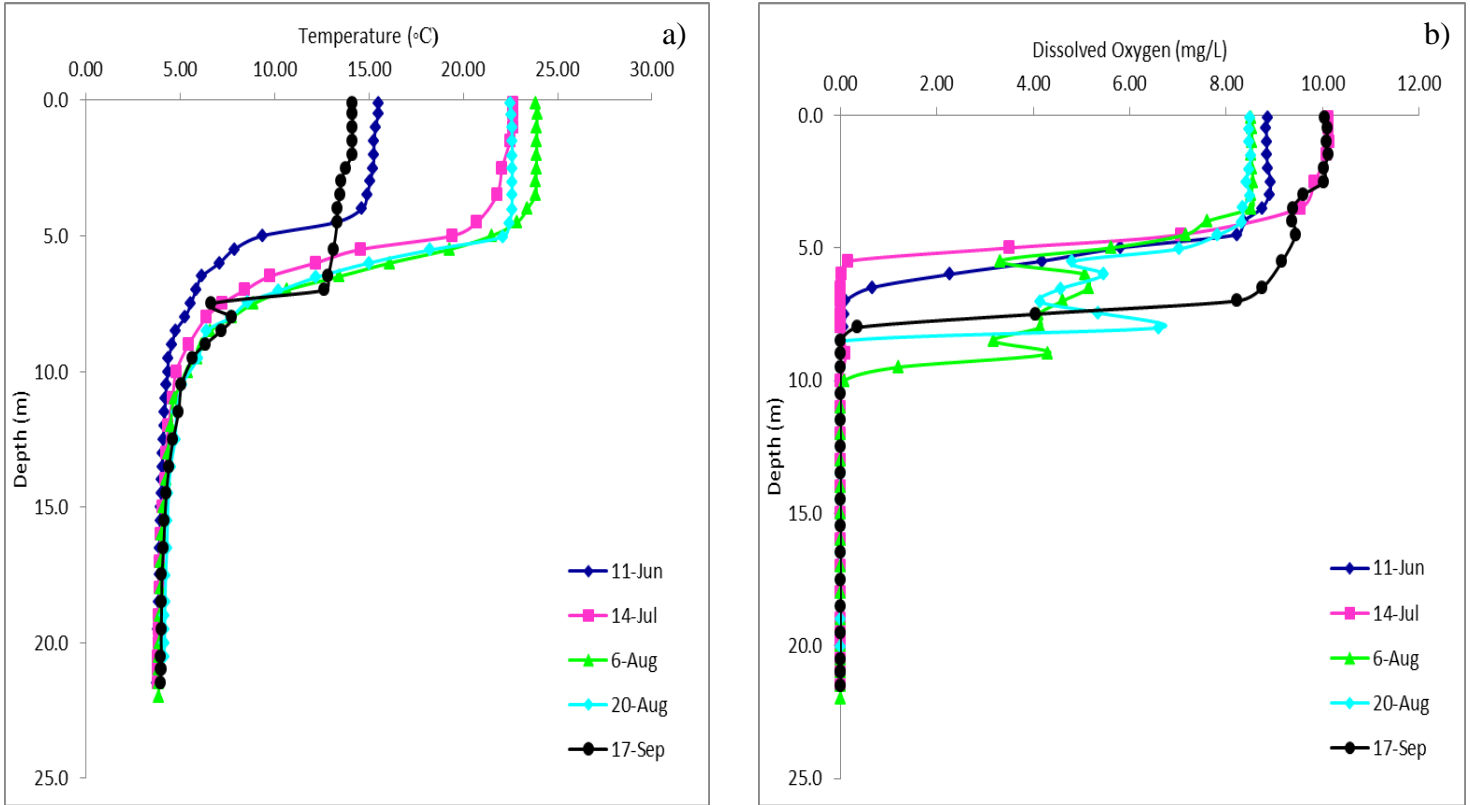


Figure 6 – a) Water temperature (°C) and b) dissolved oxygen concentration (mg/L) measured five times during the summer of 2014 at Minnie Lake.

High concentrations of dissolved oxygen were observed in the upper portion of the water column, fluctuating between 8.5 mg/L and 10.12 mg/L each sampling trip (Figure 6b). Below the thermocline, however, dissolved oxygen concentrations decreased rapidly, proceeding to anoxia as early as 4.50 m on July 14th. Decreased oxygen levels in the hypolimnion are due to a combination of factors including the decomposition of organic matter on the lakebed, which is an oxygen consuming process, and the separation from surface water by the thermocline. The absence of oxygen at the lakebed will contribute to the release of phosphorus from the sediments. Increases in dissolved oxygen levels between 5m and 10m depths can be explained by a metalimnetic bloom of picoplankton which may be responsible for the whitening event observed in 2014.

WATER CHEMISTRY:

ALMS measures a suite of water chemistry parameters. Phosphorus, nitrogen, and chlorophyll-a are important because they are indicators of eutrophication, or excess nutrients, which can lead to harmful algal/cyanobacteria blooms. One direct measure of harmful cyanobacteria blooms are Microcystins, a common group of toxins produced by cyanobacteria. See Table 1 for a complete list of parameters.

In 2014, average total phosphorus (TP) concentration measured 33.75 $\mu\text{g/L}$ (Figure 7, Table 1). This value falls on the low end of the eutrophic, or nutrient rich, classification. In addition, this value falls at the low end of the historical variation previously observed at Minnie Lake. Throughout the summer, TP concentrations ranged from a minimum of 24 $\mu\text{g/L}$ on September 17th to a maximum of 48 $\mu\text{g/L}$ on June 11th.

Average Total Kjeldahl nitrogen (TKN) measured 1460 $\mu\text{g/L}$ in 2014 (Figure 7, Table 1). This value falls into the hypereutrophic, or extremely productive, classification, and falls well within the historical variation observed at Minnie Lake. Concentrations were observed at a minimum of 1140 on July 14th and a maximum of 1660 on June 11th.

The original section of this report describing chlorophyll-a concentrations has been removed due to incorrect data values. The summary graph and table have been updated to include the correct values. April 11 2019.

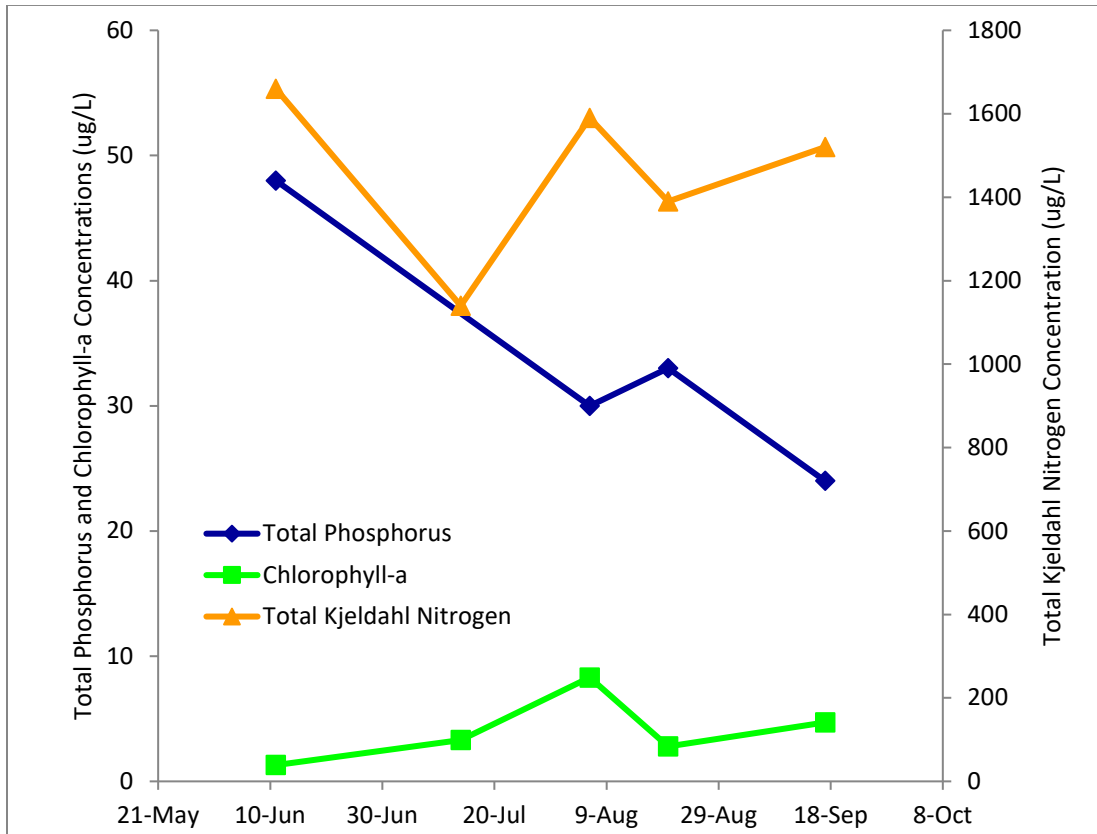


Figure 7 – Total phosphorus ($\mu\text{g/L}$), chlorophyll-a ($\mu\text{g/L}$), and total Kjeldahl nitrogen ($\mu\text{g/L}$) concentrations measured five times over the course of the summer at Minnie Lake in 2014.

Average pH at Minnie Lake during 2014 measured 8.78, well above neutral (Table 1). High alkalinity (352 mg/L CaCO_3) and high bicarbonate concentration (424.6 mg/L HCO_3) likely help to buffer Minnie Lake against changes to pH. Minnie Lake has a high conductivity (1360 $\mu\text{S/cm}$) due to high concentrations of dissolved ions such as magnesium (124 mg/L), sodium (103.3 mg/L), and sulphate (433.3 mg/L).

Metals were measured twice during the summer of 2014, and all values, with the exception of arsenic, fell within their respective guidelines (Table 2). High arsenic concentrations in surface waters in the Beaver River Watershed are not uncommon, and Minnie Lake has consistently shown results which exceed the Canadian Council for Ministers of the Environment (CCME) guidelines for the Protection of Aquatic Life. Quality control samples were collected by ALMS to ensure the accuracy of the arsenic values.

MICROCYSTIN:

Microcystins are toxins produced by cyanobacteria (blue-green algae) which, when ingested, can cause severe liver damage. Microcystins are produced by many species of cyanobacteria which are common to Alberta's Lakes, and are thought to be the one of the most common cyanobacteria toxins. In Alberta, recreational guidelines for microcystin are set at 20 µg/L.

Microcystin concentrations were low in Minnie Lake in 2014, never exceeding 0.1µg/L. On average, microcystin concentration measured 0.076 µg/L, well below the recreational guidelines of 20 µg/L. Note: caution should always be observed when recreating around cyanobacteria/blue-green algae.

INVASIVE SPECIES:

Quagga and Zebra mussels are invasive species which, if introduced to our lakes, will have significant negative ecological, economical, and recreational impacts. ALMS collects water samples which are analyzed for mussel veligers (juveniles) and monitors substrates for adult mussels. In order to prevent the spread of invasive mussels, always clean, drain, and dry your boat between lakes. To report mussel sightings or mussel-fouled boats, call the confidential Alberta hotline at 1-855-336-BOAT.

In 2014, no zebra or quagga mussels were detected in Minnie Lake.

Table 1 – Average Secchi disk depth and water chemistry values for Minnie Lake. Previous years averages are provided for comparison.

Parameter	1978	1979	1985	2008	2009	2010	2011	2012	2013	2014
TP (µg/L)	/	/	21	40	42.25	38.8	52.4	44.75	32.2	33.75
TDP (µg/L)	/	/	11	23.8	22.5	27	25.6	22	21.2	24.25
Chlorophyll- <i>a</i> (µg/L)	/	/	6	5.26	4.03	3.44	5.16	6.42	3.02	4.1*
Secchi depth (m)	/	/	/	4.5	2.19	4.7	3.85	3.81	3.32	3.67
TKN (µg/L)	/	/	1153	1504	1532.5	1608	1834	1655	1644	1460
NO ₂ and NO ₃ (µg/L)	/	/	6	21	7.625	12.1	13.9	11.38	2.5	38
NH ₃ (µg/L)	/	/	50	6.2	35.75	99.2	35	42.25	23.6	50.2
DOC (mg/L)	/	/	13.2	18.27	19.5	19.6	19	19.4	22.03	17.7
Ca (mg/L)	29	30	19.4	26.6	25.73	21.8	25.6	24.2	22.93	22.67
Mg (mg/L)	90	87	91	120.3	121.3	123.3	131.3	121	143.67	124
Na (mg/L)	62	61	68	94.23	96.6	97.2	95.8	95.63	98.9	3
K (mg/L)	11.7	9.4	13.1	23.3	19.07	18.57	18.5	19.87	21.03	20.17
SO ₄ ²⁻ (mg/L)	223	211	197	398.7	421	408.67	400	450.7	391	3
Cl ⁻ (mg/L)	3	3	4.4	7.13	6.93	7.47	7.3	7.6	6.8	7.5
CO ₃ (mg/L)	/	/	21	25.67	31.33	23	29	28	44.8	37.94
HCO ₃ (mg/L)	340	398	368	408.3	389.67	412	393.4	398	358.6	424.6
pH	8.9	8.6	8.6-8.9	8.627	8.8	8.65	8.77	8.73	8.88	8.78
Conductivity (µS/cm)	922	981	992	1340	1323.3	1370	1350	1367.5	1418	1360
Hardness (mg/L)	442	435	422	561.67	563.67	562.3	605	558.3	648.67	567
TDS (mg/L)	614	611	595	897.3	914	902.67	902	943.3	906	3
Microcystin (µg/L)	/	/	/	0.1275	0.1125	0.076	0.11	0.135		0.076
Total Alkalinity (mg/L CaCO ₃)	324	316	338	378.3	371.67	376	371.2	373	369	352

Note: TP = total phosphorus, TDP = total dissolved phosphorus, Chl-*a* = chlorophyll-*a*, TKN = total Kjeldahl nitrogen. NO₂₊₃ = nitrate+nitrite, NH₃ = ammonia, DOC = dissolved organic carbon, Ca = calcium, Mg = magnesium, Na = sodium, K = potassium, SO₄ = sulphate, Cl = chloride, CO₃ = carbonate, HCO₃ = bicarbonate TDS = total dissolved solids. A forward slash (/) indicates an absence of data.

*Value was correct to 4.1 on April 11 2019.

Table 2 - Concentrations of metals measured at Minnie Lake on August 6th and September 17th 2013. Values shown for 2014 are an average of those dates. The CCME heavy metal Guidelines for the Protection of Freshwater Aquatic Life (unless otherwise indicated) are presented for reference.

Metals (Total Recoverable)	2008	2009	2010	2011	2013	2014	Guidelines
Aluminum µg/L	13.7	13	14.26	14.84	22.55	17.4	100 ^a
Antimony µg/L	0.382	0.375	0.392	0.3725	0.3685	0.349	6 ^c
Arsenic µg/L	9.15	9.33	9.56	9.07	9.83	9.875	5
Barium µg/L	20.6	18.7	18.5	18.25	12.65	12.35	1000 ^e
Beryllium µg/L	<0.003	<0.003	0.005	0.0015	0.0057	0.004	100 ^{d,f}
Bismuth µg/L	0.0073	0.0057	0.00385	0.0005	0.00795	0.0005	/
Boron µg/L	162	205.5	159.5	204.5	186.5	185	5000 ^{ef}
Cadmium µg/L	0.0124	0.0187	0.01725	0.01385	0.0036	0.001865	0.085 ^b
Chromium µg/L	0.494	0.394	0.169	0.2575	0.3065	0.292	/
Cobalt µg/L	0.111	0.092	0.0972	0.07485	0.09775	0.0687	1000 ^f
Copper µg/L	0.332	2.09	0.6815	1.0825	1.3	0.9025	4 ^c
Iron µg/L	10.9	43.6	16.1	8.9	29.3	16.85	300
Lead µg/L	0.0274	0.0544	0.0851	0.03275	0.0617	0.01115	7 ^c
Lithium µg/L	74.1	101.5	84.05	106.5	93.95	92.95	2500 ^g
Manganese µg/L	8.61	6.36	5.905	15.75	4.515	6.78	200 ^g
Molybdenum µg/L	0.799	0.727	0.746	0.735	0.6685	0.5695	73 ^d
Nickel µg/L	0.271	0.665	0.3805	0.15125	0.5225	0.3475	150 ^c
Selenium µg/L	0.2	0.292	0.232	0.228	0.089	0.123	1
Silver µg/L	0.0022	0.0082	0.0029	0.00025	0.01125	0.001	0.1
Strontium µg/L	74	69.7	55	73.25	49.7	58.7	/
Thallium µg/L	0.0026	0.0029	0.00555	0.000275	0.0015	0.00085	0.8
Thorium µg/L	0.0628	0.00215	0.01825	0.01015	0.0321	0.011375	/
Tin µg/L	0.0308	<0.03	0.015	0.015	0.015	0.00825	/
Titanium µg/L	0.667	0.691	1.0995	0.686	1.1145	0.685	/
Uranium µg/L	2.3	2.08	2.16	2.14	2.1	2.165	100 ^e
Vanadium µg/L	1.31	1.22	1.165	1.06	1.035	1.04	100 ^{f,g}
Zinc µg/L	1.58	1.34	1.165	1.48	1.465	1.58	30

Values represent means of total recoverable metal concentrations.

^a Based on pH ≥ 6.5; calcium ion concentrations [Ca⁺²] ≥ 4 mg/L; and dissolved organic carbon concentration [DOC] ≥ 2 mg/L.

^b Based on water Hardness of 300 mg/L (as CaCO₃)

^c Based on water hardness > 180mg/L (as CaCO₃)

^d CCME interim value.

^e Based on Canadian Drinking Water Quality guideline values.

^f Based on CCME Guidelines for Agricultural use (Livestock Watering).

^g Based on CCME Guidelines for Agricultural Use (Irrigation).

A forward slash (/) indicates an absence of data or guidelines.

MINNIE LAKE PHOTOS:



Photo 1: Cattle drinking from the north-west shore of Minnie Lake. Photo by Pauline Pozsonyi, 2011.



Photo 2: Great Blue Heron (*Ardea herodias*). Photo by Pauline Pozsonyi, 2011.



Photo 3: Whitening event at Minnie Lake in July, 2014. Photo by Kara MacAulay, 2014.

A BRIEF INTRODUCTION TO LIMNOLOGY

INDICATORS OF WATER QUALITY:

Water samples are collected in LakeWatch to determine the chemical characteristics that characterize general water quality. Though not all encompassing, the variables collected in LakeWatch are sensitive to human activities in watersheds that can cause degraded water quality. For example, nutrients such as phosphorus and nitrogen are important determinants of lake productivity. The concentrations of these nutrients in a lake are impacted (typically elevated) by land use changes such as increased crop production or livestock grazing. Elevated nutrient concentrations can cause increases in undesirable algae blooms resulting in low dissolved oxygen concentrations, degraded habitat for fish and noxious smells. A large increase in nutrients over time may also indicate sewage inputs which in turn may result in other human health concerns associated with bacteria or the protozoan *Cryptosporidium*.

TEMPERATURE AND MIXING:

Water temperature in a lake dictates the behavior of many chemical parameters responsible for water quality. Heat is transferred to a lake at its surface and slowly moves downward depending on water circulation in the lake. Lakes with a large surface area or a small volume tend to have greater mixing due to wind. In deeper lakes, circulation is not strong enough to move warm water to depths typically greater than 4 or 5 m and as a result cooler denser water remains at the bottom of the lake.

As the difference in temperature between warm surface and cold deeper water increases, two distinct layers are formed. Limnologists call these layers of water the **epilimnion** at the surface and the **hypolimnion** at the bottom. The layers are separated by a transition layer known as the **metalimnion** which contains the effective wall separating top and bottom waters called a **thermocline**. A thermocline typically occurs when water temperature changes by more than one degree within one meter depth. The hypolimnion and epilimnion do not mix, nor do elements such as oxygen supplied at the surface move downward into the hypolimnion. In the fall, surface waters begin to cool and eventually reach the same temperature as hypolimnetic water. At this point the water mixes from top

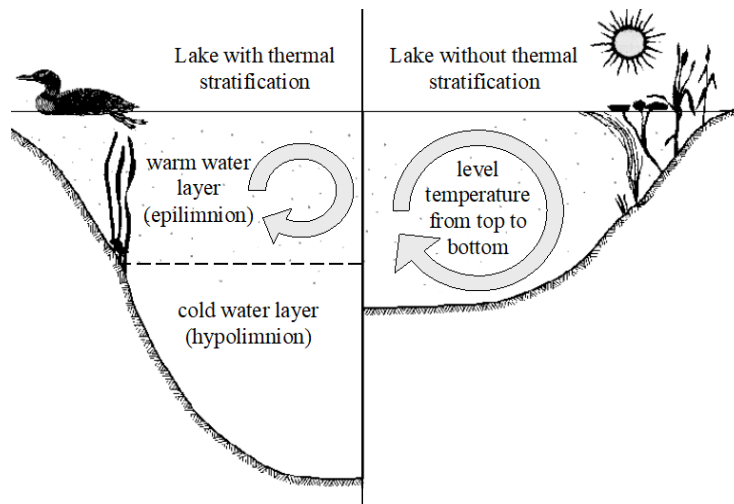


Figure A: Difference in the circulation of the water column depending on thermal stratification.

to bottom in what is often called a **turnover** event. Surface water cools further as ice forms and again a thermocline develops this time with 4° C water at the bottom and near 0° C water on the top.

In spring another turnover event occurs when surface waters warm to 4° C. Lakes with this mixing pattern of two stratification periods and two turnover events are called **dimictic** lakes. In shallower lakes, the water column may mix from top to bottom most of the ice-free season with occasional stratification during periods of calm warm conditions. Lakes that mix frequently are termed **polymictic** lakes. In our cold climate, many shallow lakes are **cold monomictic** meaning a thermocline develops every winter, there is one turnover event in spring but the remainder of the ice free season the lake is polymictic.

DISSOLVED OXYGEN:

Oxygen enters a lake at the lake surface and throughout the water column when produced by photosynthesizing plants, including algae, in the lake. Oxygen is consumed within the lake by respiration of living organisms and decomposition of organic material in the lake sediments. In lakes that stratify (see temperature above), oxygen that dissolves into the lake at the surface cannot mix downward into the hypolimnion. At the same time oxygen is depleted in the hypolimnion by decomposition. The result is that the hypolimnion of a lake can become **anoxic**, meaning it contains little or no dissolved oxygen. When a lake is frozen, the entire water column can become anoxic because the surface is sealed off from the atmosphere. Winter anoxic conditions can result in a fish-kill which is particularly common during harsh winters with extended ice-cover. Alberta Surface Water Quality Guidelines suggest dissolved oxygen concentrations (in the epilimnion) must not decline below 5 mg•L⁻¹ and should not average less than 6.5 mg•L⁻¹ over a seven-day period. However, the guidelines also require that dissolved oxygen concentrations remain above 9.5 mg•L⁻¹ in areas where early life stages of aquatic biota, particularly fish, are present.

GENERAL WATER CHEMISTRY:

Water in lakes always contains substances that have been transported by rain and snow or have entered the lake in groundwater and inflow streams. These substances may be dissolved in the water or suspended as particles. Some of these substances are familiar minerals, such as sodium and chloride, which when combined form table salt, but when dissolved in water separate into the two electrically charged components called **ions**. Most dissolved substances in water are in ionic forms and are held in solution due to the polar nature of the water molecule. **Hydrophobic** (water-fearing) compounds such as oils contain little or no ionic character, are non-polar and for this reason do not readily dissolve in water. Although hydrophobic compounds do not readily dissolve, they can still be transported to lakes by flowing water. Within individual lakes, ion concentrations vary from year to year depending on the amount and mineral content of the water entering the lake. This mineral content can be influenced by the amount of precipitation

and other climate variables as well as human activities such as fertilizer and road salt application.

PHOSPHORUS AND NITROGEN:

Phosphorus and nitrogen are important nutrients limiting the growth of algae in Alberta lakes. While nitrogen usually limits agricultural plants, phosphorus is usually in shortest supply in lakes. Even a slight increase of phosphorus in a lake can, given the right conditions, promote algal blooms causing the water to turn green in the summer and impair recreational uses. When pollution originating from livestock manure and human sewage enters lakes not only are the concentrations of phosphorus and nitrogen increased but nitrogen can become a limiting nutrient which is thought to cause blooms of toxic algae belonging to the cyanobacteria. Not all cyanobacteria are toxic, however, the blooms can form decomposing mats that smell and impair dissolved oxygen concentrations in the lake.

CHLOROPHYLL-A:

Chlorophyll *a* is a photosynthetic pigment that green plants, including algae, possess enabling them to convert the sun's energy to living material. Chlorophyll *a* can be easily extracted from algae in the laboratory. Consequently, chlorophyll *a* is a good estimate of the amount of algae in the water. Some highly productive lakes are dominated by larger aquatic plants rather than suspended algae. In these lakes, chlorophyll *a* and nutrient values taken from water samples do not include productivity from large aquatic plants. The result, in lakes like Chestermere which are dominated by larger plants known as macrophytes, can be a lower trophic state than if macrophyte biomass was included. Unfortunately, the productivity and nutrient cycling contributions of macrophytes are difficult to sample accurately and are therefore not typically included in trophic state indices.

SECCHI DISK TRANSPARENCY :

Lakes that are clear are more attractive for recreation, whereas those that are turbid or murky are considered by lake users to have poor water quality. A measure of the transparency or clarity of the water is performed with a Secchi disk with an alternating black and white pattern. To measure the clarity of the water, the Secchi disk is lowered down into the water column and the depth where the disk disappears is recorded. The Secchi depth in lakes with a lot of algal growth will be small while the Secchi depth in lakes with little algal growth can be very deep. However, low Secchi depths are not caused by algal growth alone. High concentrations of suspended sediments, particularly fine clays or glacial till, are common in plains or mountain reservoirs of Alberta. Mountain reservoirs may have exceedingly low Secchi depths despite low algal growth and nutrient concentrations.

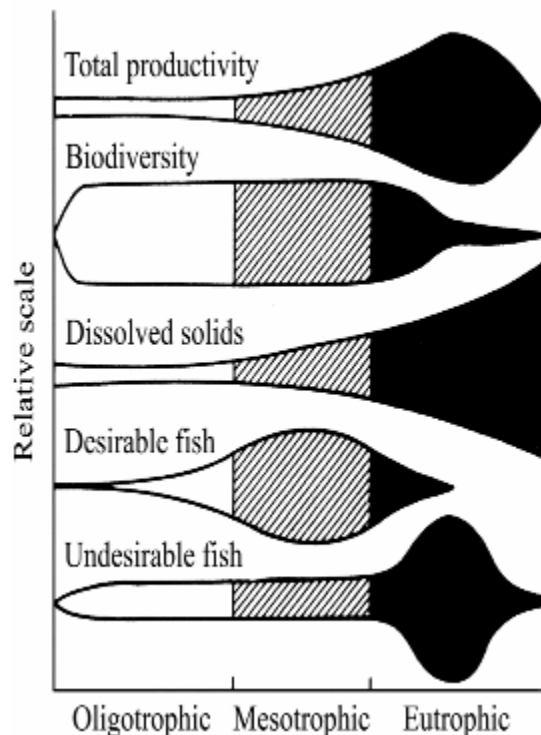
The euphotic zone or the maximum depth that light can penetrate into the water column for actively growing plants is calculated as twice the Secchi depth. Murky waters, with shallow Secchi depths, can prevent aquatic plants from growing on the lake bottom.

Conversely, aquatic plants can ensure lakes have clear water by reducing shoreline erosion and stabilizing lake bottom sediments. In Alberta, many lakes are shallow and bottom sediments contain high concentrations of nutrients. Without aquatic plants, water quality may decline in these lakes due to murky, sediment laden water and excessive algal blooms. Maintaining aquatic plants in certain areas of a lake is often essential for ensuring good water clarity and a healthy lake as many organisms, like aquatic invertebrates and insects, depend on aquatic plants for food and shelter.

TROPHIC STATE:

Trophic state is classification of lakes into four categories of fertility and is a useful index for rating and comparing lakes. From low to high nutrient and algal biomass (as chlorophyll) concentrations, the trophic states are; **oligotrophic, mesotrophic, eutrophic** and **hypereutrophic** (Table 2).

A majority of lakes in Alberta contain naturally high levels of chlorophyll *a* (8 to 25 µg/L) due to our deep fertile soils. These lakes are usually considered fertile and are termed eutrophic. The nutrient and algal biomass concentrations that define these categories are shown in the following table, a figure of Alberta lakes compared by trophic state can be found on the ALMS website.



Oligotrophic Mesotrophic Eutrophic
 Figure B: Suggested changes in various lake characteristics with eutrophication. From “Ecological Effects of Wastewater”, 1980.

Table A - Trophic status classification based on lake water characteristics.

Trophic state	Total Phosphorus (µg•L ⁻¹)	Total Nitrogen (µg•L ⁻¹)	Chlorophyll <i>a</i> (µg•L ⁻¹)	Secchi Depth (m)
Oligotrophic	< 10	< 350	< 3.5	> 4
Mesotrophic	10 – 30	350 - 650	3.5 - 9	4 - 2
Eutrophic	30 – 100	650 - 1200	9 - 25	2 - 1
Hypereutrophic	> 100	> 1200	> 25	< 1

Note: These values are from a detailed study of global lakes reported in Nurnberg 1996. Alberta Environment uses slightly different values for TP and CHL based on those of the OECD reported by Vollenweider (1982). The AENV and OECD cutoffs for TP are 10, 35

and 100; for CHL are 3, 8 and 25. AENV does not have TN or Secchi depth criteria. The corresponding OECD exists for Secchi depth and the cutoffs are 6, 3 and 1.5 m.