



Wabamun Lake Watershed Management Plan – A Story of Collaboration

2022 ALMS WORKSHOP - SEPT 28/2022

SUE STYLES

PURPOSE



Share our local watershed stewardship experience in hopes it will help others advance their watershed journey/work



Honor stewardship work and all those who participate in it

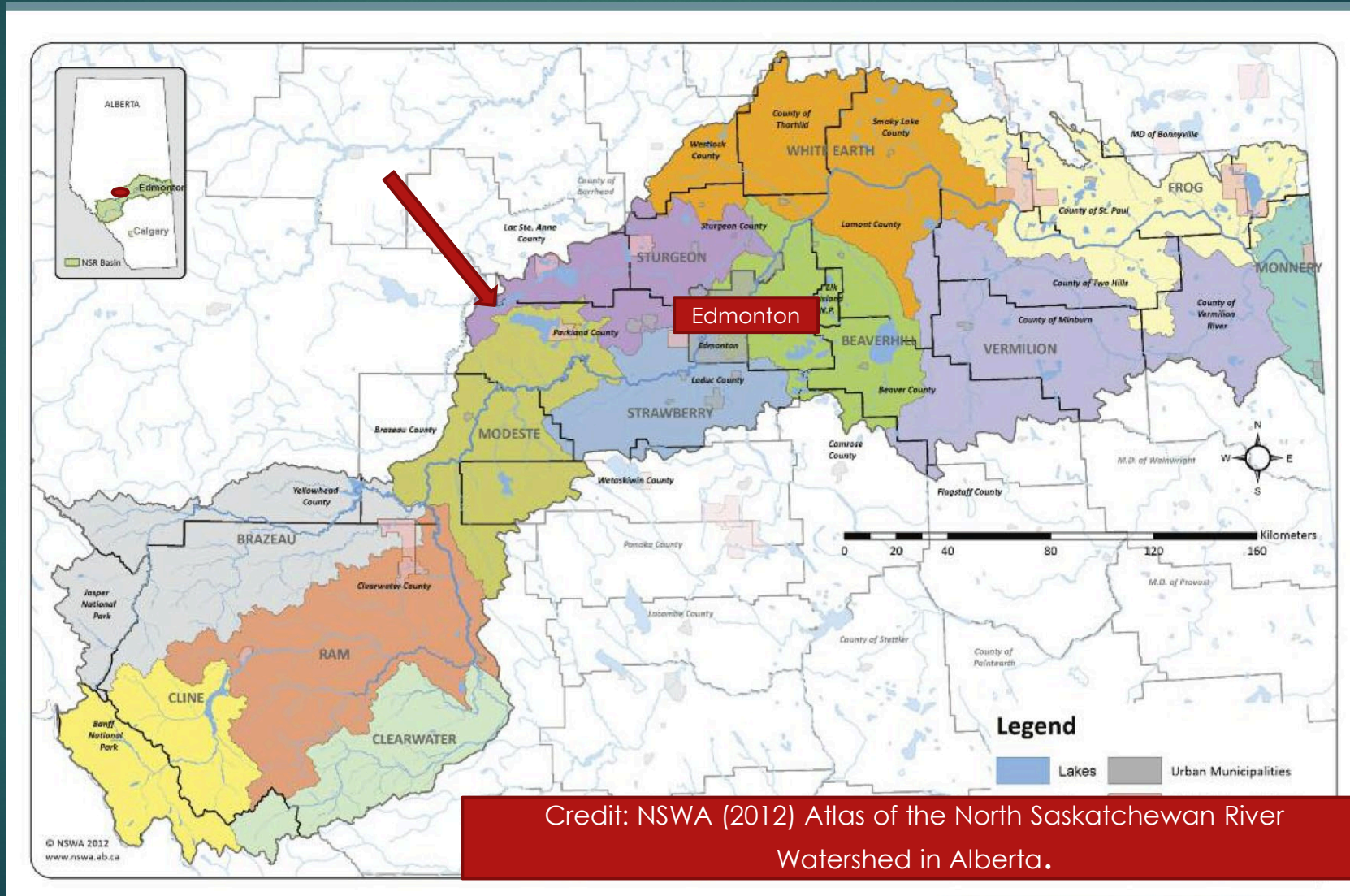
Outline

- ▶ Past
 - ▶ Geographic/Background Context
- ▶ Present
- ▶ Future

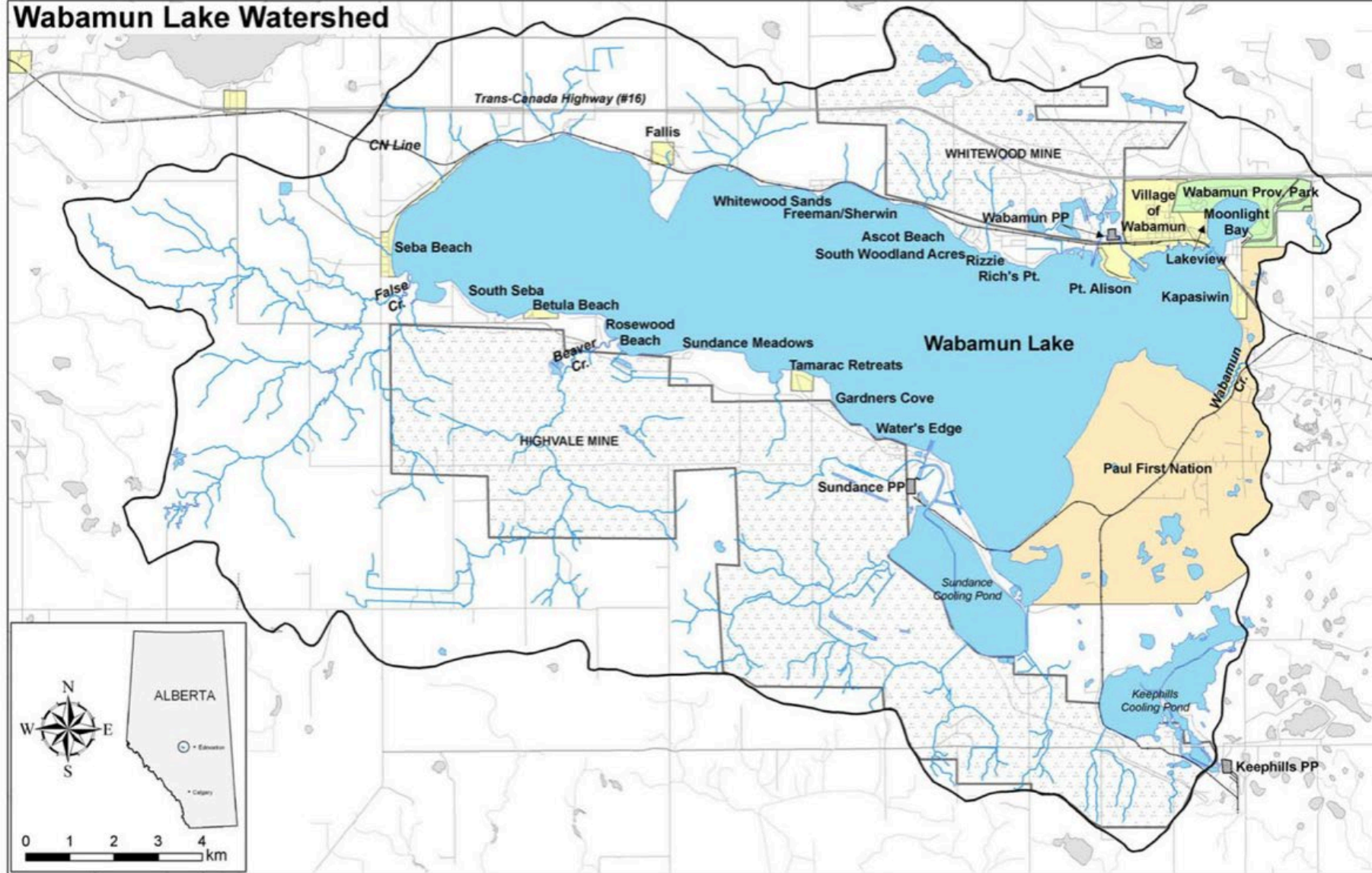
WLWMP – Wabamun Lake Watershed Management Plan

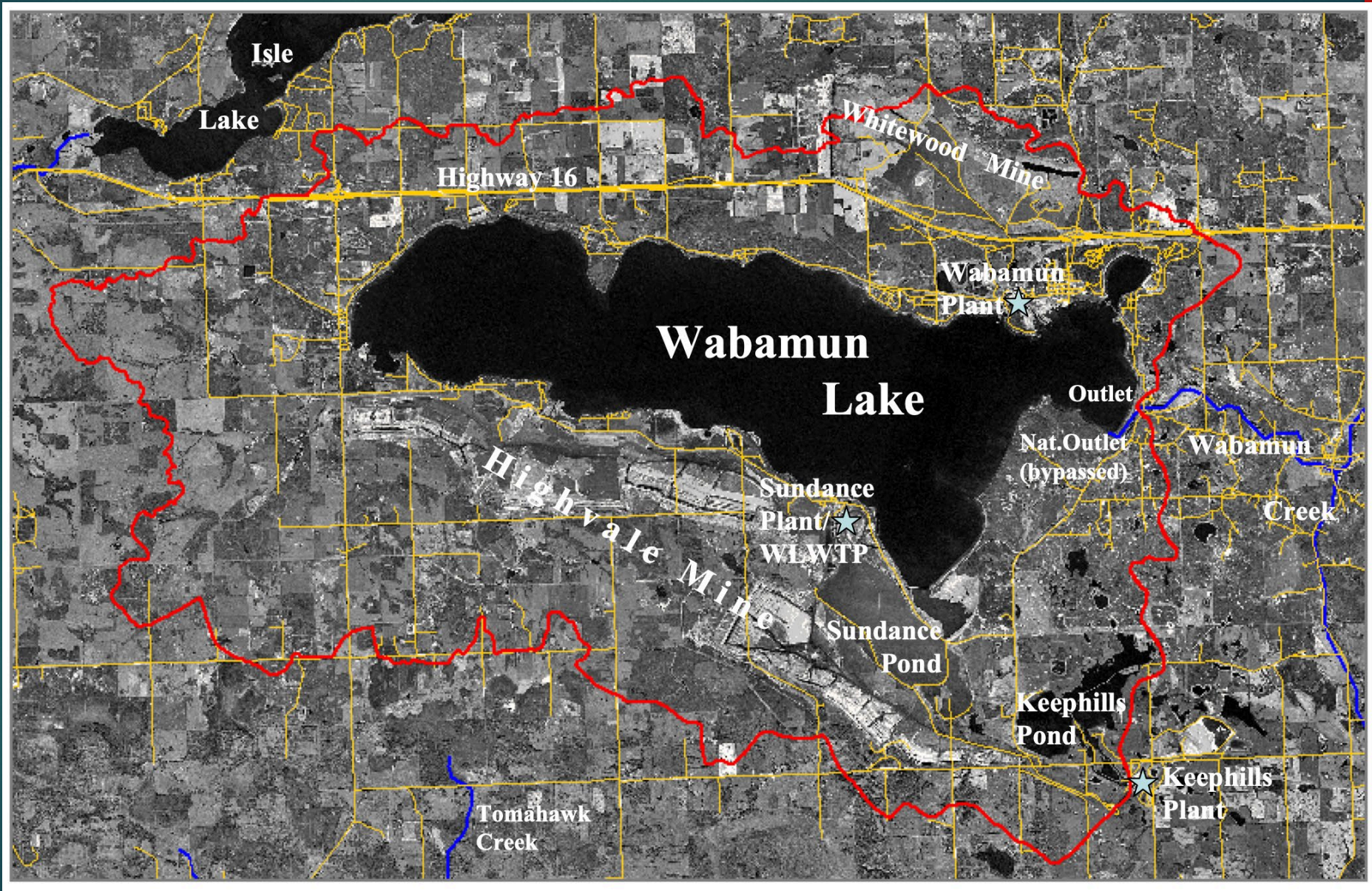


North Saskatchewan River Watershed Modeste Subwatershed > Wabamun Lake

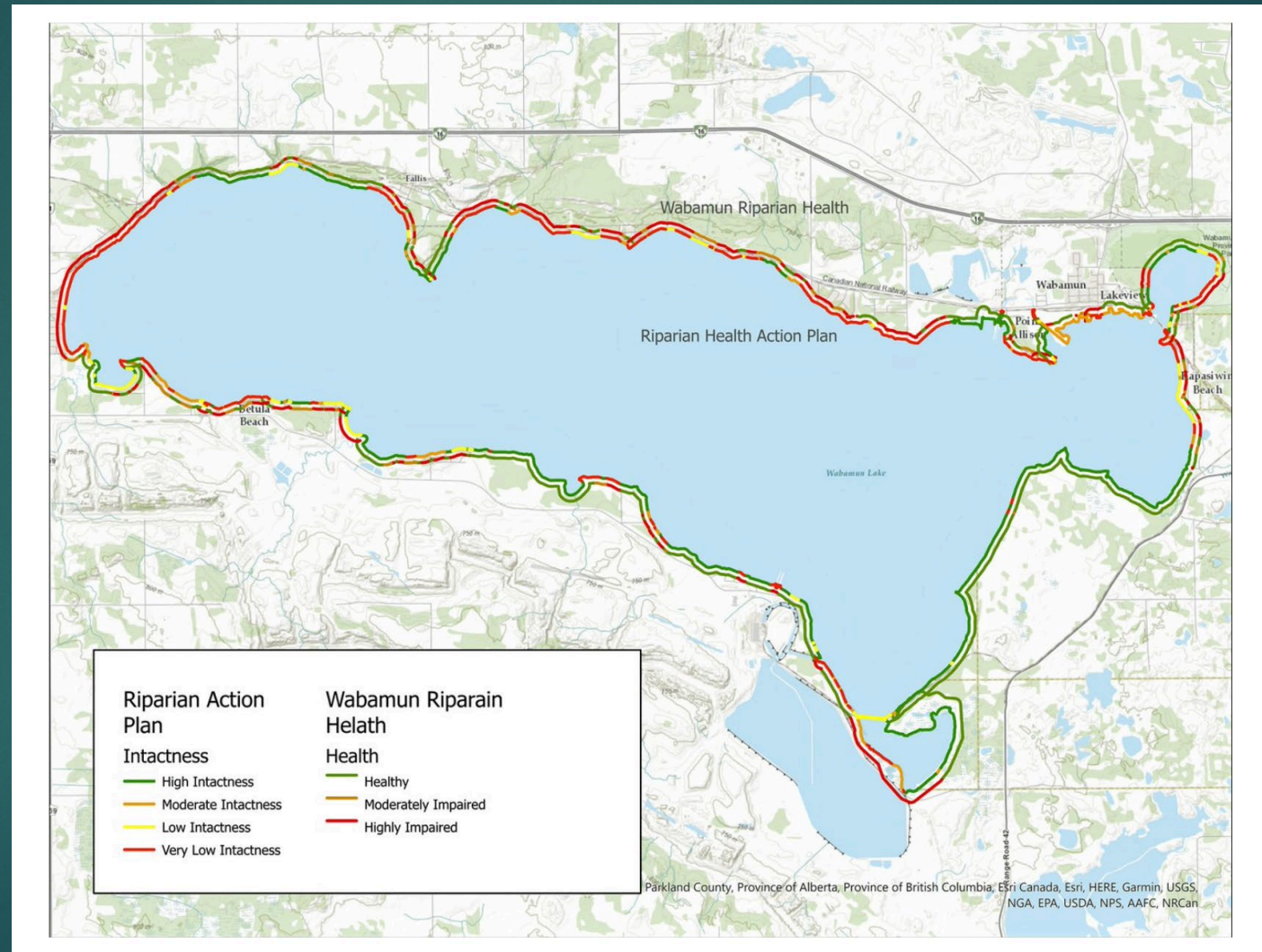


Wabamun Lake Watershed





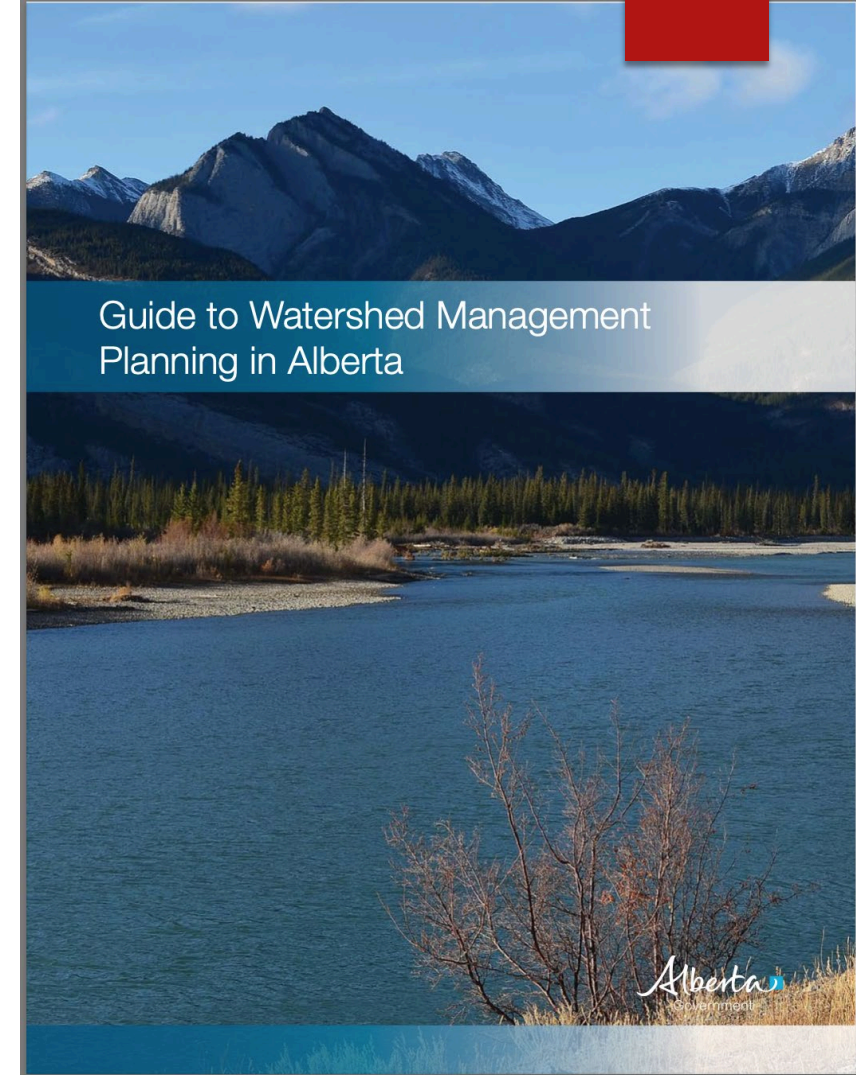
Riparian Assessment (2014/2021)



WLWMP timeline

- ▶ **1985** – 1st Lake Wabamun Management Plan completed
- ▶ **2004** - Dr. D Schindler [*Lake Wabamun: A Review of Scientific Studies and Environmental Impacts \(PDF\)*](#).
- ▶ **2005** (August) – CN trail derailment at Wabamun Lake
- ▶ **2006** - Wabamun Watershed Management Council (WWMC) is formed
- ▶ **2010** – WWMC incorporated in Alberta
- ▶ **2018** - Wabamun Lake Watershed Management Plan Steering Committee
- ▶ **2020 – Wabamun Lake Watershed Management Plan is released**

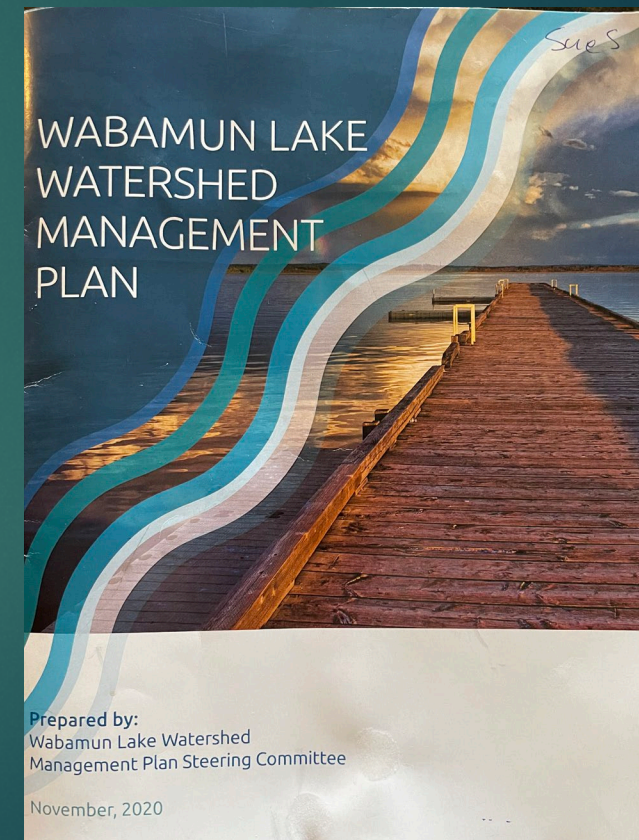
We now have a multi-stakeholder roadmap for managing lake health!



Wabamun Lake Watershed Management Plan

Main Objectives

- ▶ 1. Good Water Quality
- ▶ 2. Healthy Aquatic Ecosystems and Biodiversity
- ▶ 3. Wise Land Use
- ▶ 4. Engaged Stewardship



Highest risks for Wabamun Lake Watershed



Invasive Species



Blue-green
algae blooms



Cumulative impacts from
development and climate
change



Nutrient overload from residential
development, loss of riparian filter
function, and agricultural intensification

Priority WMP Focus Areas



Maintaining a collaborative WMP
implementation governance structure via a
representative Steering Committee



Continuing to build on educational activities with
an initial focus on invasive species, riparian health
and agricultural beneficial practices



Setting up a robust water
quality monitoring program
that discerns trends and informs
decision-makers



Restoring
shoreline riparian
function



Continuing to align municipal policies, plans
and processes (e.g., fertilizer and pesticide
bylaws, septic bylaws, building and development
requirements) that promote watershed health

Collaboration

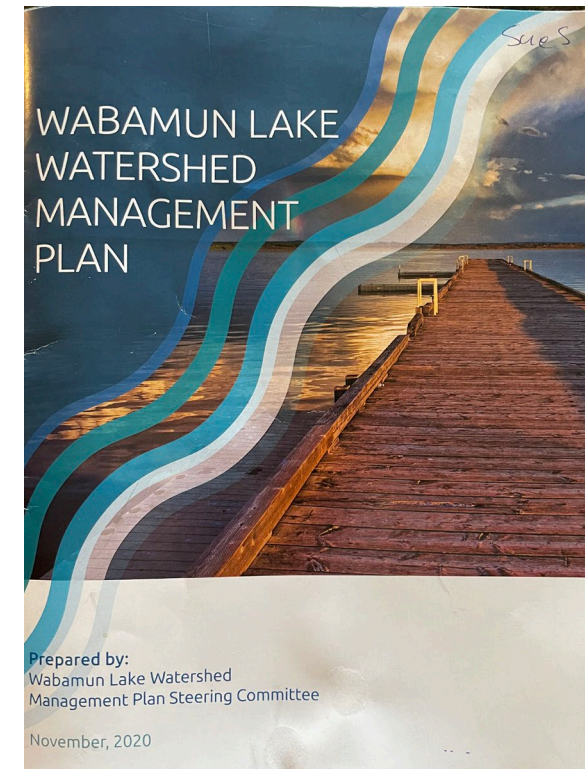
-in both the **development and implementation** of the plan

WLWMP Implementation Steering Committee made up of representatives from

- ▶ Alberta Environment and Parks
- ▶ NSWA
- ▶ ALMS
- ▶ Parkland County
- ▶ Summer Villages (Betula Beach, Lakeview, Kapasiwin, Seba Beach, Point Alison)
- ▶ TransAlta
- ▶ WWMC

Wabamun Watershed a Plan for All Seasons - Video

– about the collaborative effort that has gone into producing the plan and how that same effort will be essential to enacting the plan.



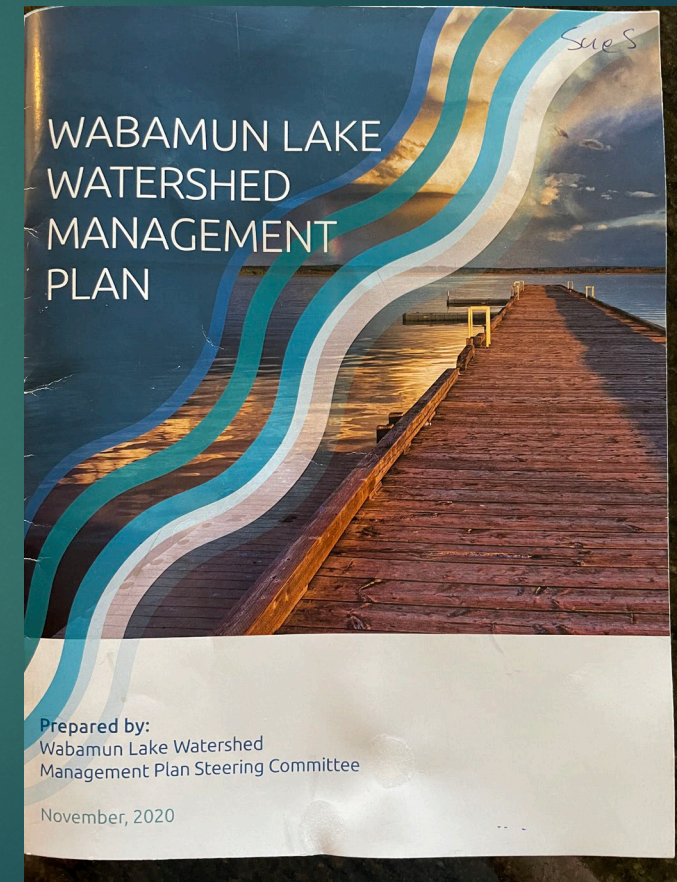
Future

Implementation of the WLWMP

- ▶ Sustainable WWMC organization
- ▶ Strengthen and expand collaborative partnerships; Indigenous engagement
- ▶ Build capacity – human resources, funding resources

Conclusion:

The WLWMP is the
past, present and future.



Thank you!

Questions?

Sue Styles - info@wwmc.ca

www.wwmc.ca

